

(Fairmont)
118°24'
34°42'
34°36'
118°24'
(Le Brun)

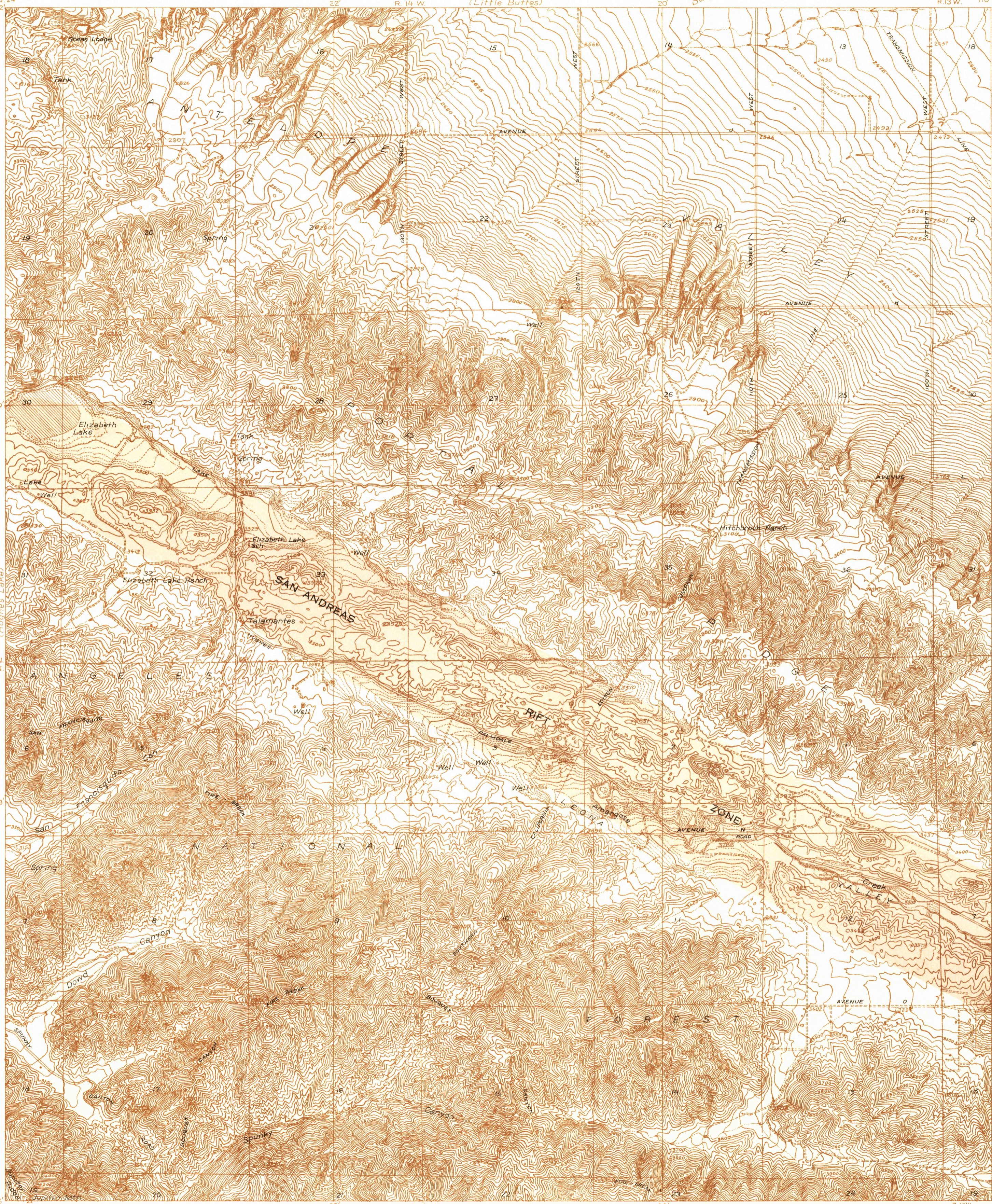
DEPARTMENT OF THE INTERIOR
U. S. GEOLOGICAL SURVEY

LOS ANGELES COUNTY, CALIFORNIA
BOARD OF SUPERVISORS
HERBERT C. LEGG, CHAIRMAN
ALFRED JONES, COUNTY SURVEYOR

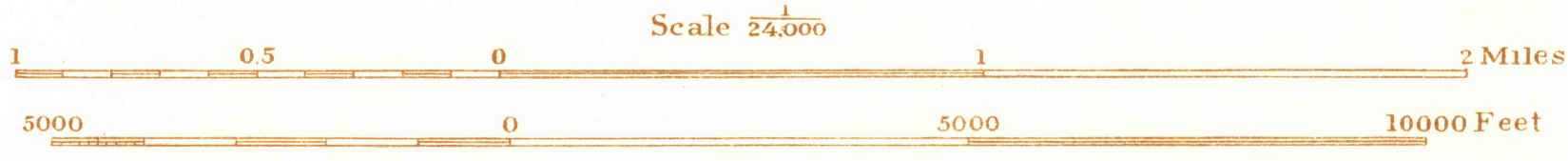
Advance sheet
Subject to correction

CALIFORNIA
(LOS ANGELES COUNTY)
LAKE QUADRANGLE

(Esperanza School)
118°18'
34°42'
34°36'
118°18'
(Red Rover)

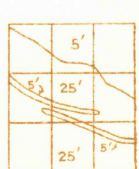


H. H. Hodgeson, Division Engineer
Topography by A. Fankhauser
Control by U. S. Geological Survey
Surveyed in 1931-1932



Contour intervals 5 and 25 feet (see diagram)
Datum is mean sea level

USGS
Historical File
Topographic Division



Polyconic projection, North American datum

LAKE, CALIF.