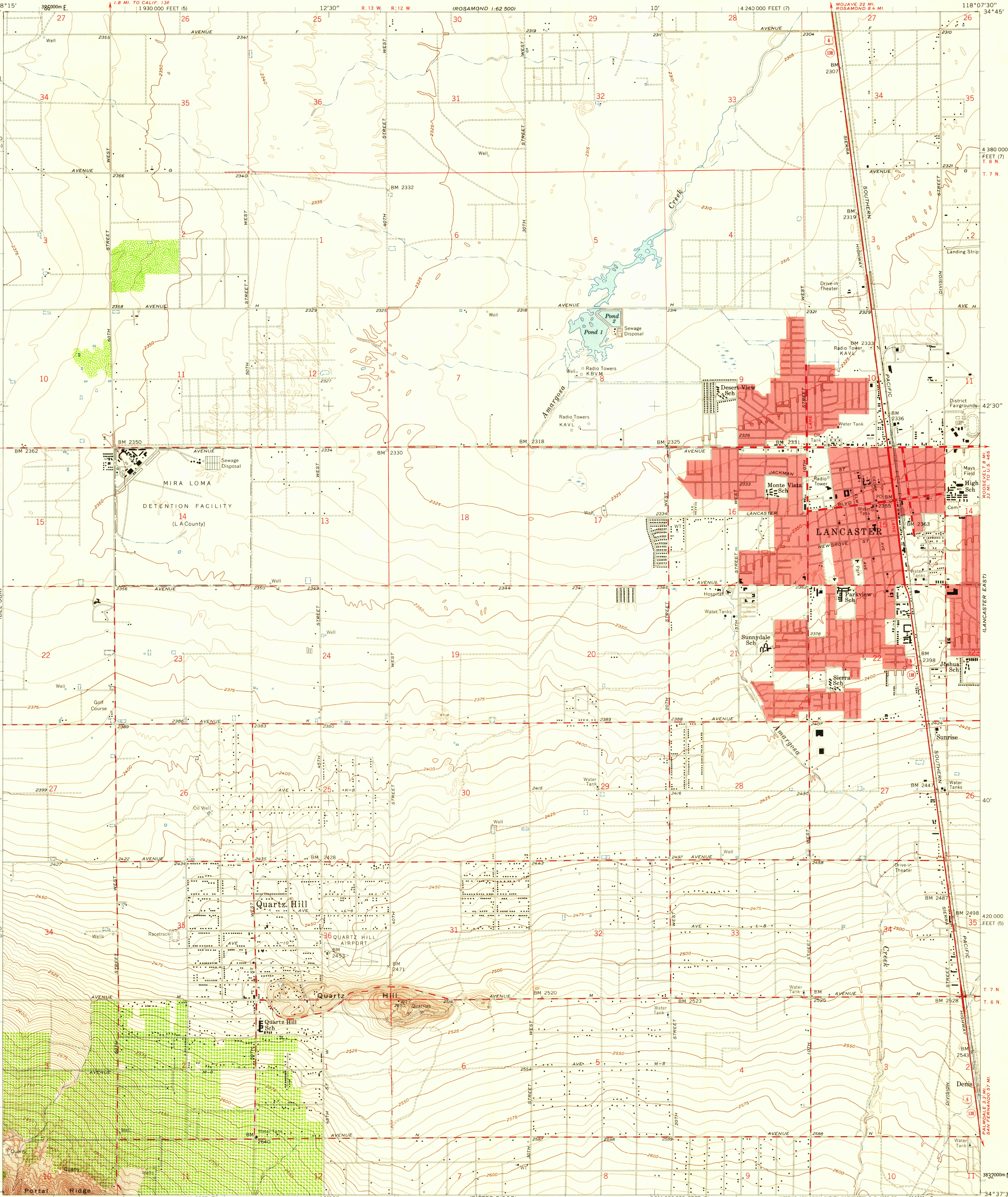


UNITED STATES  
DEPARTMENT OF THE INTERIOR  
GEOLOGICAL SURVEY

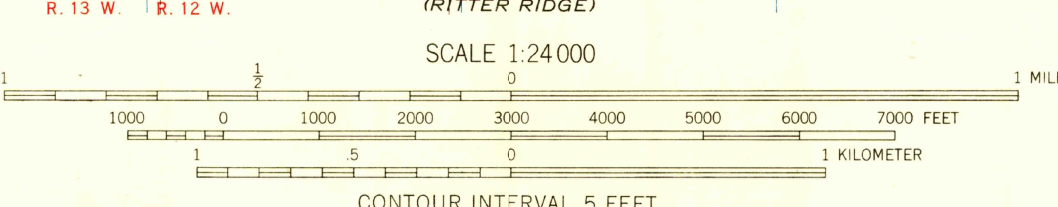
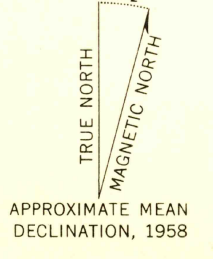
STATE OF CALIFORNIA  
EDMUND G. BROWN, GOVERNOR  
HARVEY O. BANKS, DIRECTOR OF WATER RESOURCES

LOS ANGELES COUNTY  
BOARD OF SUPERVISORS

LANCASTER WEST QUADRANGLE  
CALIFORNIA-LOS ANGELES CO.  
7.5 MINUTE SERIES (TOPOGRAPHIC)  
NW 4 LANCASTER 15' QUADRANGLE



Mapped, edited, and published by the Geological Survey  
Control by USGS and USC&GS  
Topography by planetable surveys 1929-1931  
Revised from aerial photographs taken 1956  
Field check 1958  
Polyconic projection. 1927 North American datum  
10,000-foot grids based on California coordinate system,  
zones 5 and 7  
1000-meter Universal Transverse Mercator grid ticks,  
zone 11, shown in blue  
Red tint indicates areas in which only  
landmark buildings are shown



CONTOUR INTERVAL 5 FEET  
DATUM IS MEAN SEA LEVEL

USGS  
Historical File  
Topographic Division

ROAD CLASSIFICATION

Heavy-duty	Light-duty
Medium-duty	Unimproved dirt
U.S. Route	State Route



LANCASTER WEST, CALIF.  
NW 4 LANCASTER 15' QUADRANGLE  
N3437.5-W11807.5/7.5

U.S.G.S.  
FILE COPY  
TOPOGRAPHIC DIVISION

1958

JUL 13 1958

3445