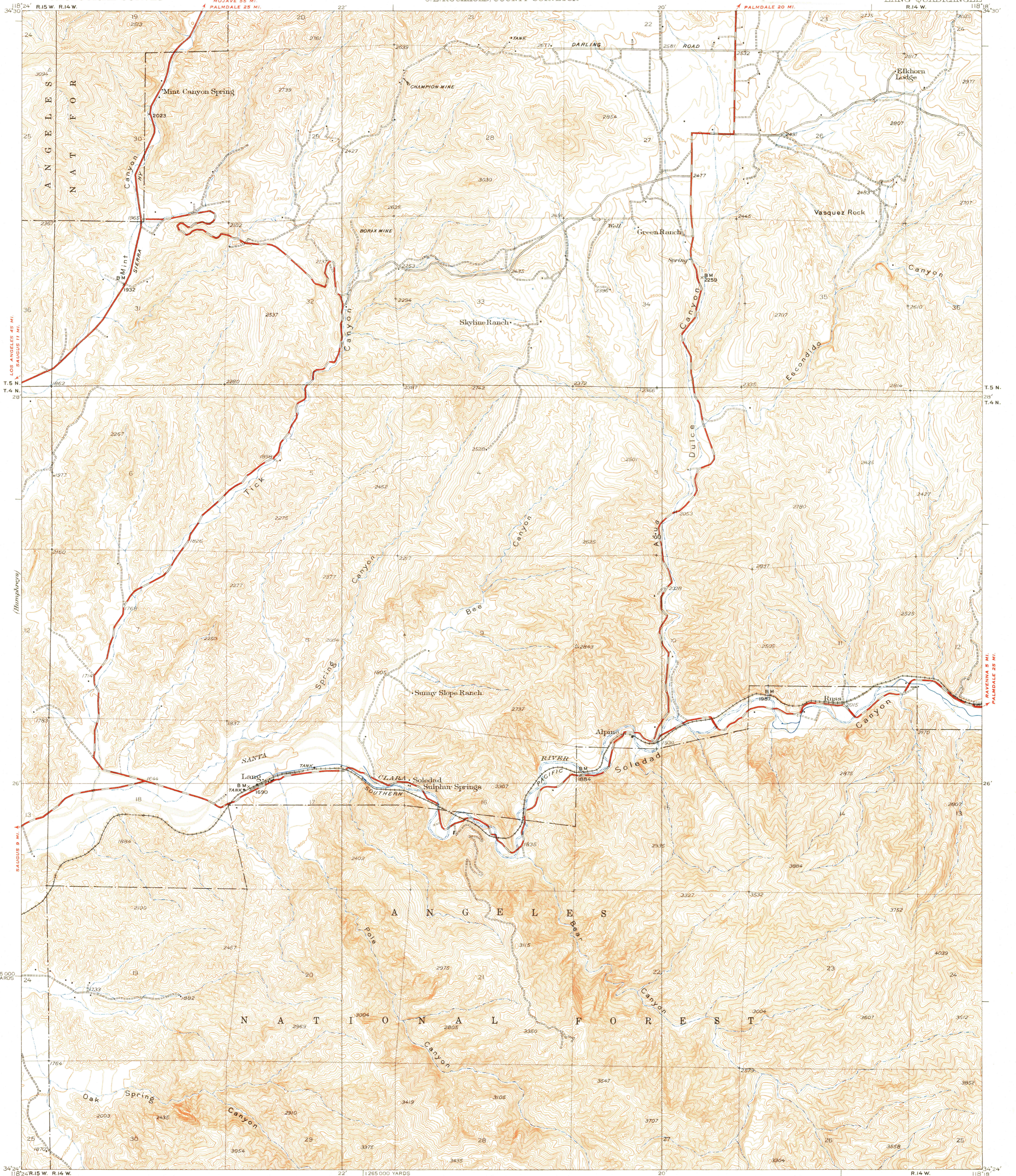
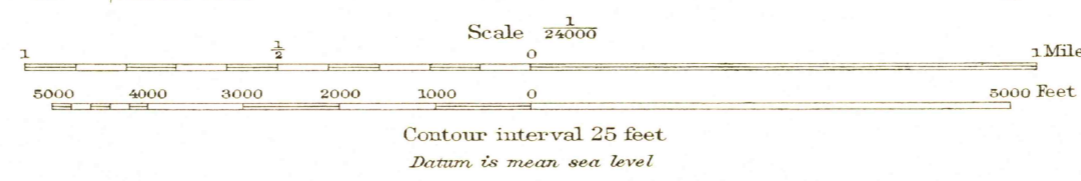


U.S.G.A.
FILE COPY
Inspection and Control



Topography by C.P. McKinley
Control by U.S. Geological Survey and
U.S. Coast and Geodetic Survey
Surveyed in 1929

16°
TRUE NORTH
MAGNETIC NORTH
APPROXIMATE MEAN
DECLINATION, 1929



Polyconic projection, North American datum
5000 yard grid based upon U.S. zone system, G

U.S.G.A.
FILE COPY
Inspection and Control

HARD IMPROVISED SURFACED ROADS
OTHER MAIN TRAVELED ROADS
1932

USGS
Historical File
Geographic Division

LANG, CALIF.
Edition of 1933
JAN 26 1954

1045