

DEPARTMENT OF THE INTERIOR
U. S. GEOLOGICAL SURVEY

92 - S - 11 - W / 2
LOS ANGELES COUNTY, CALIFORNIA
BOARD OF SUPERVISORS
SIDNEY T. GRAVES, CHAIRMAN
J. E. ROCKHOLD, COUNTY SURVEYOR

U. S. G. S.
FILE COPY
Inspection and Library

CALIFORNIA
(LOS ANGELES COUNTY)
LANG QUADRANGLE

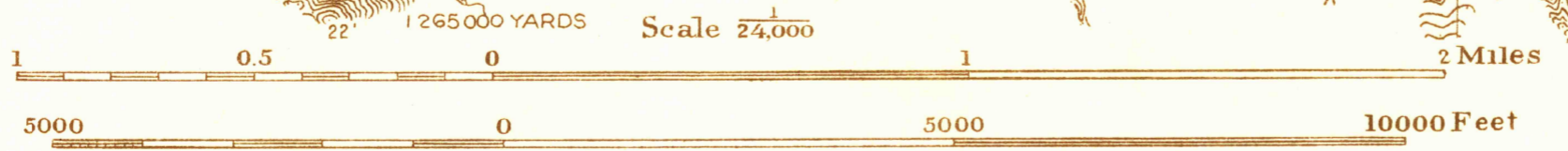
Advance sheet
Subject to correction



5 Miles
4
3
2
1
0
-1

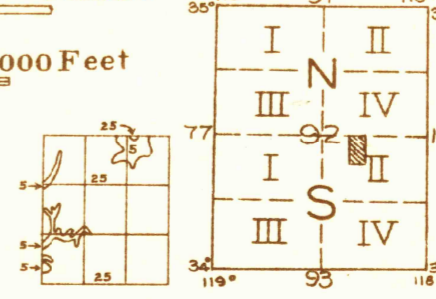
T. G. Gerdine, Division Engineer
Topography by C. P. McKinley
Control by U. S. Geological Survey and
U. S. Coast and Geodetic Survey
Surveyed in 1929

APPROXIMATE MEAN
DECLINATION, 1929



Contour interval 5 and 25 feet. (see diagram)
Datum is mean sea level

Polygonic projection. North American datum
5000 yard grid based upon U. S. zone system, G



USGS
Historical File
Topographic Division

LANG, CALIF.