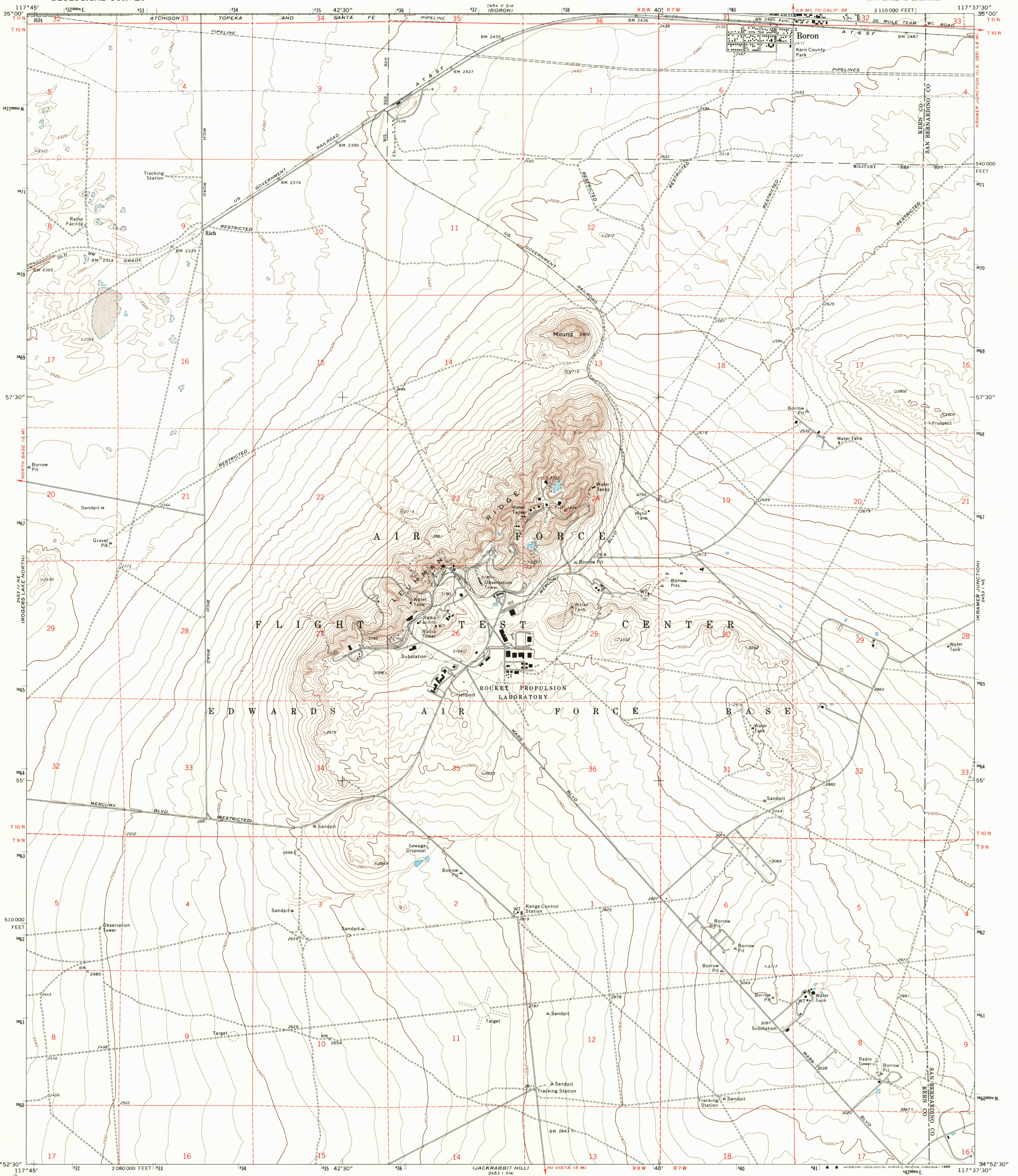
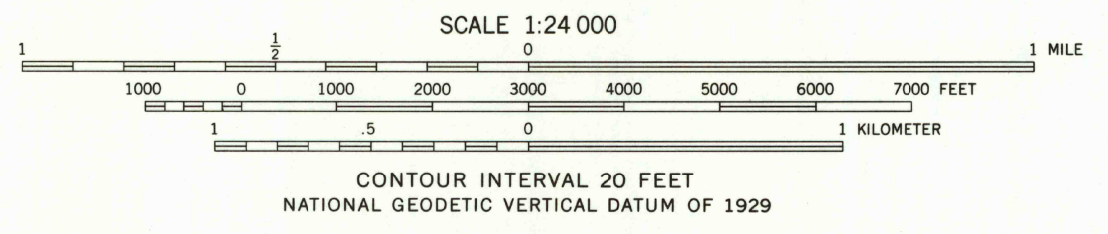
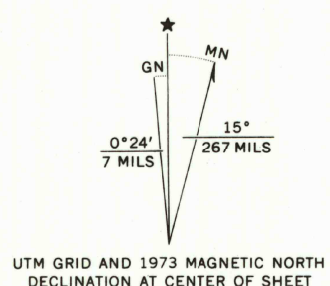


UNITED STATES  
DEPARTMENT OF THE INTERIOR  
GEOLOGICAL SURVEY

LEUHMANN RIDGE QUADRANGLE  
CALIFORNIA  
7.5 MINUTE SERIES (TOPOGRAPHIC)  
NW 1/4 KRAMER 15' QUADRANGLE



Mapped, edited, and published by the Geological Survey  
Control by USGS and NOS/NOAA  
Topography by photogrammetric methods from aerial  
photographs taken 1972. Field checked 1973  
Supersedes Army Map Service Rich map dated 1947  
Projection and 10,000-foot grid ticks: California coordinate  
system, zone 5 (Lambert conformal conic)  
1000-meter Universal Transverse Mercator grid ticks,  
zone 11, shown in blue. 1927 North American datum  
To place on the predicted North American Datum 1983  
move the projection lines 5 meters north and  
83 meters east as shown by dashed corner ticks  
There may be private inholdings within the boundaries of  
the National or State reservations shown on this map



ROAD CLASSIFICATION  
Primary highway,  
hard surface ———— Improved surface  
Secondary highway,  
hard surface ———— Unimproved road  
Interstate Route ———— U. S. Route ———— State Route



LEUHMANN RIDGE, CALIF.  
NW 1/4 KRAMER 15' QUADRANGLE  
34117-H6-TF-024