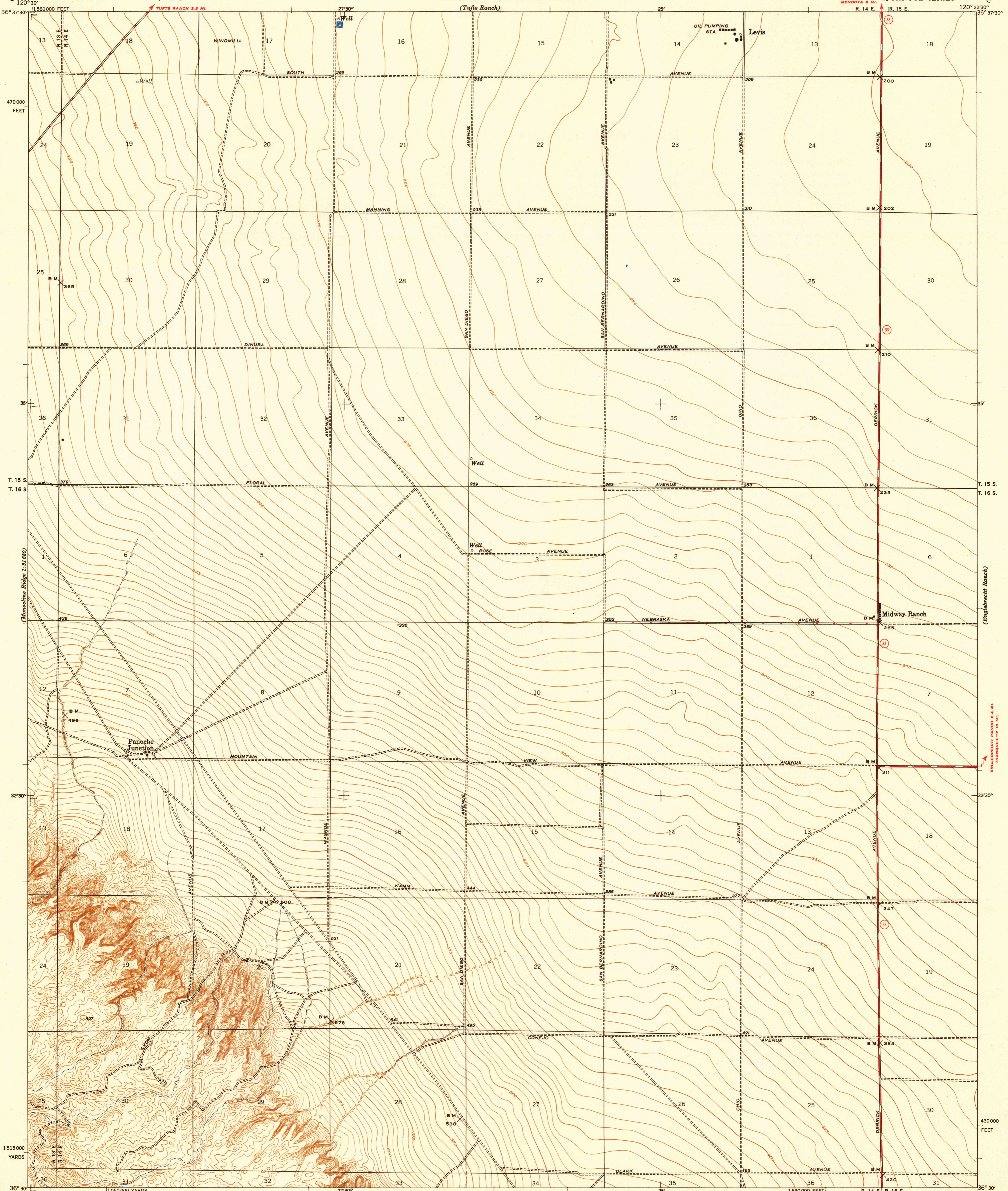


U. S. G. S.  
FILE COPY



Mapped by the Geological Survey  
1921  
Culture revised in 1946

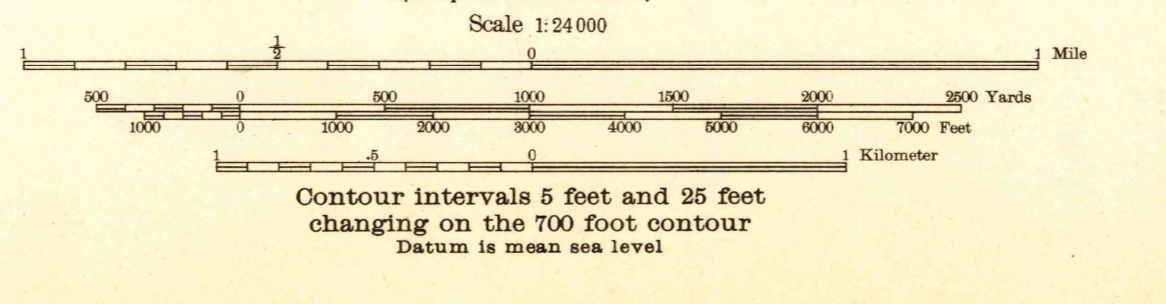
ROAD CLASSIFICATION 1946  
Dependable hard surface (thick red line)  
Heavy-duty road (red line)  
Secondary hard surface (dashed red line)  
All-weather road (dotted red line)  
More than two lanes indicated along road with tick at point of change (red line with tick)

U. S. Route (10)  
State Route (20)

Loose surface graded (dotted red line)  
Unimproved graded (dashed red line)  
Dirt road (dotted red line)

TRUE NORTH  
MAGNETIC NORTH

APPROXIMATE MEAN  
DECLINATION, 1946



USGS  
Historical File  
Topographic Division

USGS  
Historical File  
Topographic Division  
FILE COPY

Polyconic projection. 1927 North American datum  
5000 yard grid based on U. S. zone system, G  
10000 foot grid based on California (4)  
rectangular coordinate system  
Dotted corners indicate positions of meridian  
and parallels based on North American datum

LEVIS, CALIF.  
Edition of 1947

CANTUA SCHOOL 2 1/2 MI.  
COALINSA 2 1/2 MI.

N 3630-W12022.5/7.5