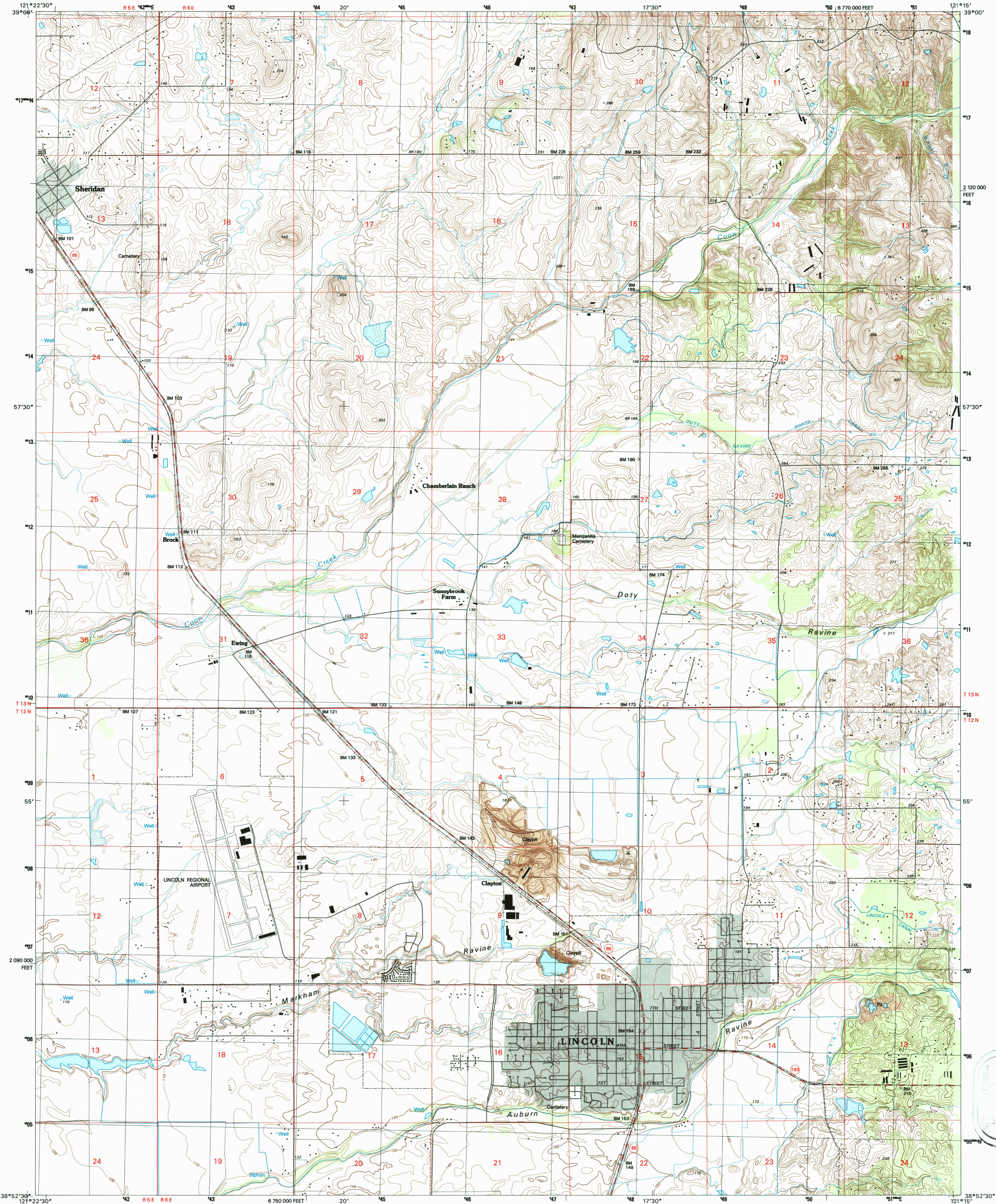


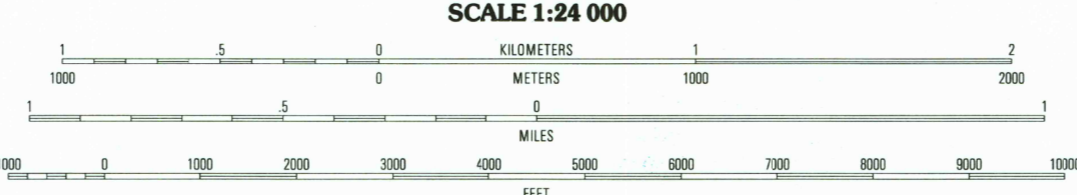
UNITED STATES
DEPARTMENT OF THE INTERIOR
GEOLOGICAL SURVEY

LINCOLN QUADRANGLE
CALIFORNIA-PLACER CO.
7.5-MINUTE SERIES (TOPOGRAPHIC)



Produced by the United States Geological Survey
Topography compiled 1949. Planimetry derived from imagery
taken 1992. Public Land Survey System and Survey Control
current as of 1953. Contours that conflict with updated
major features are dashed. Contour gaps on the east edge
are due to NAD 83 shift.
North American Datum of 1983 (NAD 83). Projection and
1000-meter grid: Universal Transverse Mercator, zone 10
10 000-foot ticks: California Coordinate System of 1983 (zone 2)
North American Datum of 1927 (NAD 27) is shown by dashed
corner ticks. The value of the shift between NAD 83 and
NAD 27 for 7.5-minute intersections are obtainable from
National Geodetic Survey NADCON software

UTM GRID AND 1997 MAGNETIC NORTH
DECLINATION AT CENTER OF SHEET



CONTOUR INTERVAL 5 FEET
NATIONAL GEODETIC DATUM OF 1929
TO CONVERT FROM FEET TO METERS, MULTIPLY BY 0.3048

THIS MAP COMPLES WITH NATIONAL MAP ACCURACY STANDARDS
FOR SALE BY U.S. GEOLOGICAL SURVEY, P.O. BOX 25286, DENVER, COLORADO 80225
A FOLDER DESCRIBING TOPOGRAPHIC MAPS AND SYMBOLS IS AVAILABLE ON REQUEST

ROAD CLASSIFICATION

Primary highway
hard surface
Secondary highway
hard surface
Interstate Route
U.S. Route
State Route

Light-duty road, hard or
improved surface
Unimproved road

QUADRANGLE LOCATION

1	2	3
4	5	6
7	8	9

1 Wheatland
2 Camp Far West
3 Wolf
4 Sheridan
5 Gold Hill
6 Pleasant Grove
7 Roseville
8 Rocklin

ADJOINING 7.5' QUADRANGLE NAMES

LINCOLN, CA
1992

DMA 1761 IV NE-SERIES V895

