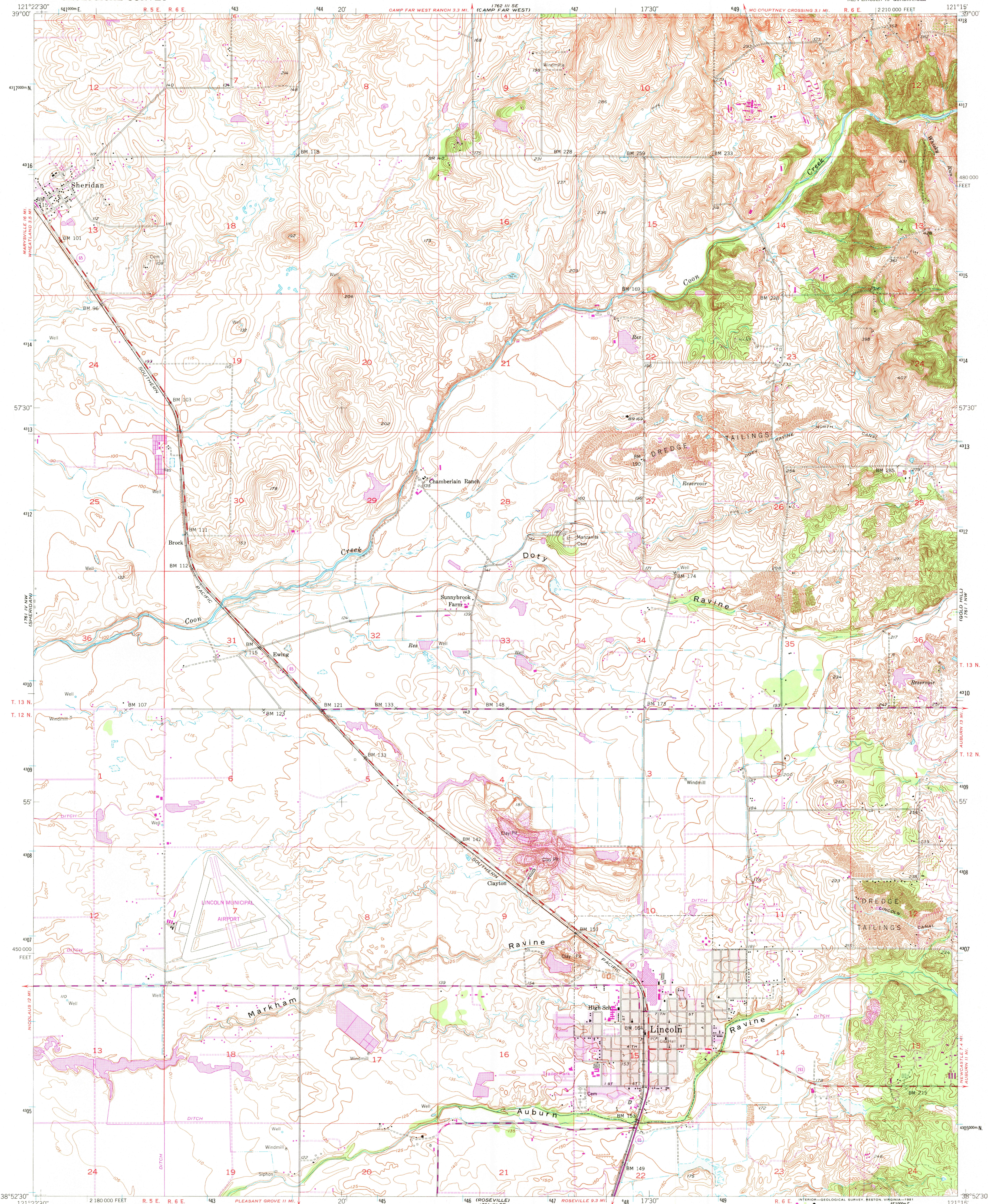


UNITED STATES  
DEPARTMENT OF THE INTERIOR  
GEOLOGICAL SURVEY

LINCOLN QUADRANGLE  
CALIFORNIA—PLACER CO.  
7.5 MINUTE SERIES (TOPOGRAPHIC)  
NE/4 LINCOLN 15' QUADRANGLE



Mapped, edited, and published by the Geological Survey

Control by USGS and NOS/NOAA

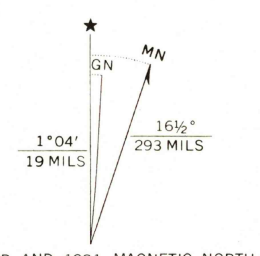
Topography by plane-table surveys 1908 and by Kesh plotter methods  
Culture and drainage compiled from aerial photographs taken 1949  
Contour revision and field check 1953

Polyconic projection. 10,000-foot grid ticks based on California  
coordinate system, zone 2. 1000-meter Universal Transverse  
Mercator grid ticks, zone 10, shown in blue. 1927 North  
American Datum. To place on the predicted North American  
Datum 1983 move the projection lines 15 meters north and  
91 meters east as shown by dashed corner ticks.

Dashed land lines indicate approximate locations

Red tint indicates areas in which only landmark  
buildings are shown

Revisions shown in purple and woodland compiled from  
aerial photographs taken 1978 and other source data  
This information not field checked. Map edited 1981



CONTOUR INTERVAL 5 FEET  
NATIONAL GEODETIC VERTICAL DATUM OF 1929

THIS MAP COMPLIES WITH NATIONAL MAP ACCURACY STANDARDS  
FOR SALE BY U. S. GEOLOGICAL SURVEY, DENVER, COLORADO 80225, OR RESTON, VIRGINIA 22092  
A FOLDER DESCRIBING TOPOGRAPHIC MAPS AND SYMBOLS IS AVAILABLE ON REQUEST



QUADRANGLE LOCATION

ROAD CLASSIFICATION  
Heavy-duty ——— 2 LANE 6 LANE Light-duty ———  
Medium-duty ——— 2 LANE 6 LANE Unimproved dirt ———  
U. S. Route ——— State Route ———

USGS  
HISTORICAL FILE  
NATIONAL MAPPING DIVISION

LINCOLN, CALIF.  
NE/4 LINCOLN 15' QUADRANGLE  
N3852.5—W12115/7.5

1953  
PHOTOREVISED 1981  
DMA 1761 IV NE-SERIES V895

4910  
SEP 21 1981