

W. RAFAEL MTN.

WAR DEPARTMENT
CORPS OF ENGINEERS, U. S. ARMY

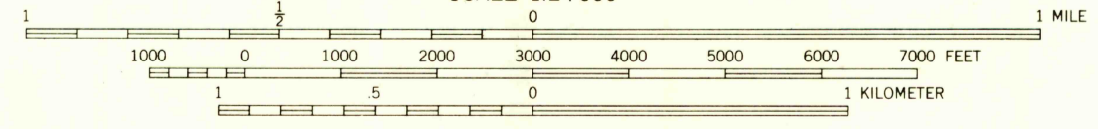
LITTLE PINE MOUNTAIN QUADRANGLE
CALIFORNIA—SANTA BARBARA CO.
7.5 MINUTE SERIES (TOPOGRAPHIC)

STRAWBERRY
PEAK



Prepared by U. S. Department of Agriculture, Forest Service, under the direction of the Chief of Engineers, U. S. Army, 1943.
Control by U. S. Coast and Geodetic Survey, U. S. Geological Survey, and U. S. Forest Service.
Topography by U. S. Forest Service, stereophotogrammetric methods (KEK plotter).
Photography by U. S. Forest Service, 1942.
Polyconic Projection, 1927 North American Datum.

SCALE 1:24,000



CONTOUR INTERVAL 50 FEET
DATUM IS 1929 MEAN SEA LEVEL

10,000-FOOT GRID TICKS, CALIFORNIA PLANE COORDINATE SYSTEM, ZONE 5, SHOWN IN BLACK
1000-METER GRID TICKS, UNIVERSAL TRANSVERSE MERCATOR SYSTEM, ZONE 11, SHOWN IN BLUE

REPRINTED FROM MILITARY EDITION FOR CIVIL USE

FOR SALE BY U. S. GEOLOGICAL SURVEY, DENVER 25, COLORADO OR WASHINGTON 25, D. C.
A FOLDER DESCRIBING TOPOGRAPHIC MAPS AND SYMBOLS IS AVAILABLE ON REQUEST

ROAD CLASSIFICATION
Dependable hard-surface, heavy-duty road. U. S. Route **160**
Loose surface graded, dry weather road. U. S. Route **160**
Secondary, hard-surface, all-weather road. State Route **30**
Dirt road. State Route **30**
More than two lanes indicated by note along road with tick at point of change. **3 LANE 4 LANE**
THIS MAP COMPLIES WITH THE NATIONAL STANDARD MAP ACCURACY REQUIREMENTS.

TRUE NORTH
MAGNETIC NORTH
APPROXIMATE MEAN DECLINATION, 1942

LITTLE PINE MOUNTAIN, CALIF.
N3430-W11937.5/7.5