

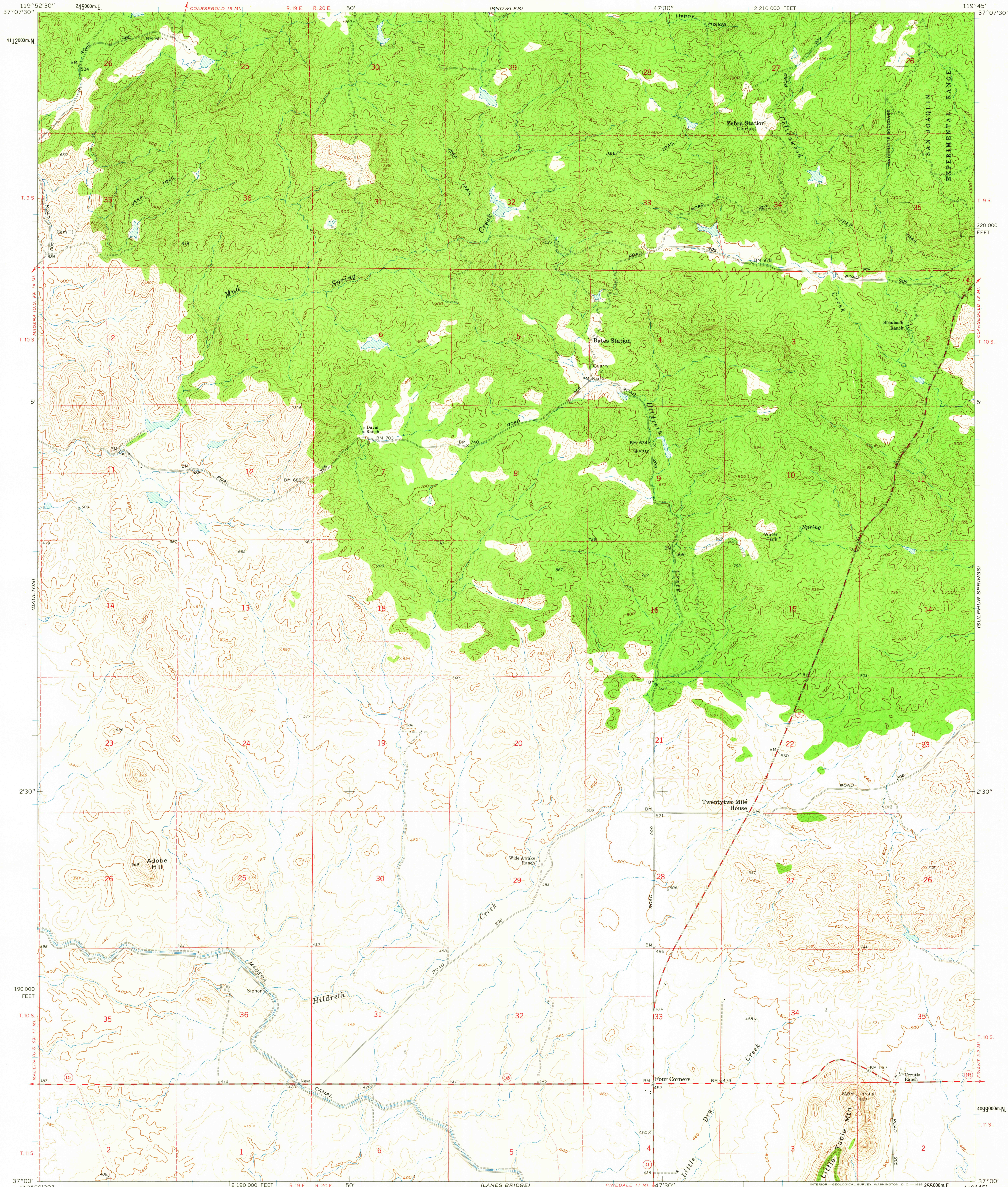
(RAYMOND)

UNITED STATES
DEPARTMENT OF THE INTERIOR
GEOLOGICAL SURVEY

STATE OF CALIFORNIA
DEPARTMENT OF WATER RESOURCES

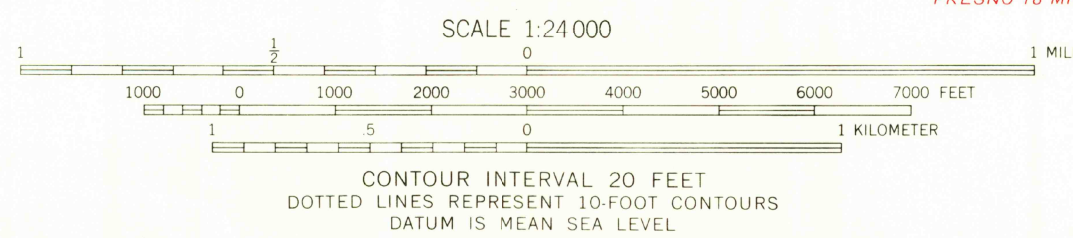
LITTLE TABLE MTN. QUADRANGLE
CALIFORNIA-MADERA CO.
7.5 MINUTE SERIES (TOPOGRAPHIC)
SE/4 RAYMOND 15' QUADRANGLE

(MILLERTON LAKE)
1:52 500



Mapped, edited, and published by the Geological Survey
Control by USGS and USC&GS
Topography by photogrammetric methods from aerial
photographs taken 1959. Field checked 1962
Polyconic projection. 1927 North American datum
10,000-foot grid based on California coordinate system, zone 3
1000-meter Universal Transverse Mercator grid ticks,
zone 11, shown in blue
Fine red dashed lines indicate selected fence lines

APPROXIMATE MEAN
DECLINATION, 1962



USGS
Historical File
Topographic Division

ROAD CLASSIFICATION
Medium-duty ——— Light-duty ———
Unimproved dirt - - - - -
State Route ○



LITTLE TABLE MTN., CALIF.
SE/4 RAYMOND 15' QUADRANGLE
N3700—W11945/7.5

THIS MAP COMPLIES WITH NATIONAL MAP ACCURACY STANDARDS
FOR SALE BY U. S. GEOLOGICAL SURVEY, DENVER 25, COLORADO OR WASHINGTON 25, D. C.
A FOLDER DESCRIBING TOPOGRAPHIC MAPS AND SYMBOLS IS AVAILABLE ON REQUEST

1962

NOV 25 1962

37 70