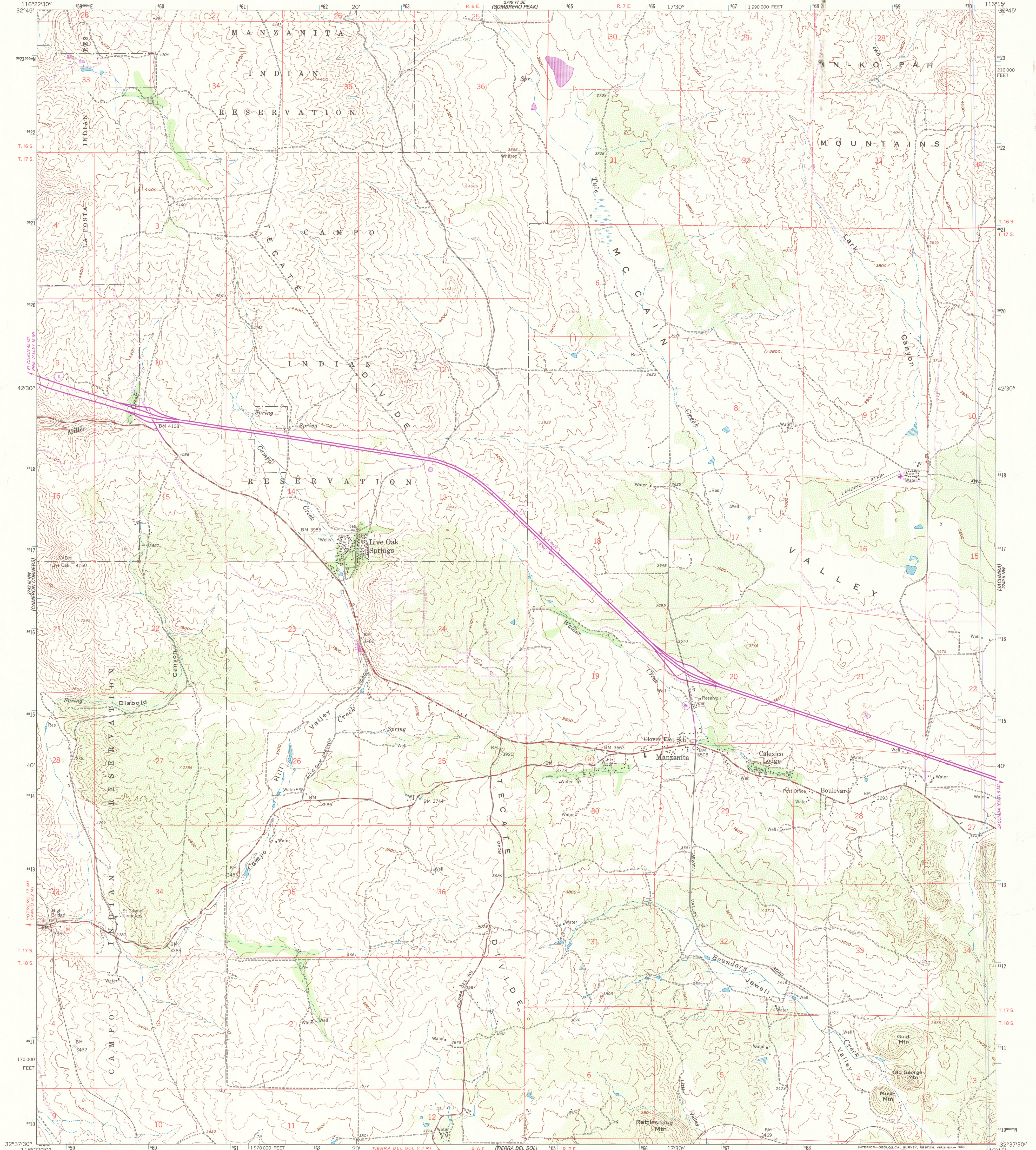


UNITED STATES
DEPARTMENT OF THE INTERIOR
GEOLOGICAL SURVEY

LIVE OAKS SPRINGS QUADRANGLE
CALIFORNIA-SAN DIEGO CO.
7.5 MINUTE SERIES (TOPOGRAPHIC)



Produced by the United States Geological Survey in cooperation with California Department of Water Resources

Control by USGS, NOS/NOAA and USCE

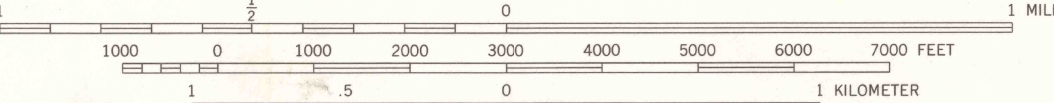
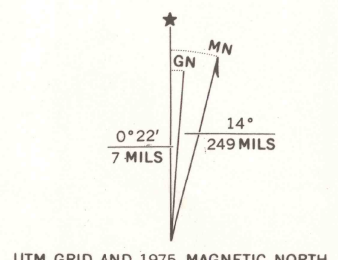
Compiled from aerial photographs taken 1954. Field checked 1959

North American Datum of 1927 (NAD 27). Projection and 10,000-foot ticks: California Coordinate System, zone 6 (Lambert Conformal Conic)

Blue 1000-meter Universal Transverse Mercator ticks, zone 11

North American Datum of 1983 (NAD 83) is shown by dashed corner ticks. The values of the shift between NAD 27 and NAD 83 for 7.5-minute intersections are obtainable from National Geodetic Survey NADCON software

There may be private inholdings within the boundaries of the National or State reservations shown on this map



CONTOUR INTERVAL 40 FEET
NATIONAL GEODETIC VERTICAL DATUM OF 1929

THIS MAP COMPLIES WITH NATIONAL MAP ACCURACY STANDARDS
FOR SALE BY U.S. GEOLOGICAL SURVEY
DENVER, COLORADO 80225, OR RESTON, VIRGINIA 22092
A FOLDER DESCRIBING TOPOGRAPHIC MAPS AND SYMBOLS IS AVAILABLE ON REQUEST



ROAD CLASSIFICATION
Heavy-duty ——— Light-duty ———
Medium-duty ——— Unimproved dirt ———
U.S. Route ——— State Route ———
Interstate Route ———

LIVE OAKS SPRINGS, CA
32116-F3-TF-024

1959
PHOTOREVISED 1975
DMA 2749 II NE-SERIES V895