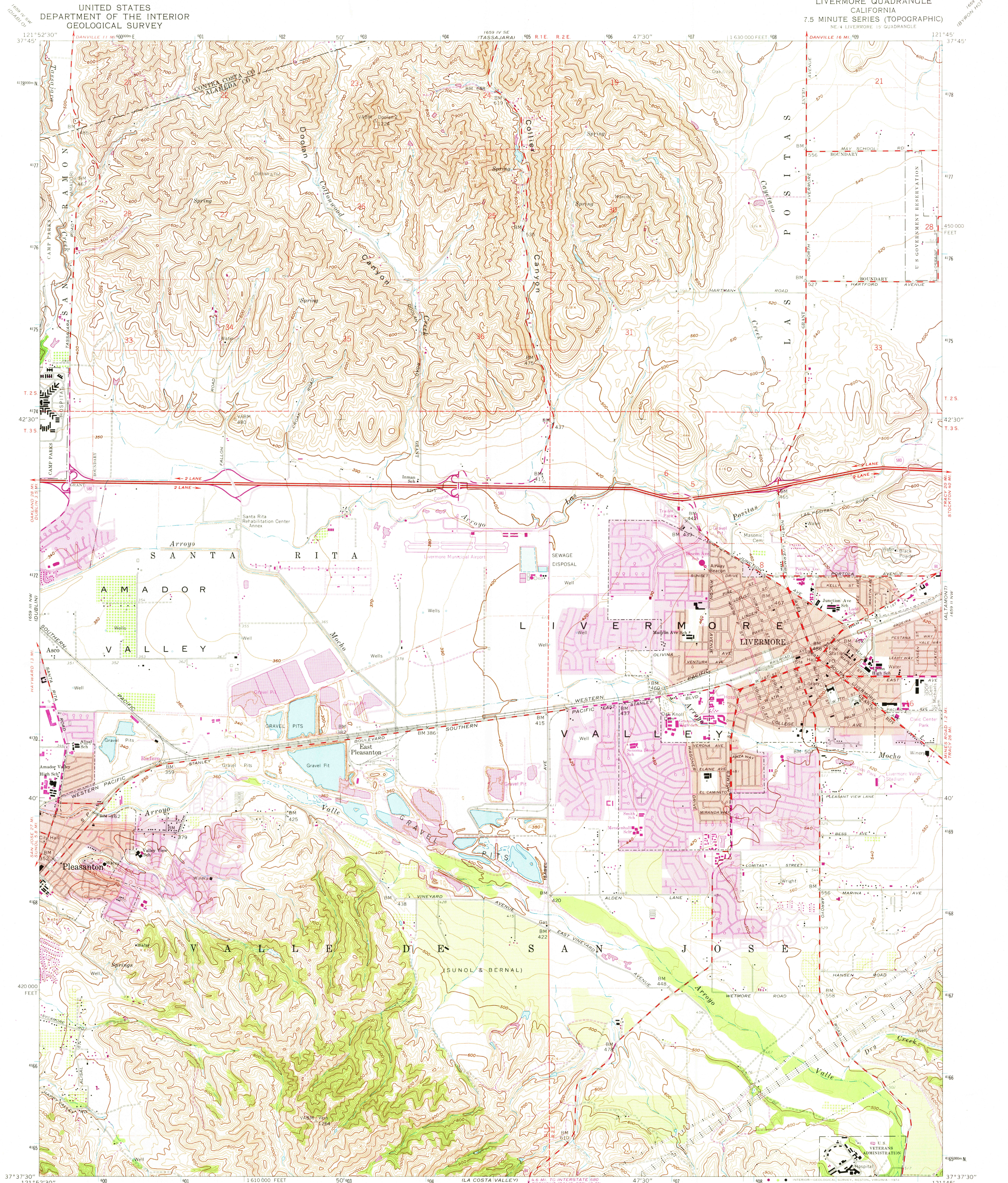
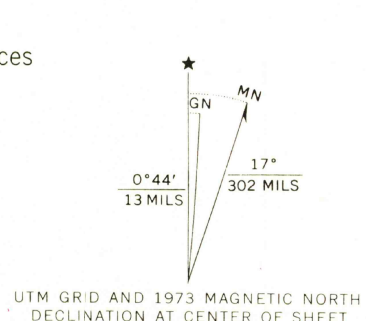


UNITED STATES
DEPARTMENT OF THE INTERIOR
GEOLOGICAL SURVEY

LIVERMORE QUADRANGLE
CALIFORNIA
7.5 MINUTE SERIES (TOPOGRAPHIC)
NE 4 LIVERMORE 15 QUADRANGLE



Mapped, edited, and published by the Geological Survey
with cooperation by the California Department of Water Resources
Control by USGS, USC&GS, Alameda County, and State of California
Topography from aerial photographs by photogrammetric methods
Aerial photographs taken 1949. Field check 1953
Revised from aerial photographs taken 1960. Field check 1961
Polyconic projection. 1927 North American datum
10,000-foot grid based on California coordinate system, zone 3
1000-meter Universal Transverse Mercator grid ticks,
zone 10, shown in blue
Red tint indicates areas in which only landmark buildings are shown
Fine red dashed lines indicate selected fence lines
Revisions shown in purple compiled from aerial photographs
taken 1968 and 1973. This information not field checked
Purple tint indicates extension of urban areas



THIS MAP COMPLIES WITH NATIONAL MAP ACCURACY STANDARDS
FOR SALE BY U.S. GEOLOGICAL SURVEY, DENVER, COLORADO 80225, OR RESTON, VIRGINIA 22092
A FOLDER DESCRIBING TOPOGRAPHIC MAPS AND SYMBOLS IS AVAILABLE ON REQUEST

ROAD CLASSIFICATION

Heavy-duty	Light-duty
Medium-duty	Unimproved dirt
Interstate Route	U.S. Route
	State Route

QUADRANGLE LOCATION

USGS
Historical File
Topographic Division

LIVERMORE, CALIF.
NE 4 LIVERMORE 15 QUADRANGLE
N3737.5-W12145.7.5

1961
PHOTOREVISED 1968 AND 1973
AMS 1659 III NE SERIES V895

8150

DEC 11 1974