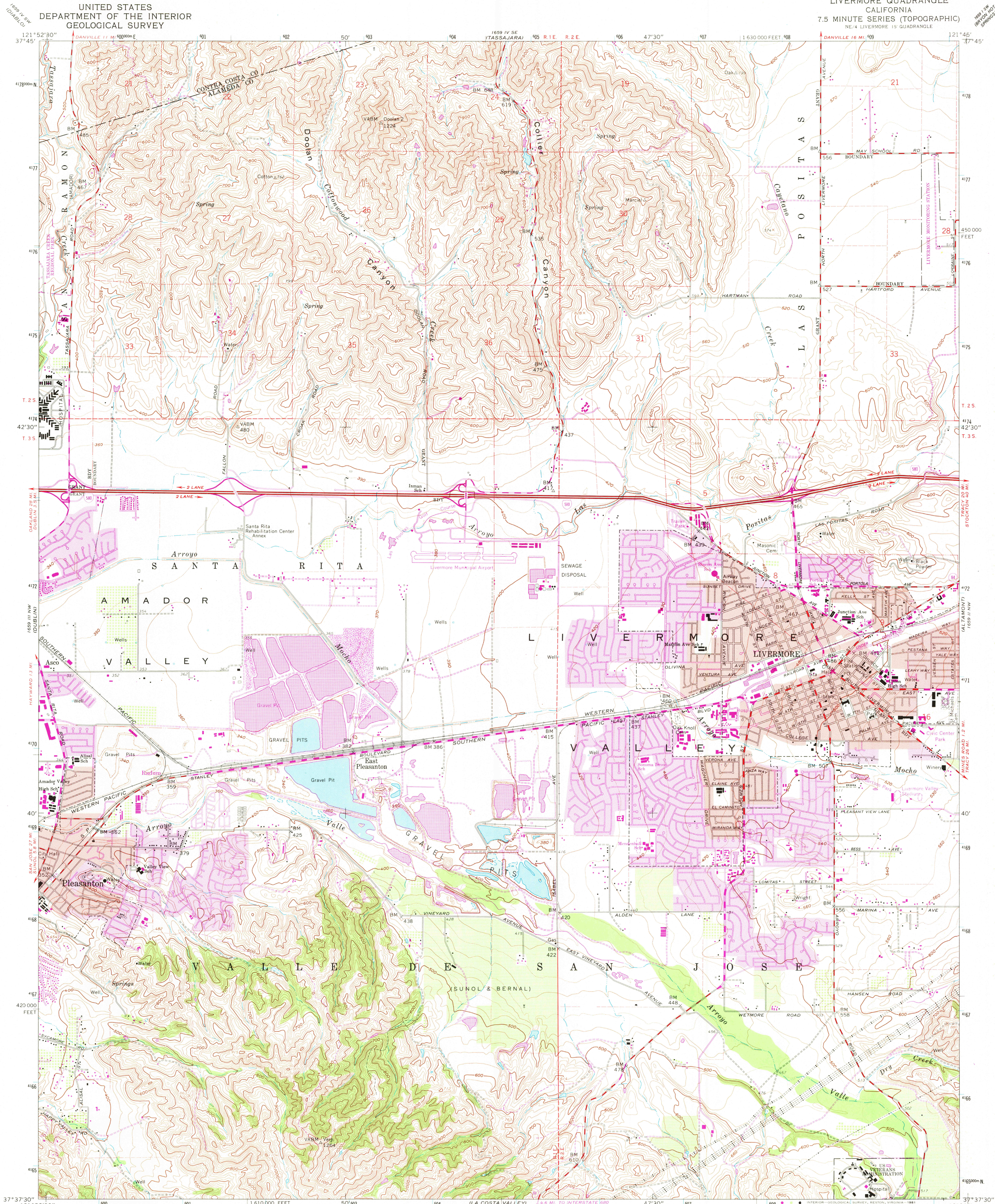


UNITED STATES
DEPARTMENT OF THE INTERIOR
GEOLOGICAL SURVEY

LIVERMORE QUADRANGLE
CALIFORNIA
7.5 MINUTE SERIES (TOPOGRAPHIC)
NE/4 LIVERMORE 15 QUADRANGLE



Mapped, edited, and published by the Geological Survey
with cooperation by the California Department of Water Resources
Control by USGS, NOS/NOAA, Alameda County, and State of California
Topography from aerial photographs by photogrammetric methods
Aerial photographs taken 1949. Field check 1953
Revised from aerial photographs taken 1960. Field check 1961
Polyconic projection
10,000-foot grid based on California coordinate system, zone 3
1000-meter Universal Transverse Mercator grid ticks,
zone 10, shown in blue. 1927 North American Datum
To place on the predicted North American Datum 1983
move the projection lines 13 meters north and
94 meters east as shown by dashed corner ticks
Red tint indicates areas in which only landmark buildings are shown
Fine red dashed lines indicate selected fence lines
There may be private inholdings within the boundaries
of the National or State reservations shown on this map

Revisions shown in purple and woodland compiled from
aerial photographs taken 1978 and other source data
This information not field checked. Map edited 1980
Purple tint indicates extension of urban areas

THIS MAP COMPLIES WITH NATIONAL MAP ACCURACY STANDARDS
FOR SALE BY U. S. GEOLOGICAL SURVEY, DENVER, COLORADO 80225, OR RESTON, VIRGINIA 22092
A FOLDER DESCRIBING TOPOGRAPHIC MAPS AND SYMBOLS IS AVAILABLE ON REQUEST



USGS
Historical File
National Mapping Div.

LIVERMORE, CALIF.
NE/4 LIVERMORE 15 QUADRANGLE
N3737.5-W12145.7.5

1961
PHOTOREVISED 1980
DMA 1659 III NE SERIES V895

4050
MAY 20 1981