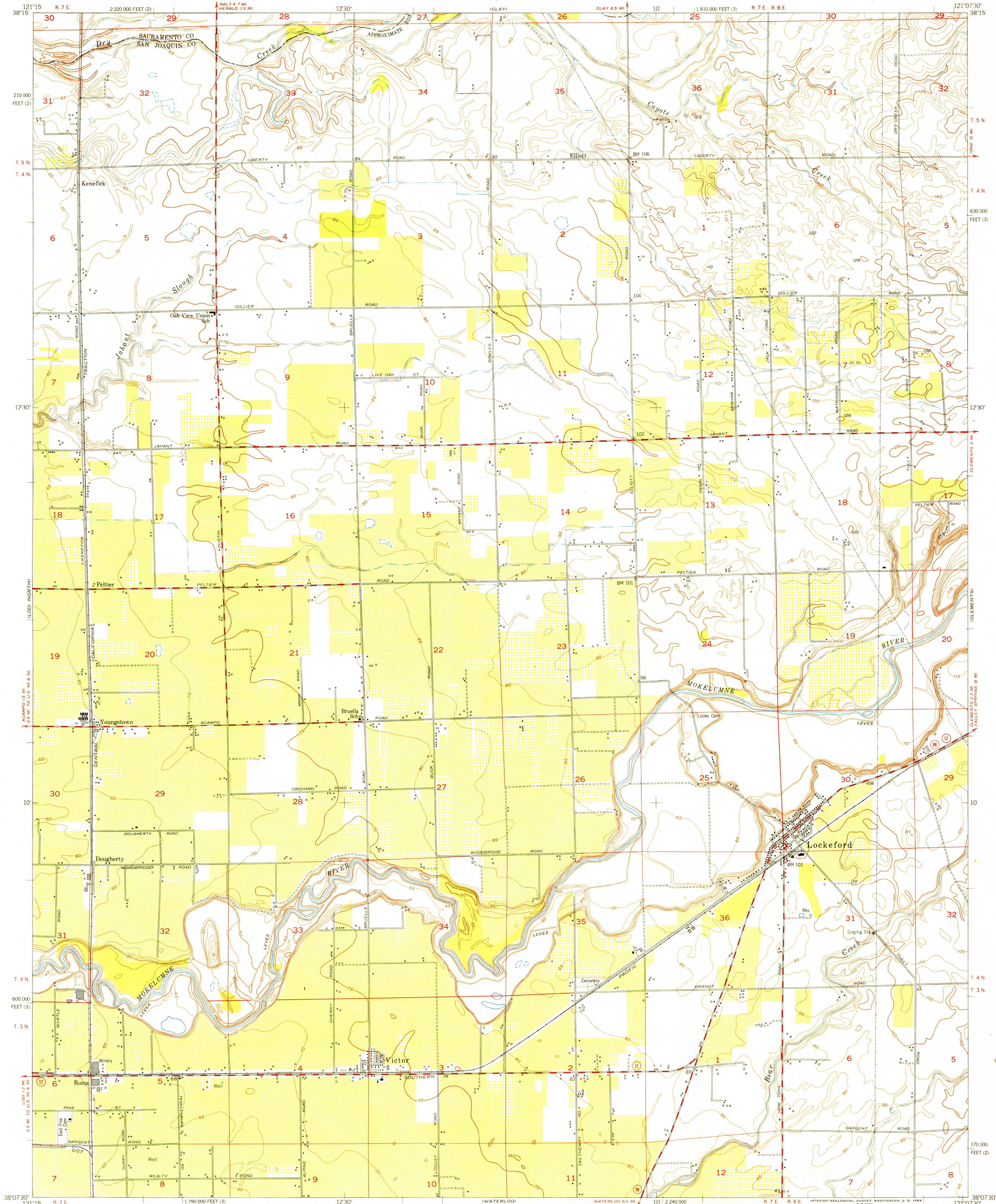


UNITED STATES  
DEPARTMENT OF THE INTERIOR  
GEOLOGICAL SURVEY

STATE OF CALIFORNIA  
GOODWIN J. KNIGHT, GOVERNOR  
FRANK B. DURKEE, DIRECTOR OF PUBLIC WORKS  
A. D. EDMONSTON, STATE ENGINEER

LOCKEFORD QUADRANGLE  
CALIFORNIA  
7.5 MINUTE SERIES (TOPOGRAPHIC)  
NW/4 BELLOTA 15' QUADRANGLE



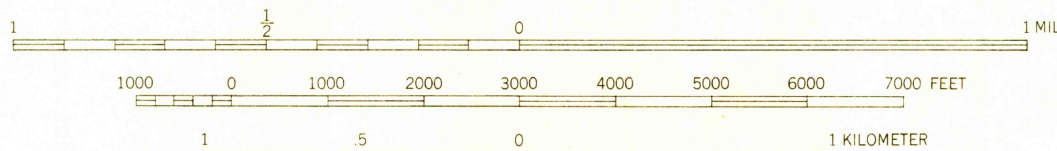
Mapped, edited, and published by the Geological Survey

Control by USGS and USC&GS

Topography by plane-table surveys 1907  
Culture and drainage revised from aerial photographs  
taken 1949. Contour revision and field check 1953

Polyconic projection. 1927 North American datum  
10,000-foot grids based on California coordinate system, zones 2 and 3

SCALE 1:24,000



CONTOUR INTERVAL 5 FEET  
DATUM IS MEAN SEA LEVEL

TRUE NORTH  
MAGNETIC NORTH  
APPROXIMATE MEAN  
DECLINATION, 1953

ROAD CLASSIFICATION  
Heavy-duty ——— 4 LANE 6 LANE Light-duty ———  
Medium-duty ——— 4 LANE 6 LANE Unimproved dirt ———  
U. S. Route ——— State Route ———



USGS  
Historical File  
Topographic Division

LOCKEFORD, CALIF.  
NW/4 BELLOTA 15' QUADRANGLE  
N3807.5-W12107.5/7.5

1953

FOR SALE BY U. S. GEOLOGICAL SURVEY, FEDERAL CENTER, DENVER, COLORADO OR WASHINGTON 25, D. C.  
A FOLDER DESCRIBING TOPOGRAPHIC MAPS AND SYMBOLS IS AVAILABLE ON REQUEST

AUG 3 1954

3200