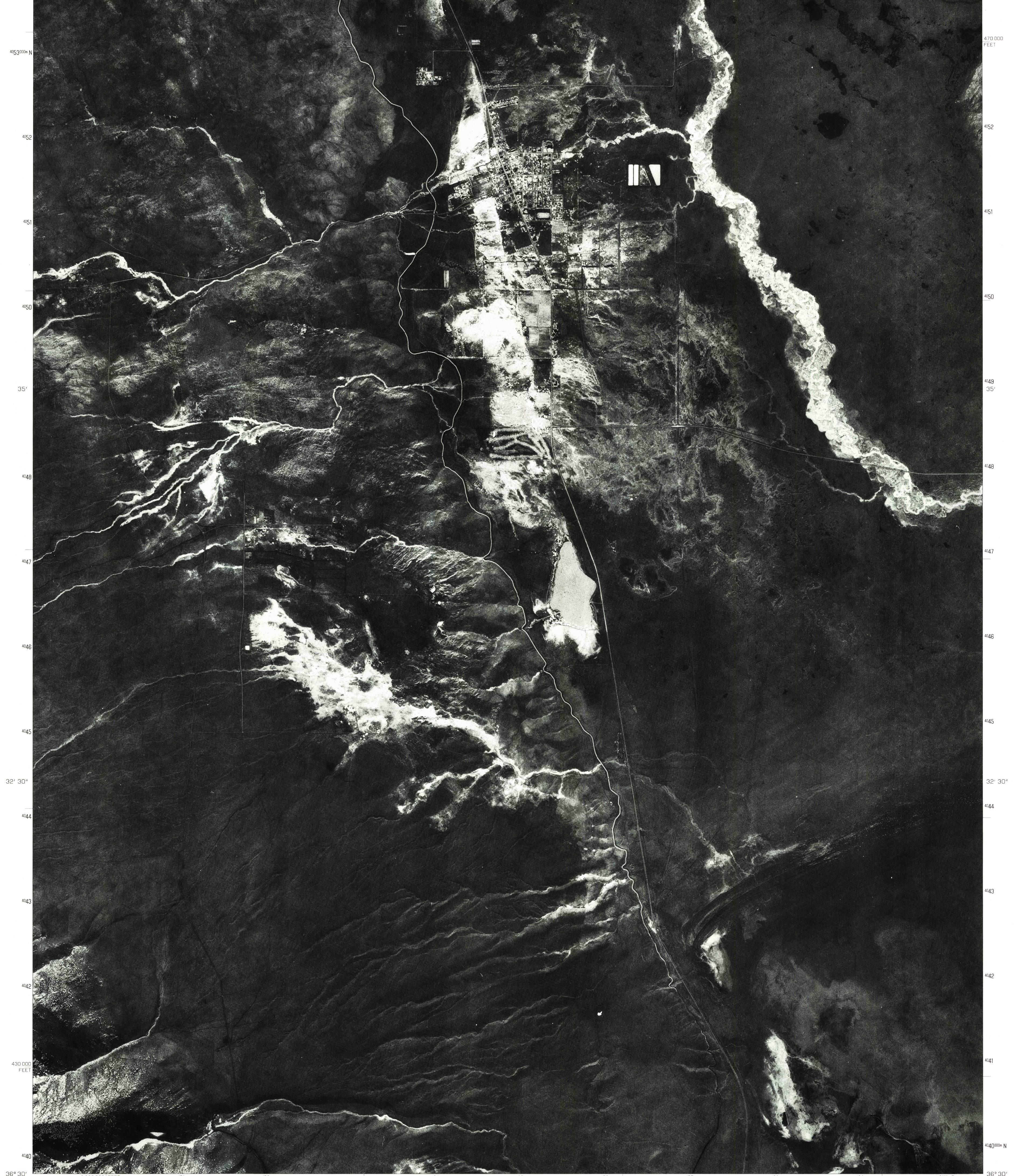
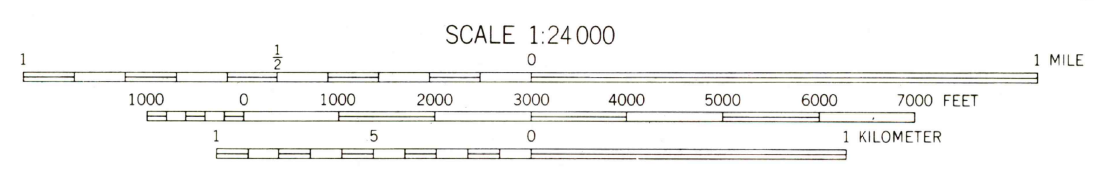
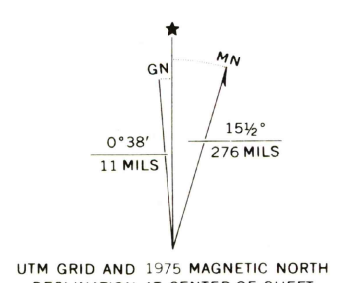


118° 7' 30" 400000 E 401 402 403 5' 404 2357 II SE (LONE PINE NE) 406 2' 30" 408 409 2290000 FEET 40 118° 00' 36° 37' 30"



Produced and published by the Geological Survey

Orthophoto prepared from 1:80 000-scale aerial photographs taken August 31, 1975  
Projection and 10,000-foot grid ticks: California coordinate system, zone 4 (Lambert conformal conic)  
1000-meter Universal Transverse Mercator grid ticks, zone 11. 1927 North American datum  
Photomage transformed by scanning techniques which may produce double or mismatched images; use the mean of image positions for map point.



THIS MAP COMPLIES WITH NATIONAL MAP ACCURACY STANDARDS  
FOR SALE BY U.S. GEOLOGICAL SURVEY, DENVER, COLORADO 80225, OR RESTON, VIRGINIA 22092



QUADRANGLE LOCATION

PRINCIPAL NUMBERED HIGHWAYS  
Interstate Route U S Route State Route

USGS  
HISTORICAL FILE  
NATIONAL MAPPING DIVISION

This quadrangle area also covered by SE quarter of Lone Pine 1:62,500-scale topographic map

LONE PINE SE, CALIF  
N3630-W11800/7.5  
1975  
DMA 2357 II SE—SERIES V095

AUG 18 1981

1003