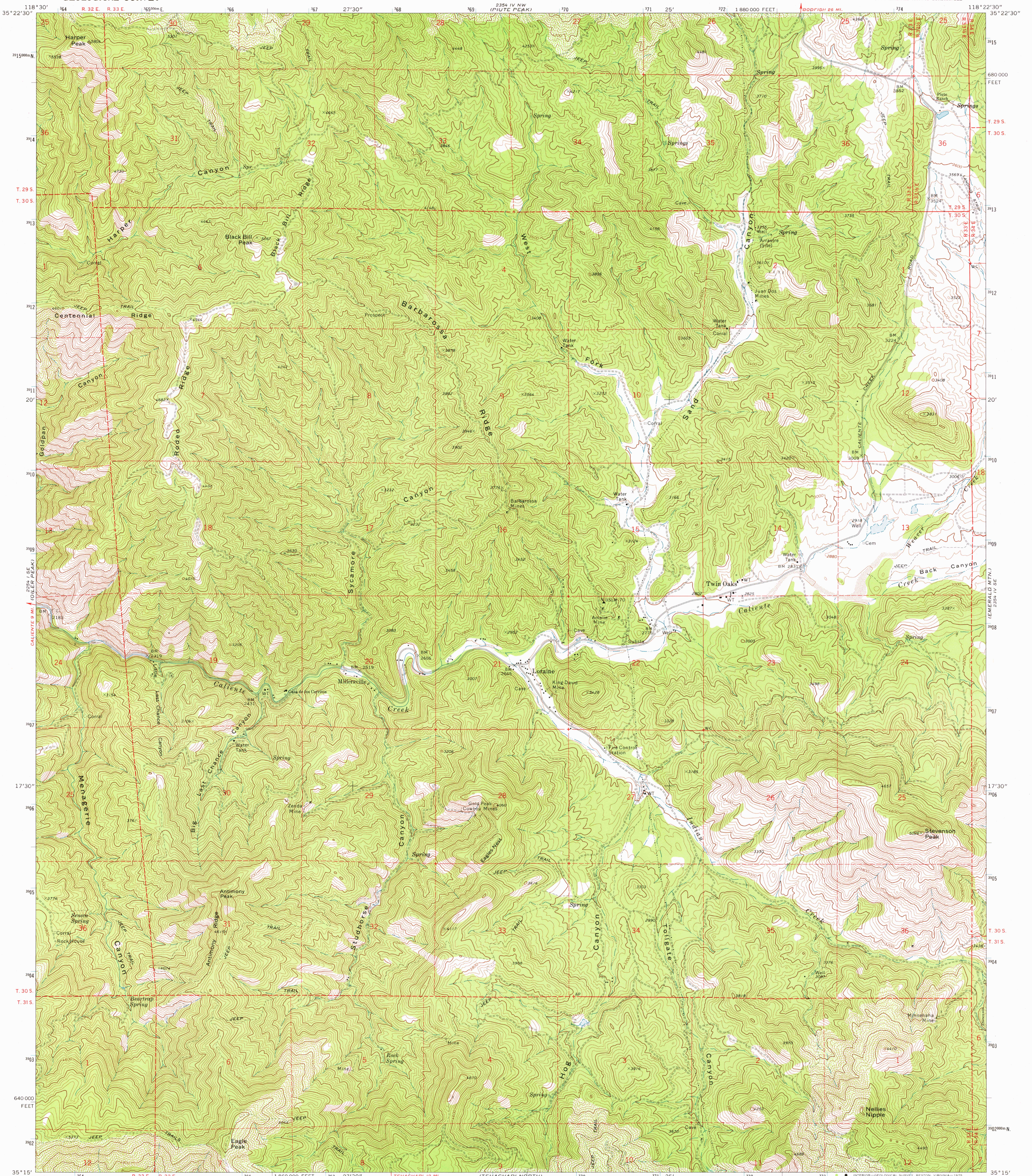
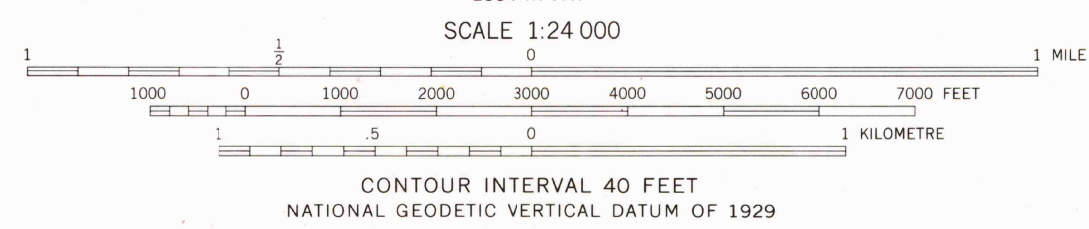
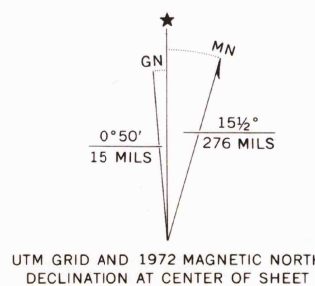


UNITED STATES  
DEPARTMENT OF THE INTERIOR  
GEOLOGICAL SURVEY

LORAIN QUADRANGLE  
CALIFORNIA—KERN CO.  
7.5 MINUTE SERIES (TOPOGRAPHIC)  
SW/4 EMERALD MTN. 15' QUADRANGLE



Mapped, edited, and published by the Geological Survey  
Control by USGS and NOS/NOAA  
Topography by photogrammetric methods from aerial  
photographs taken 1970. Field checked 1972  
Projection and 10,000-foot grid ticks: California coordinate  
system, zone 5 (Lambert conformal conic)  
1000-metre Universal Transverse Mercator grid ticks,  
zone 11, shown in blue. 1927 North American datum  
Certain land lines are omitted because of insufficient data



ROAD CLASSIFICATION

Primary highway, hard surface	Light-duty road, hard or improved surface
Secondary highway, hard surface	Unimproved road
Interstate Route	U.S. Route
	State Route

USGS  
Historical File  
Topographic Division

LORAIN, CALIF.  
SW/4 EMERALD MTN. 15' QUADRANGLE  
N3515-W11822.5/7.5  
1972

MAR 29 1976  
MAR 23 1976

THIS MAP COMPLIES WITH NATIONAL MAP ACCURACY STANDARDS  
FOR SALE BY U. S. GEOLOGICAL SURVEY, DENVER, COLORADO 80225 OR RESTON, VIRGINIA 22092  
A FOLDER DESCRIBING TOPOGRAPHIC MAPS AND SYMBOLS IS AVAILABLE ON REQUEST

AMS 2554 IV SW—SERIES V895