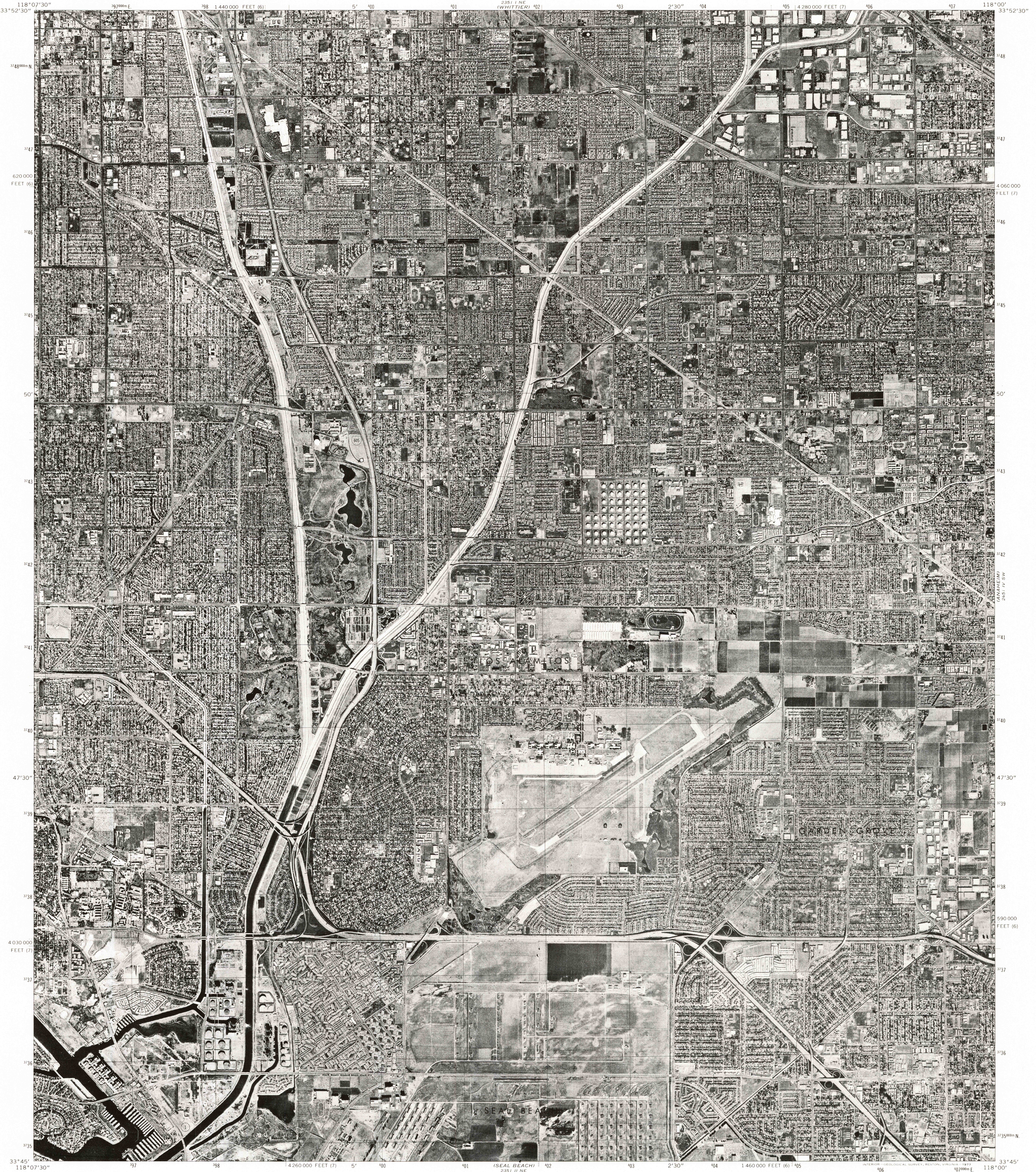


2651 IV NW  
LA HABRA



118°07'30" 33°52'30" 1978000 E 1440000 FEET (6) 5' 400 2351 I NE (WHITTIER) 402 2'30" 404 1428000 FEET (7) 406 118°00' 33°52'30"

3748000 N 3747 4060000 FEET (6) 3746 4060000 FEET (7) 3745 50' 3744 3743 3742 3741 3740 47'30" 3739 3738 4030000 FEET (7) 3737 3736 3735 33°45' 118°07'30" 397 1426000 FEET (7) 5' 400 401 2351 II NE (SEAL BEACH) 402 2'30" 404 1460000 FEET (6) 405 1460000 FEET (6) 406 1078000 E 118°00'

LOS ALAMITOS GARDEN GROVE SEAL BEACH

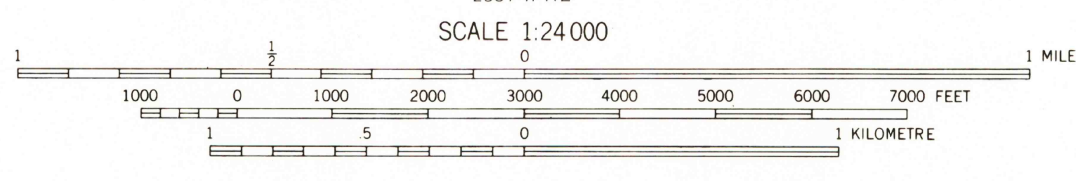
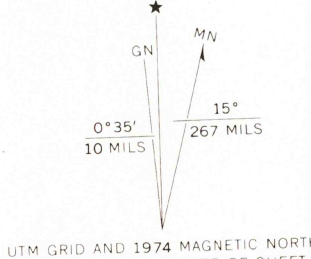
2651 IV SW (ANAHAIM) 2651 IV NW (LA HABRA) 2651 III SW (COSTA MESA) 2651 III NW

Produced and published by the Geological Survey

Orthophoto prepared from 1:80,000-scale aerial photographs taken November 6, 1974

Projection: California coordinate system, zone 7 (Lambert conformal conic)  
10,000-foot grid ticks based on California coordinate system, zones 7 and 6  
1000-metre Universal Transverse Mercator grid, zone 11. 1927 North American datum

Photomage transformed by scanning techniques which may produce double or mismatched images; use the mean of image positions for map point



PRINCIPAL NUMBERED HIGHWAYS  
○ Interstate Route ○ U. S. Route ○ State Route



U.S.G.S.  
Historical File  
Topographic Division

This quadrangle area also covered by 1:24,000-scale topographic map

FEB 08 1977  
LOS ALAMITOS, CALIF.  
N3345-W11800/7.5

1974

AMS 2351 SE - SERIES V095

THIS MAP COMPLIES WITH NATIONAL MAP ACCURACY STANDARDS  
FOR SALE BY U. S. GEOLOGICAL SURVEY, DENVER, COLORADO 80225, OR RESTON, VIRGINIA 22092

1700