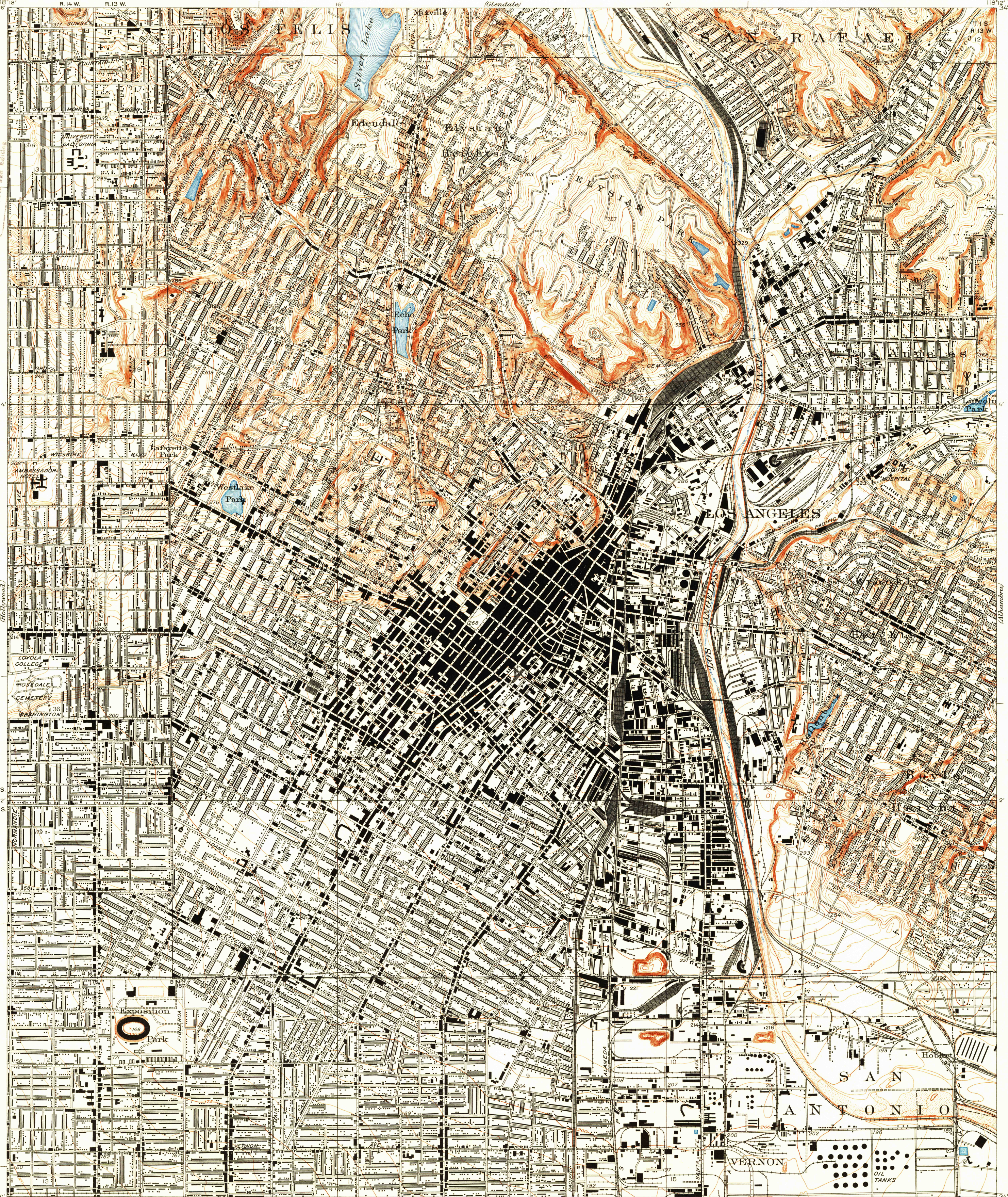
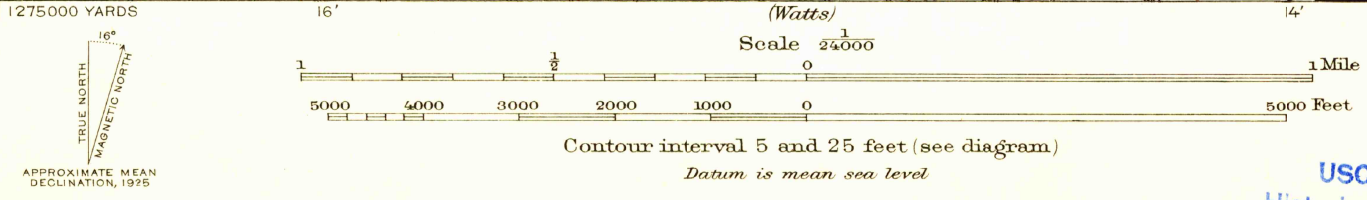


U.S.G.S.  
FILE COPY  
Imagery from Reliance



Topography by C.A. Ecklund  
Control by U.S. Geological Survey,  
U.S. Coast and Geodetic Survey, and City of Los Angeles  
Surveyed in 1925



Polyconic projection. North American datum  
5000 yard grid based upon U.S. zone system, G

USCS  
Historical File  
Topographic Division

5 ft interval  
FILE COPY  
Inspection and Mapping

LOS ANGELES, CALIF.  
Edition of 1928  
reprinted 1931

NOV 7 1949 3240