



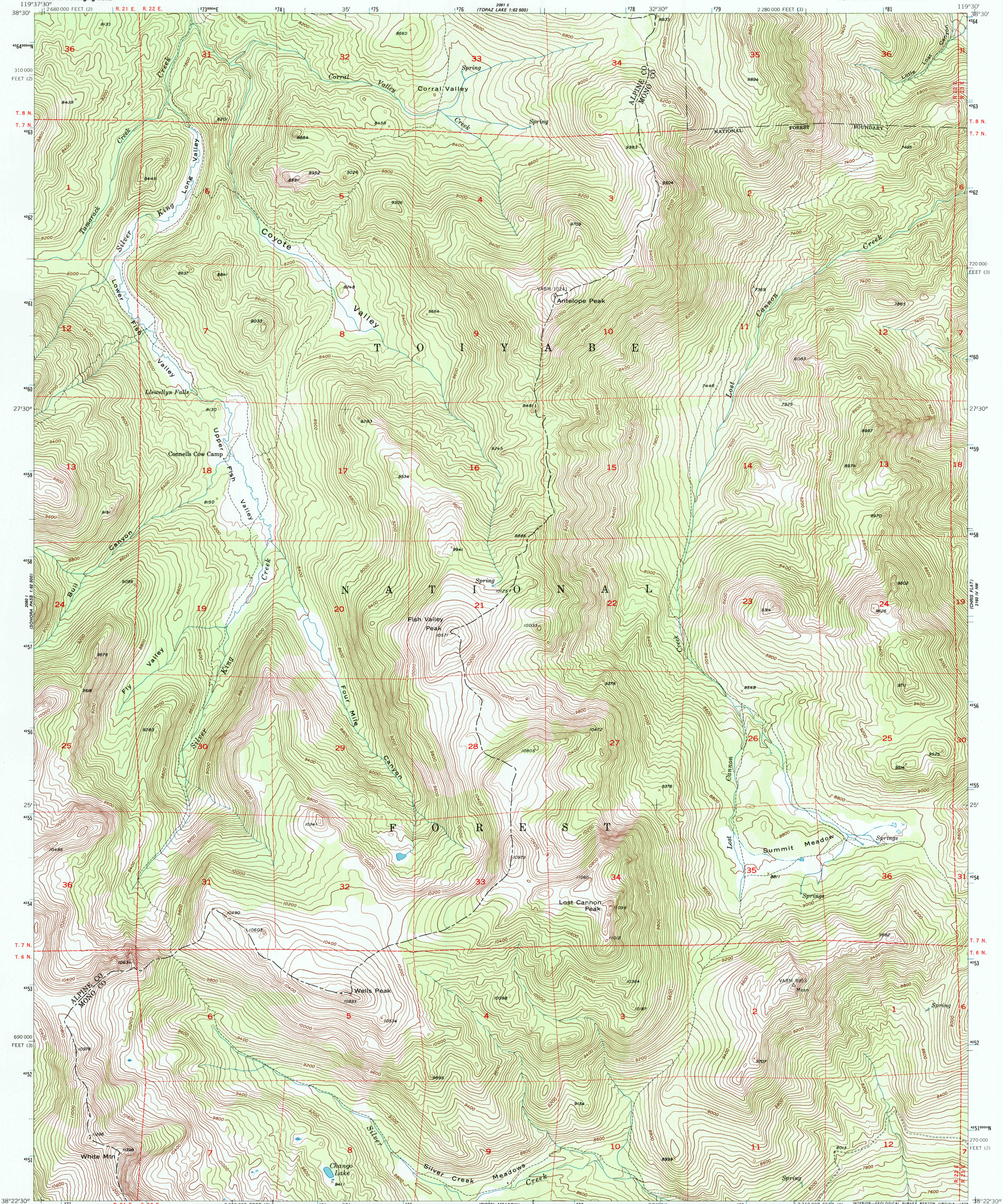
U.S. DEPARTMENT OF THE INTERIOR
U.S. GEOLOGICAL SURVEY

LOST CANNON PEAK QUADRANGLE

CALIFORNIA

7.5 MINUTE SERIES (TOPOGRAPHIC)

NE/4 SONORA PASS 15' QUADRANGLE



Mapped, edited, and published by the Geological Survey

Control by USGS

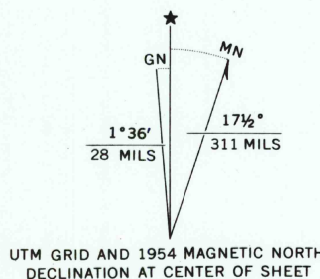
Topography from aerial photographs by multiplex methods
Aerial photographs taken 1953. Field checked 1954

Polyconic projection: 1927 North American Datum
10,000-foot grid based on California coordinate system
zones 2 and 3

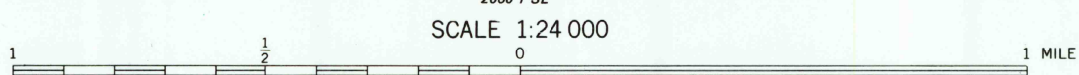
1000-meter Universal Transverse Mercator grid ticks
zone 11, shown in blue

To place on the predicted North American Datum 1983
move the projection lines 12 meters north and
87 meters east as shown by dashed corner ticks

Dashed land lines indicate approximate locations



UTM GRID AND 1954 MAGNETIC NORTH
DECLINATION AT CENTER OF SHEET



SCALE 1:24 000

CONTOUR INTERVAL 40 FEET
NATIONAL GEODETIC VERTICAL DATUM OF 1929

THIS MAP COMPLIES WITH NATIONAL MAP ACCURACY STANDARDS
FOR SALE BY U.S. GEOLOGICAL SURVEY, P.O. BOX 25286, DENVER, COLORADO 80225
A FOLDER DESCRIBING TOPOGRAPHIC MAPS AND SYMBOLS IS AVAILABLE ON REQUEST



QUADRANGLE LOCATION

ROAD CLASSIFICATION

Unimproved dirt

LOST CANNON PEAK, CALIF.

NE/4 SONORA PASS 15' QUADRANGLE
N3822.5-W11930.7.5

1954
PHOTOINSPECTED 1974
DMA 2060 I NE-SERIES V895

Map photoinspected 1974
No major culture or drainage changes observed

