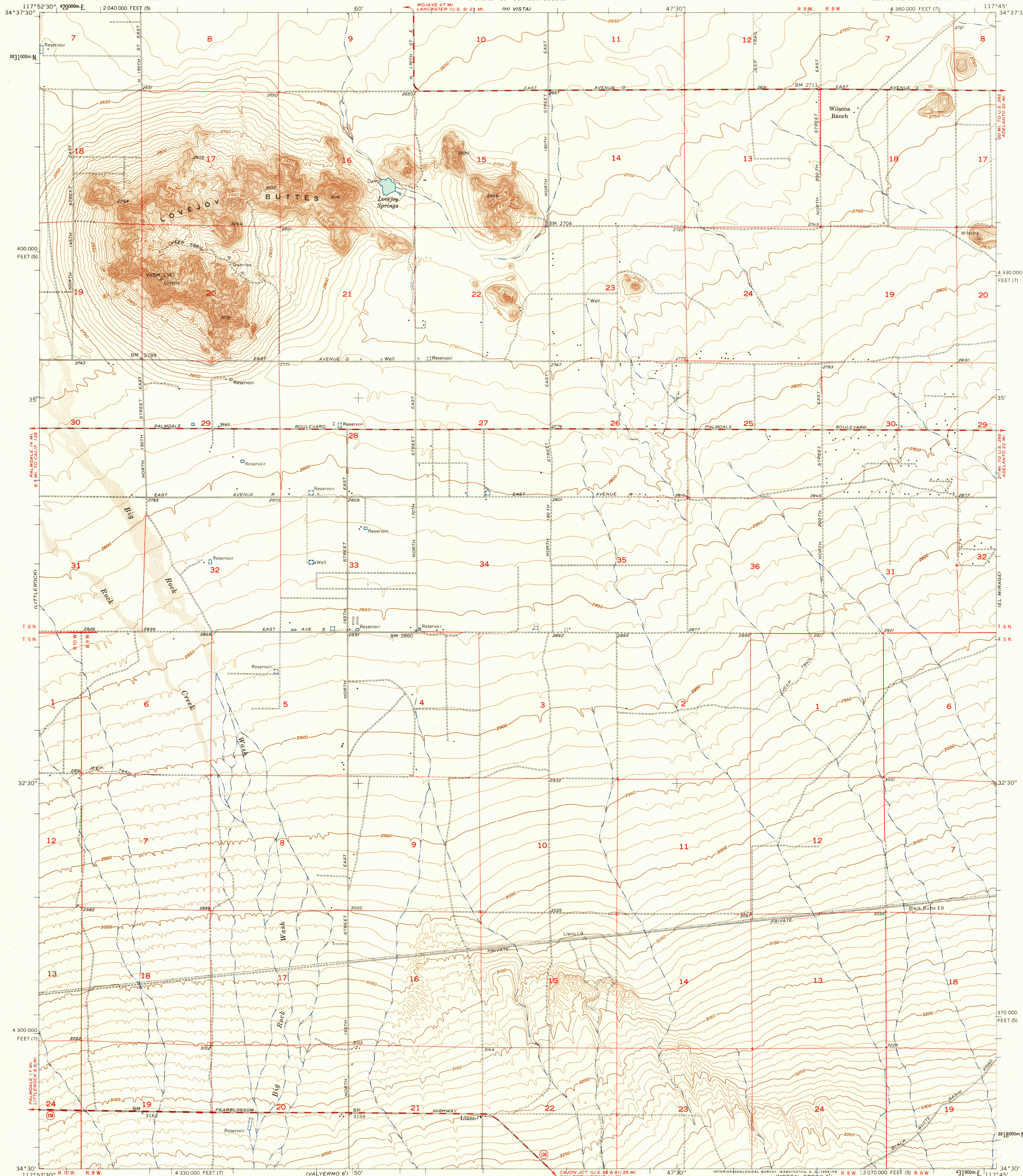


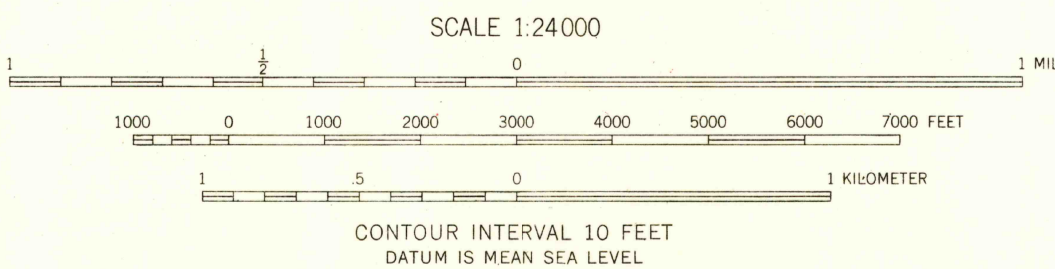
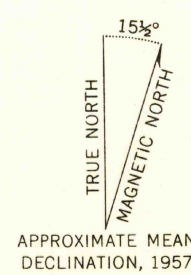
UNITED STATES
DEPARTMENT OF THE INTERIOR
GEOLOGICAL SURVEY

LOS ANGELES COUNTY
BOARD OF SUPERVISORS

LOVEJOY BUTTES QUADRANGLE
CALIFORNIA—LOS ANGELES CO.
7.5 MINUTE SERIES (TOPOGRAPHIC)
SE/4 ALPINE BUTTE 15' QUADRANGLE



Mapped, edited, and published by the Geological Survey
Control by USGS, USC&GS, and Los Angeles Co.
Topography by planetable surveys 1930
and by Kelsh plotter from aerial photographs
taken 1955. Field check 1957.
Polyconic projection. 1927 North American datum
10,000-foot grids based on California coordinate system,
zones 5 and 7
1000-meter Universal Transverse Mercator grid ticks,
zone 11, shown in blue



USGS
Historical File
Topographic Division



U.S.G.S.
FILE COPY
TOPOGRAPHIC DIVISION

ROAD CLASSIFICATION
Medium-duty ——— Light-duty ———
Unimproved dirt ———
State Route

LOVEJOY BUTTES, CALIF.
SE/4 ALPINE BUTTE 15' QUADRANGLE
N3430—W11745/7.5

1957

THIS MAP COMPLIES WITH NATIONAL MAP ACCURACY STANDARDS
FOR SALE BY U. S. GEOLOGICAL SURVEY, DENVER 2, COLORADO OR WASHINGTON 25, D. C.
A FOLDER DESCRIBING TOPOGRAPHIC MAPS AND SYMBOLS IS AVAILABLE ON REQUEST

JUL 9 - 1958
2895