

Casa Desertal

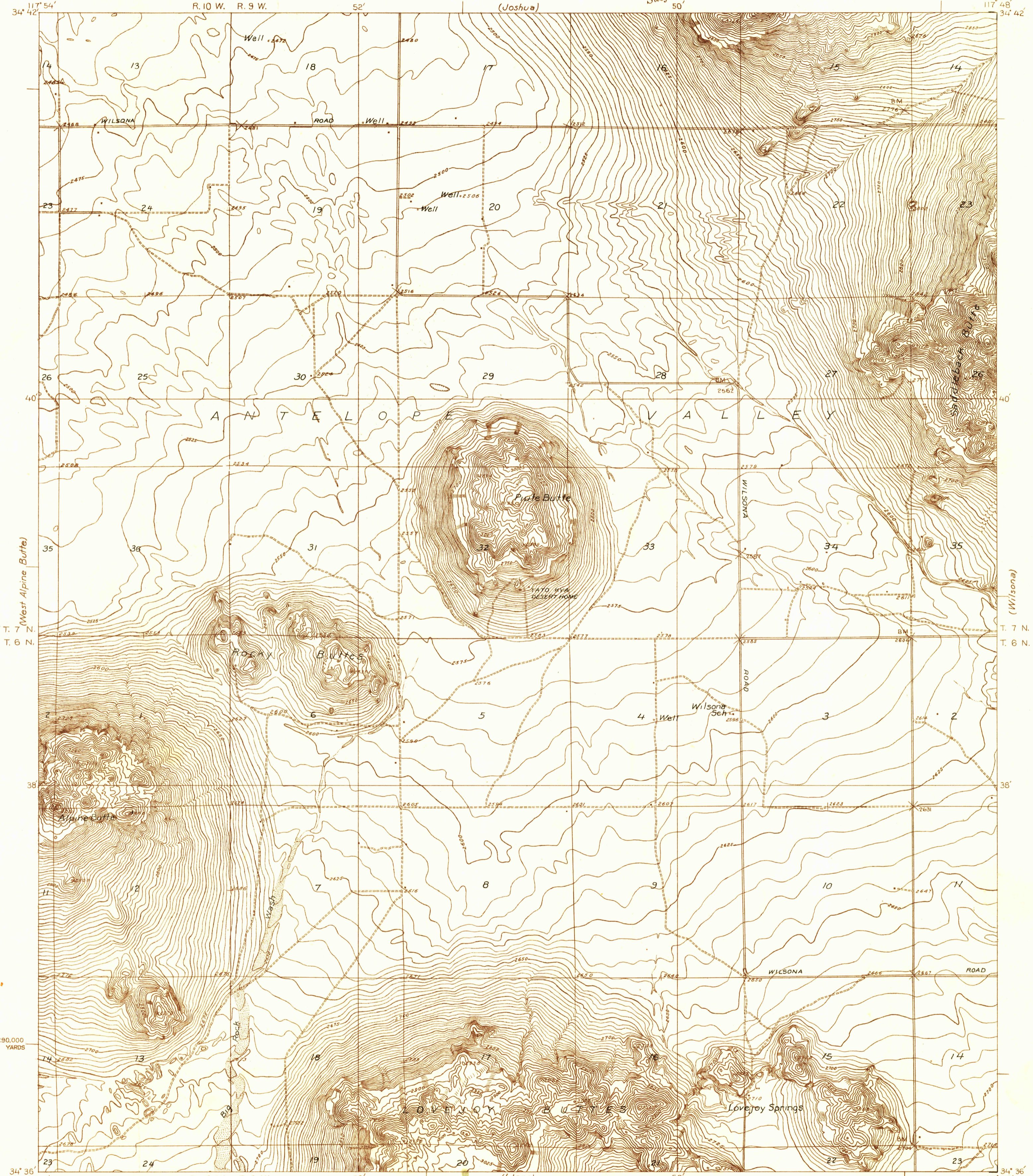
U. S. G. S.  
FILE COPY  
Inspection and Editing.

108-N-III-W/2  
LOS ANGELES COUNTY, CALIFORNIA  
BOARD OF SUPERVISORS  
HENRY W. WRIGHT, CHAIRMAN  
J. E. ROCKHOLD, COUNTY SURVEYOR

Advance sheet  
Subject to correction

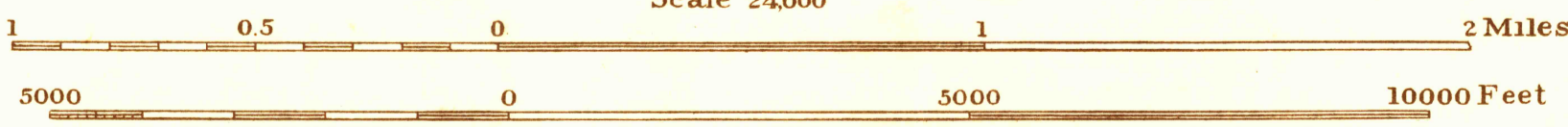
CALIFORNIA  
(LOS ANGELES COUNTY)  
LOVEJOY SPRINGS QUADRANGLE

DEPARTMENT OF THE INTERIOR,  
U. S. GEOLOGICAL SURVEY

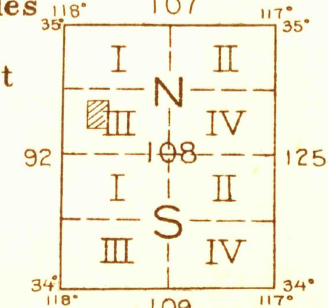


1,290,000  
YARDS

Scale 24,000  
1,315,000 YARDS



Contour interval 20 feet  
Datum is mean sea level



LOVEJOY SPRINGS, CALIF.

USGS  
Historical File  
Topographic Division

TRUE NORTH  
MAGNETIC NORTH  
APPROXIMATE MEAN  
DECLINATION, 1980

H. H. Hodgeson, Division Engineer  
Topography by F. K. Van Zandt  
Control by U. S. Geological Survey  
Surveyed in 1930

(Little Rock)

(Black Butte)