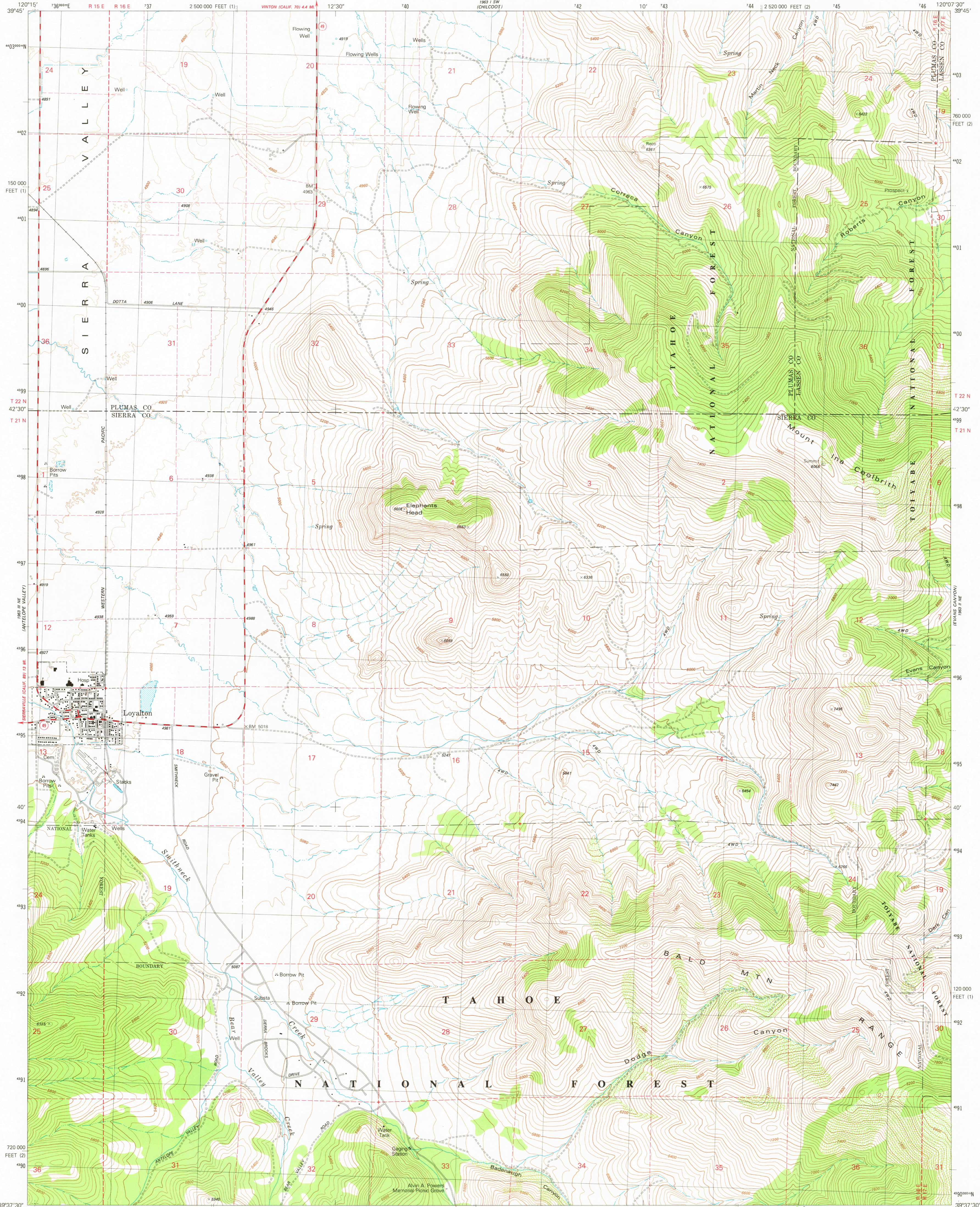
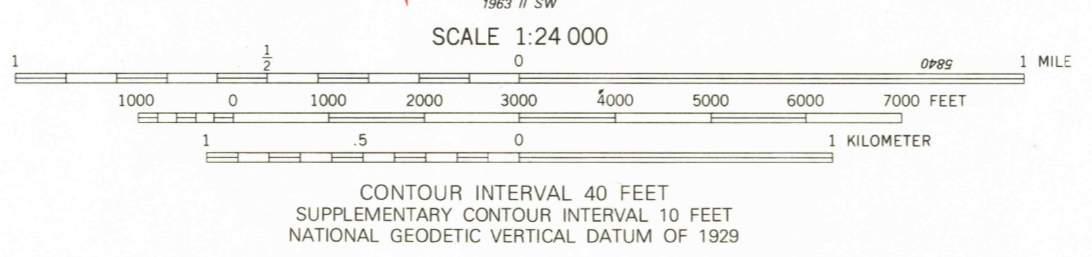
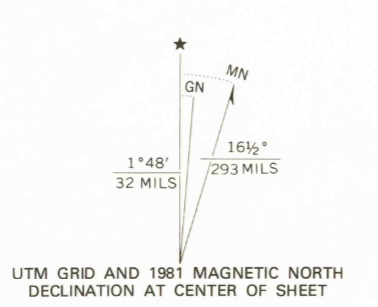


UNITED STATES
DEPARTMENT OF THE INTERIOR
GEOLOGICAL SURVEY

LOYALTON QUADRANGLE
CALIFORNIA
7.5 MINUTE SERIES (TOPOGRAPHIC)
NW/4 LOYALTON 15' QUADRANGLE



Mapped, edited, and published by the Geological Survey
Control by USGS, NOS/NOAA, and U.S. Forest Service
Topography by photogrammetric methods from aerial photographs taken 1974. Field checked 1975
Map edited 1981
Projection: California coordinate system, zone 2 (Lambert conformal conic)
10,000-foot grid ticks based on California coordinate system, zones 2 and 1
1000-meter Universal Transverse Mercator grid, zone 10 1927 North American Datum
To place on the predicted North American Datum 1983 move the projection lines 15 meters north and 88 meters east as shown by dashed corner ticks
There may be private inholdings within the boundaries of the National or State reservations shown on this map



ROAD CLASSIFICATION

Primary highway, hard surface	Light-duty road, hard or improved surface
Secondary highway, hard surface	Unimproved road
Interstate Route	U.S. Route
	State Route



LOYALTON, CALIF.
NW/4 LOYALTON 15' QUADRANGLE
N3937.5 - W12007.5/7.5
1981
DMA 1963 II NW-SERIES V885

NOV 22 1982

2150