

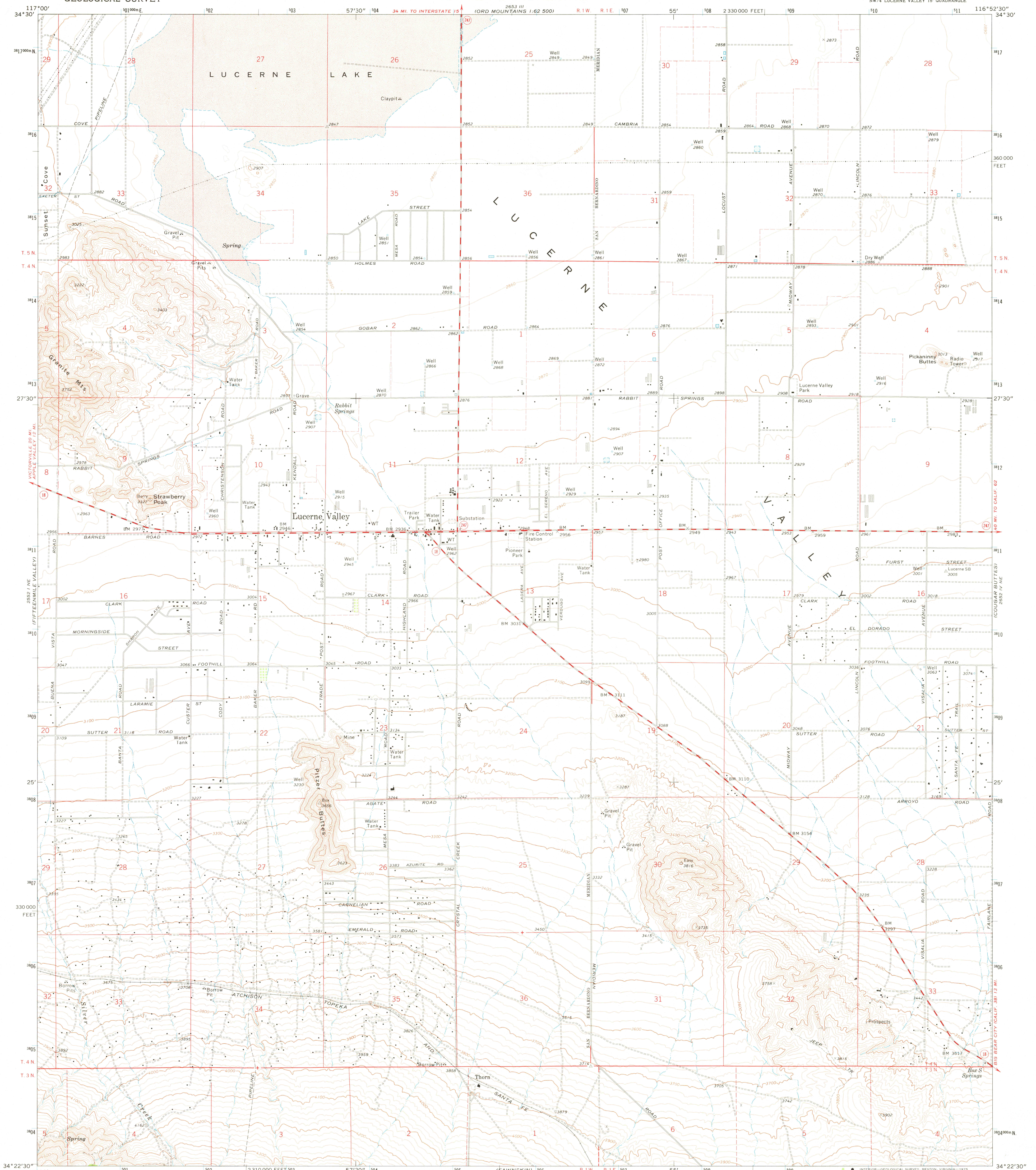
FAIRVIEW VALLEY
2652 I SE

2652 III
2652 IV
2652 V
2652 VI
2652 VII
2652 VIII
2652 IX
2652 X
2652 XI
2652 XII
2652 XIII
2652 XIV
2652 XV
2652 XVI
2652 XVII
2652 XVIII
2652 XIX
2652 XX
2652 XXI
2652 XXII
2652 XXIII
2652 XXIV
2652 XXV
2652 XXVI
2652 XXVII
2652 XXVIII
2652 XXIX
2652 XXX
2652 XXXI
2652 XXXII
2652 XXXIII
2652 XXXIV
2652 XXXV
2652 XXXVI
2652 XXXVII
2652 XXXVIII
2652 XXXIX
2652 XL
2652 XLI
2652 XLII
2652 XLIII
2652 XLIV
2652 XLV
2652 XLVI
2652 XLVII
2652 XLVIII
2652 XLIX
2652 L
2652 LI
2652 LII
2652 LIII
2652 LIV
2652 LV
2652 LVI
2652 LVII
2652 LVIII
2652 LIX
2652 LX
2652 LXI
2652 LXII
2652 LXIII
2652 LXIV
2652 LXV
2652 LXVI
2652 LXVII
2652 LXVIII
2652 LXIX
2652 LXX
2652 LXXI
2652 LXXII
2652 LXXIII
2652 LXXIV
2652 LXXV
2652 LXXVI
2652 LXXVII
2652 LXXVIII
2652 LXXIX
2652 LXXX
2652 LXXXI
2652 LXXXII
2652 LXXXIII
2652 LXXXIV
2652 LXXXV
2652 LXXXVI
2652 LXXXVII
2652 LXXXVIII
2652 LXXXIX
2652 XL

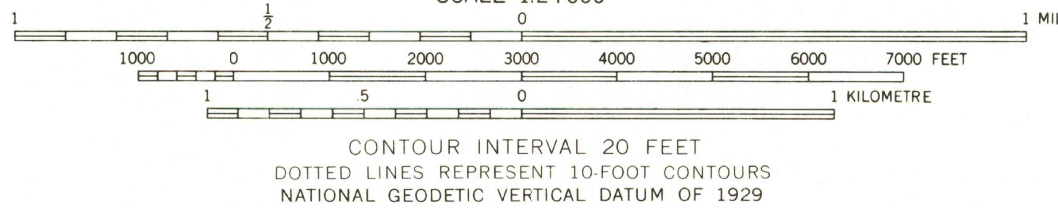
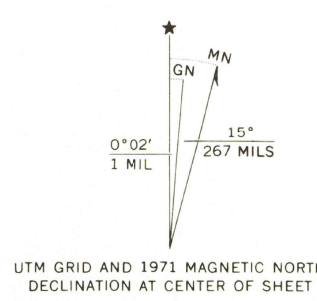
UNITED STATES
DEPARTMENT OF THE INTERIOR
GEOLOGICAL SURVEY

STATE OF CALIFORNIA
DEPARTMENT OF WATER RESOURCES

LUCERNE VALLEY QUADRANGLE
CALIFORNIA—SAN BERNARDINO CO.
7.5 MINUTE SERIES (TOPOGRAPHIC)
NW/4 LUCERNE VALLEY 15' QUADRANGLE



Mapped, edited, and published by the Geological Survey
Control by USGS and NOS/NOAA
Topography by photogrammetric methods from aerial
photographs taken 1969. Field checked 1971
Projection and 10,000-foot grid ticks: California coordinate
system, zone 5 (Lambert conformal conic)
1000-metre Universal Transverse Mercator grid ticks,
zone 11, shown in blue. 1927 North American datum
Fine red dashed lines indicate selected fence lines
Where omitted, land lines have not been established



ROAD CLASSIFICATION
Primary highway, hard surface
Secondary highway, hard surface
Unimproved road
Interstate Route
U. S. Route
State Route



LUCERNE VALLEY, CALIF.
NW/4 LUCERNE VALLEY 15' QUADRANGLE
N3422.5-W11652.5/7.5

1971
AMS 2652 IV NW-SERIES V895

THIS MAP COMPLIES WITH NATIONAL MAP ACCURACY STANDARDS
FOR SALE BY U. S. GEOLOGICAL SURVEY, DENVER, COLORADO 80225, OR RESTON, VIRGINIA 22092
A FOLDER DESCRIBING TOPOGRAPHIC MAPS AND SYMBOLS IS AVAILABLE ON REQUEST

APR 17 1975

2652 I SE
2652 II SE
2652 III SE
2652 IV SE
2652 V SE
2652 VI SE
2652 VII SE
2652 VIII SE
2652 IX SE
2652 X SE
2652 XI SE
2652 XII SE
2652 XIII SE
2652 XIV SE
2652 XV SE
2652 XVI SE
2652 XVII SE
2652 XVIII SE
2652 XIX SE
2652 XX SE
2652 XXI SE
2652 XXII SE
2652 XXIII SE
2652 XXIV SE
2652 XXV SE
2652 XXVI SE
2652 XXVII SE
2652 XXVIII SE
2652 XXIX SE
2652 XXX SE
2652 XXXI SE
2652 XXXII SE
2652 XXXIII SE
2652 XXXIV SE
2652 XXXV SE
2652 XXXVI SE
2652 XXXVII SE
2652 XXXVIII SE
2652 XXXIX SE
2652 XL SE