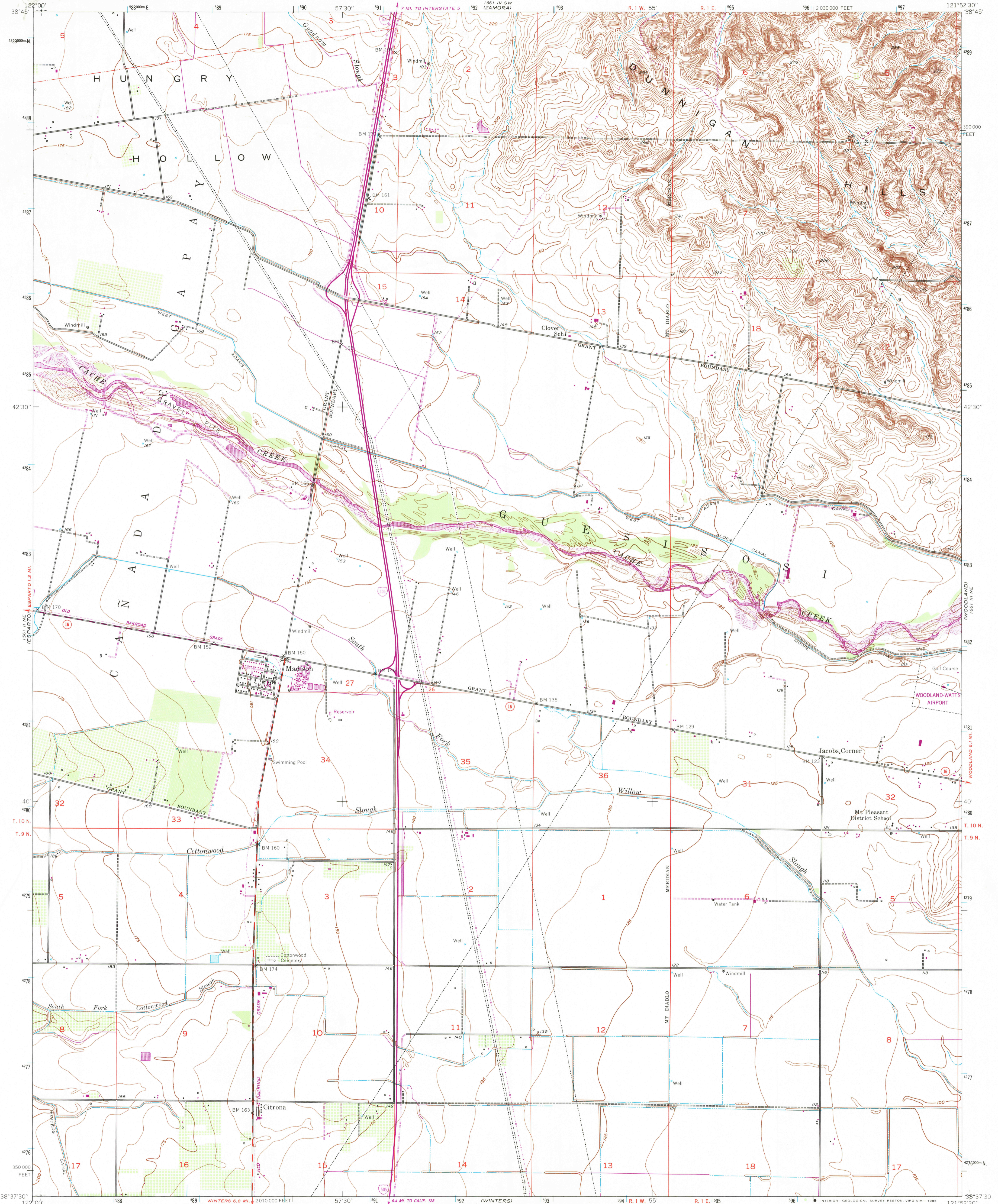


186 IV SE  
ELDORADO BEND

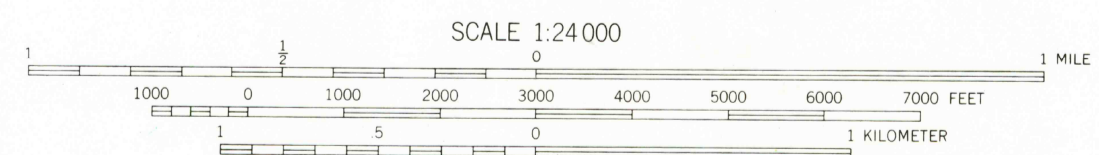
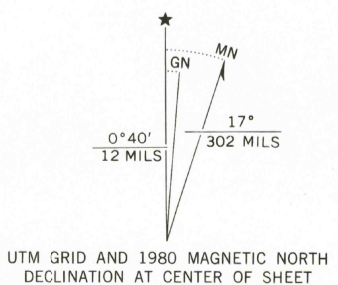


USGS/NDM RESEARCH  
OCT 18 1985  
REFERENCE COLLECTION

USGS/NDM HISTORICAL MAPS ARCHIVES

Mapped, edited, and published by the Geological Survey

Control by USGS and USC&GS  
Culture and drainage compiled from aerial photographs taken 1949. Topography by plane-table methods 1905 and 1953  
Polyconic projection  
10,000-foot grid based on California coordinate system, zone 2  
1000-meter Universal Transverse Mercator grid ticks, zone 10, shown in blue. 1927 North American datum  
To place on the predicted North American Datum 1983 move the projection lines 15 meters north and 93 meters east as shown by dashed corner ticks  
Revisions shown in purple and woodland compiled from aerial photographs taken 1978 and other source data  
This information not field checked. Map edited 1980



CONTOUR INTERVAL 5 FEET  
NATIONAL GEODETIC VERTICAL DATUM OF 1929



ROAD CLASSIFICATION  
Heavy-duty ——— Light-duty ———  
Medium-duty ——— Unimproved dirt ———  
Interstate Route ——— Slate Route ———

MADISON, CALIF.  
NW/4 WOODLAND 15' QUADRANGLE  
38121-F8-TF-024

1953  
PHOTOREVISED 1980  
DMA 1661 III NW—SERIES V895

THIS MAP COMPLIES WITH NATIONAL MAP ACCURACY STANDARDS  
FOR SALE BY U. S. GEOLOGICAL SURVEY, DENVER, COLORADO 80225, OR RESTON, VIRGINIA 22092  
A FOLDER DESCRIBING TOPOGRAPHIC MAPS AND SYMBOLS IS AVAILABLE ON REQUEST