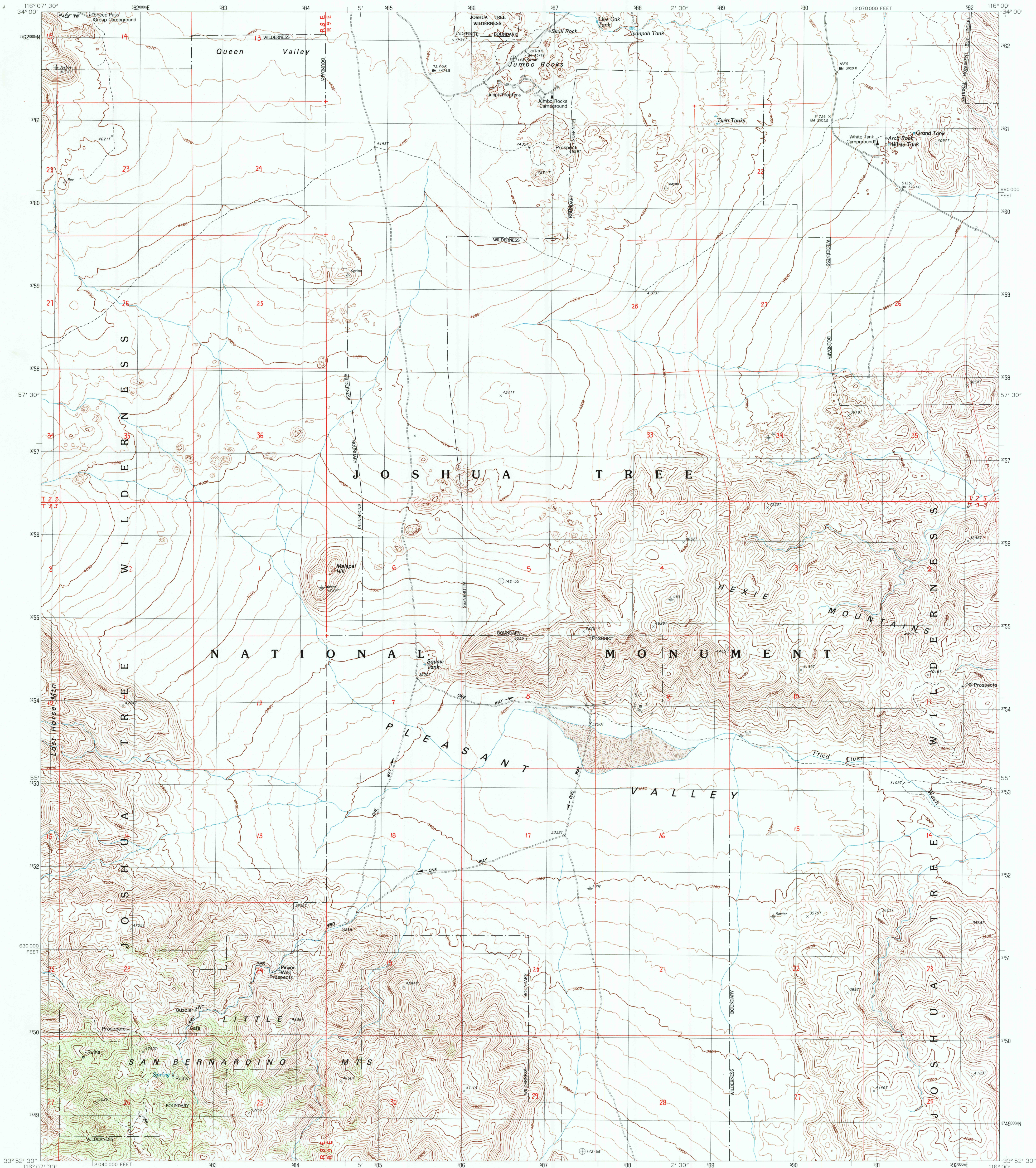


UNITED STATES
DEPARTMENT OF THE INTERIOR
GEOLOGICAL SURVEY

MALAPAI HILL QUADRANGLE
CALIFORNIA—RIVERSIDE CO.
7.5 MINUTE SERIES (TOPOGRAPHIC)



PRODUCED BY THE UNITED STATES GEOLOGICAL SURVEY
CONTROL BY USGS, NOS/NOAA/USCE
COMPILED FROM AERIAL PHOTOGRAPHS TAKEN 1984
FIELD CHECKED 1985. MAP EDITED 1988
PROJECTION LAMBERT CONFORMAL CONIC
GRID: 1000-METER UNIVERSAL TRANSVERSE MERCATOR ZONE 11
11,000-FOOT STATE GRID TICKS CALIFORNIA, ZONE 6
UTM GRID DECLINATION 0°31' EAST
1980 MAGNETIC NORTH DECLINATION 14° EAST
VERTICAL DATUM NATIONAL GEODETIC VERTICAL DATUM OF 1999
HORIZONTAL DATUM 1927 NORTH AMERICAN DATUM
To place on the predicted North American Datum of 1983,
move the projection lines as shown by dashed corner ticks
(78 meters east)
There may be private inholdings within the boundaries of any
Federal and State Reservations shown on this map.
No distinction made between houses, barns, and other buildings
Where omitted, land lines have not been established or are not
shown because of insufficient data

PROVISIONAL MAP
Produced from original
manuscript drawings. Infor-
mation shown as of date of
photography.

SCALE 1:24 000
1 000 0 1000 2000
KILOMETERS
1 0 1000 2000
MILES
1000 0 1000 2000 3000 4000 5000 6000 7000 8000 9000 10 000
FEET
CONTOUR INTERVAL 40 FEET
CONTROL ELEVATIONS SHOWN TO THE NEAREST 0.1 FOOT
OTHER ELEVATIONS SHOWN TO THE NEAREST FOOT
To convert meters to feet multiply by 3.2808
To convert feet to meters multiply by 0.3048
THIS MAP COMPLIES WITH NATIONAL MAP ACCURACY STANDARDS
FOR SALE BY U. S. GEOLOGICAL SURVEY, DENVER, COLORADO 80225. OR RESTON, VIRGINIA 22092

ROAD LEGEND
Improved Road
Unimproved Road
Trail
Interstate Route U.S. Route State Route
QUADRANGLE LOCATION
CALIF.
ADJOINING 7.5' QUADRANGLE NAMES
1 2 3 4 5 6 7 8
1 Indian Cove
2 Queen Mtn.
3 Twentynine Palms
4 Keys View
5 Fried Liver Wash
6 West Berdoo Canyon
7 Rockhouse Canyon
8 Washington Wash
MALAPAI HILL, CALIF.
PROVISIONAL EDITION 1988
33116-H1-TF-024