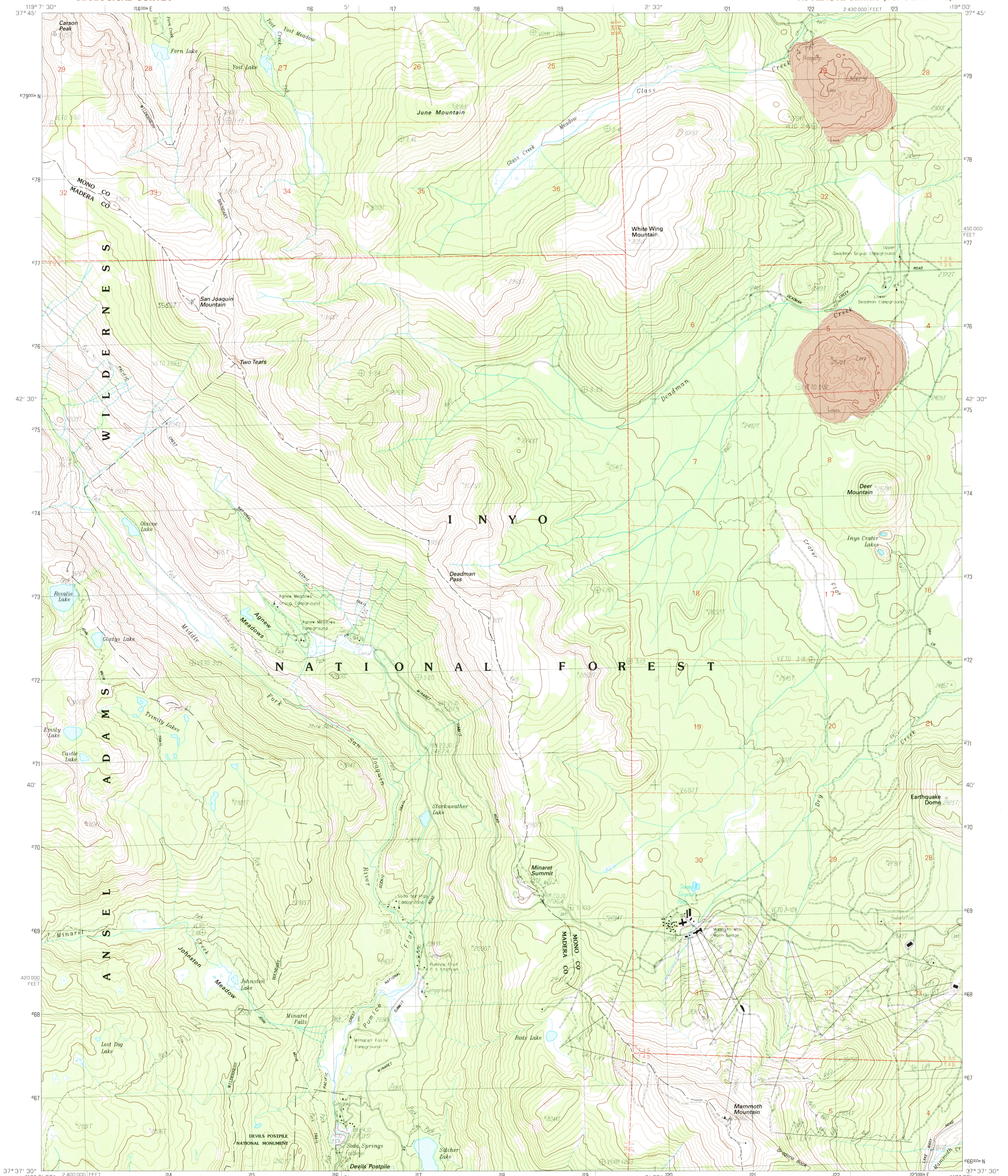


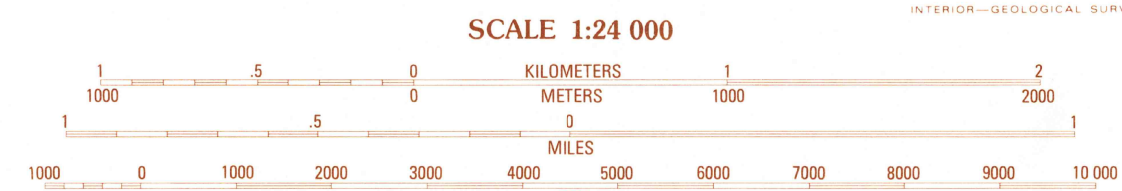
UNITED STATES
DEPARTMENT OF THE INTERIOR
GEOLOGICAL SURVEY

MAMMOTH MTN. QUADRANGLE
CALIFORNIA
7.5 MINUTE SERIES (TOPOGRAPHIC)



PRODUCED BY THE UNITED STATES GEOLOGICAL SURVEY
CONTROL BY USGS, NOS/NOAA
COMPILED FROM AERIAL PHOTOGRAPHS TAKEN 1975 AND 1979
FIELD CHECKED 1980 MAP EDITED 1984
PROJECTION UNIVERSAL TRANSVERSE MERCATOR
GRID: 1000-METER UNIVERSAL TRANSVERSE MERCATOR ZONE 11
10,000-FOOT STATE GRID TICS CALIFORNIA, ZONE 3
UTM GRID DECLINATION 1°16' WEST
1980 MAGNETIC NORTH DECLINATION 15°30' EAST
VERTICAL DATUM, NATIONAL GEODETIC VERTICAL DATUM OF 1929
HORIZONTAL DATUM 1927 NORTH AMERICAN DATUM (NAD 27)
The difference between NAD 27 and North American
Datum of 1983 (NAD 83) for 7.5 minute intersections is
given in USGS Bulletin 1875. The NAD 83 is shown by
dashed corner ticks.
There may be private inholdings within the boundaries of
any Federal and State Reservations shown on this map
Where omitted, land lines have not been established

PROVISIONAL MAP
Produced from original
manuscript drawings. Informa-
tion shown as of date of
field check.



CONTOUR INTERVAL 20 METERS
SUPPLEMENTARY CONTOUR INTERVAL 10 METERS
CONTROL ELEVATIONS SHOWN TO THE NEAREST 0.1 METER
OTHER ELEVATIONS SHOWN TO THE NEAREST METER
To convert meters to feet multiply by 3.2808
To convert feet to meters multiply by 0.3048

THIS MAP COMPLIES WITH NATIONAL MAP ACCURACY STANDARDS
FOR SALE BY U.S. GEOLOGICAL SURVEY, DENVER COLORADO 80225, OR RESTON, VIRGINIA 22092



1	2	3	Koip Peak
4	5	6	June Lake
7	8	9	Crestview
10	11	12	Old Mammoth
13	14	15	Cattle Mtn.
16	17	18	Bloody Mtn.

ADJOINING 7.5 QUADRANGLE NAMES

CONTOURS AND ELEVATIONS IN METERS
ROAD LEGEND

Improved Road.....
Unimproved Road.....
Trail.....
Interstate Route U.S. Route State Route

MAMMOTH MTN., CALIF.
PROVISIONAL EDITION 1984

37119-F1-TM-024

