

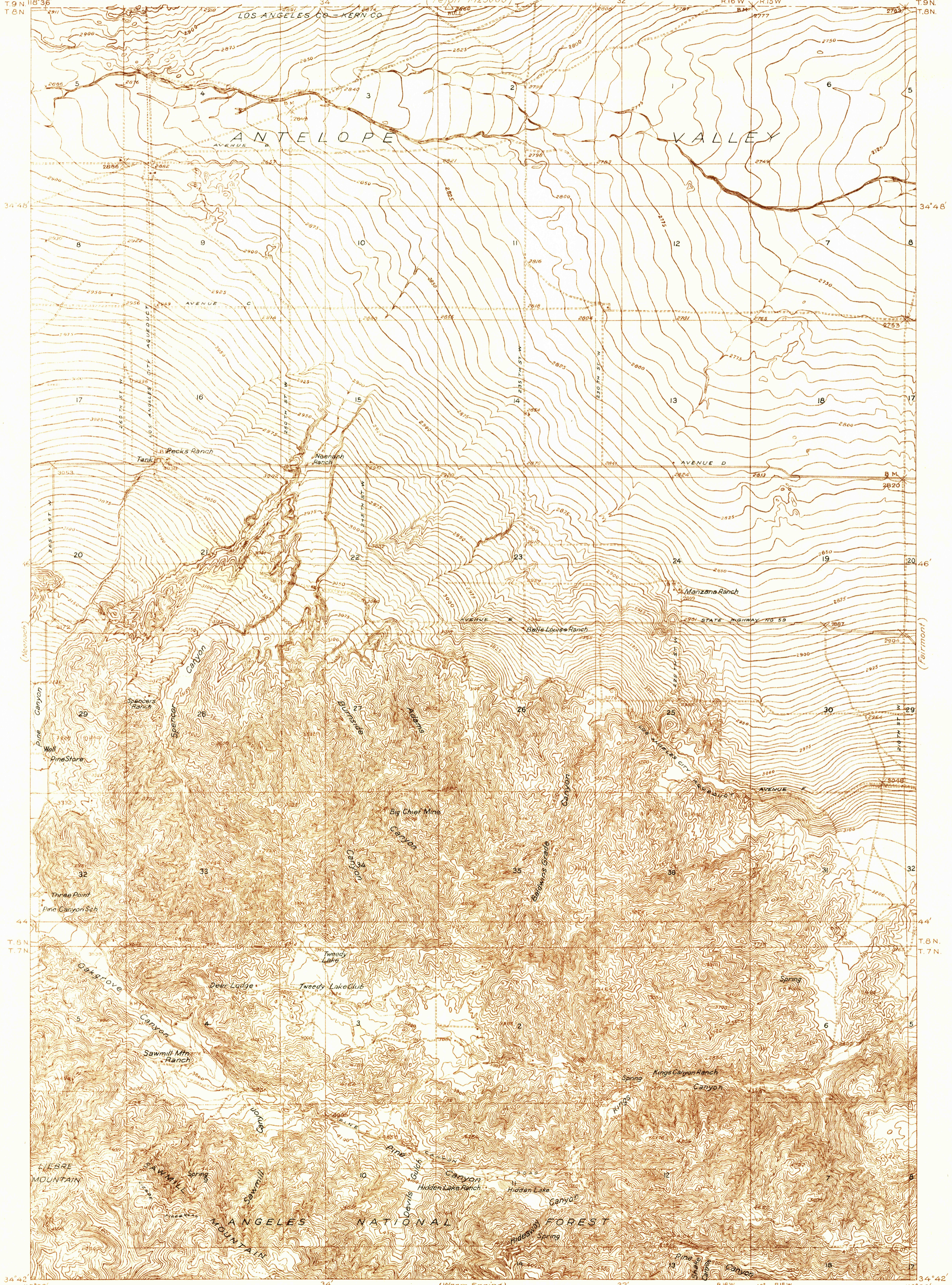
DEPARTMENT OF THE INTERIOR
U. S. GEOLOGICAL SURVEY

LOS ANGELES COUNTY, CALIFORNIA
BOARD OF SUPERVISORS
JOHN R. QUINN, CHAIRMAN
J. E. ROCKHOLD, COUNTY SURVEYOR
(Tejon 1125000)

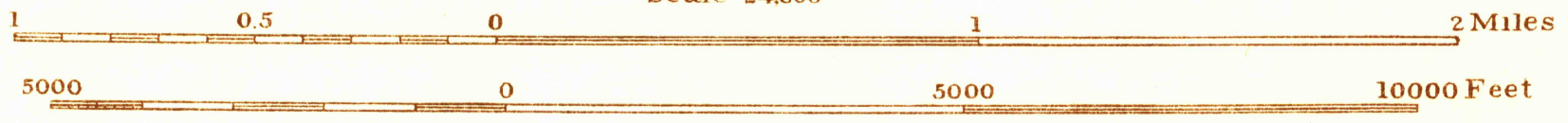
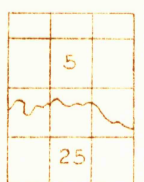
CALIFORNIA
(LOS ANGELES COUNTY)
MANZANA QUADRANGLE

Advance sheet
Subject to correction

Elizabeth Lake
125000



H. H. Hodgesen, Division Engineer
Topography by R. W. Burchard
Control by U. S. Geological Survey
Surveyed in 1933



Scale 24,000
(Warm Spring)
Contour intervals 5 and 25 feet (see diagram)
Datum is mean sea level

APPROXIMATE MEAN DECLINATION, 1933

MANZANA, CALIF.

USGS
Historical File
Topographic Division