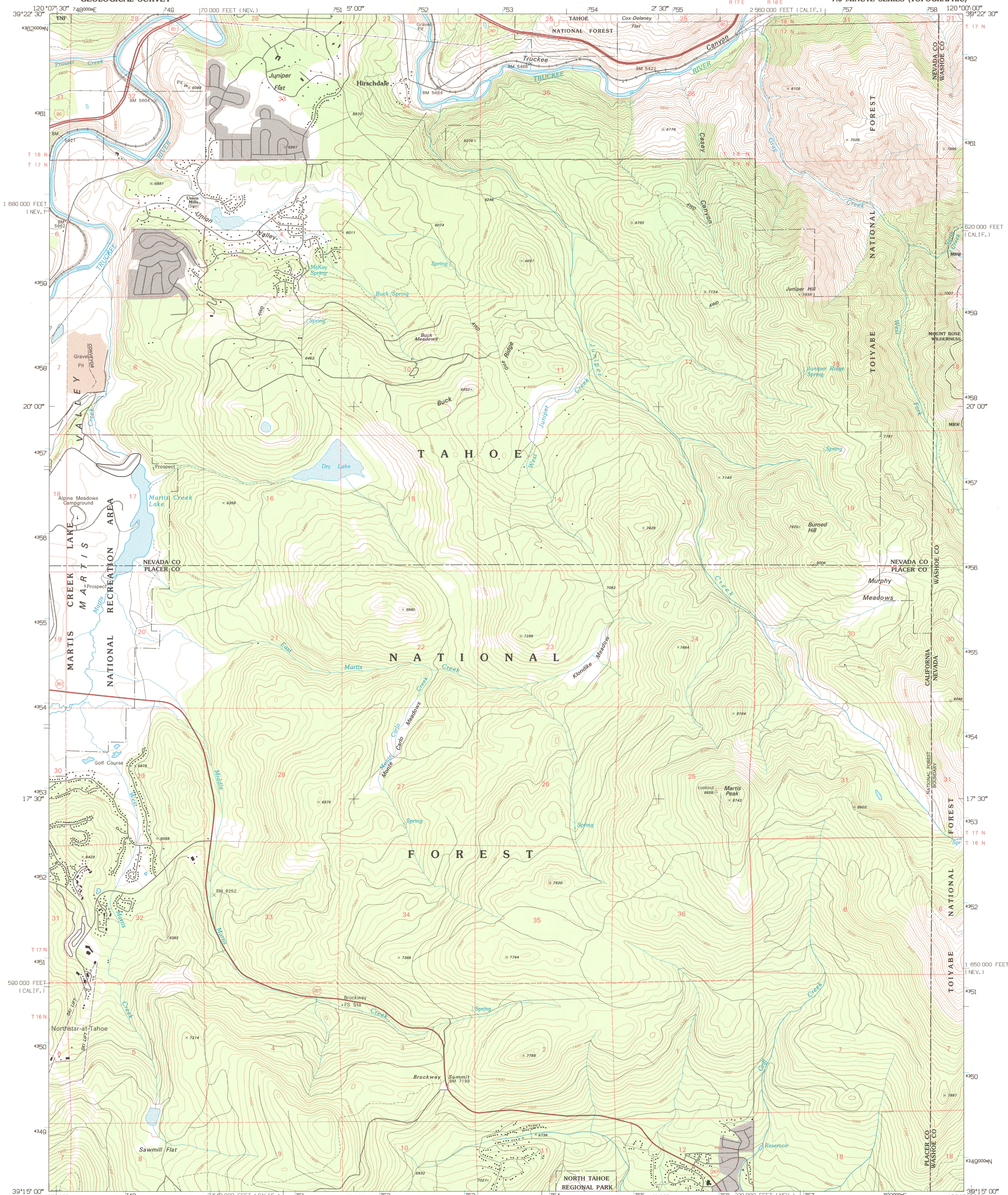
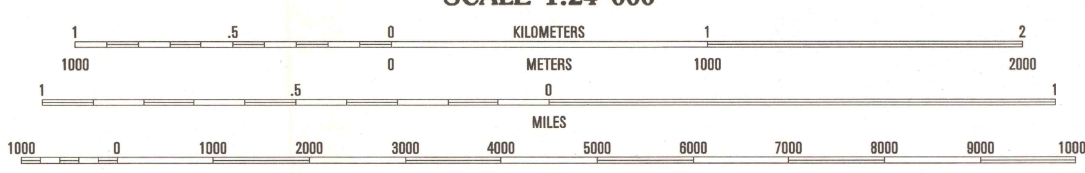
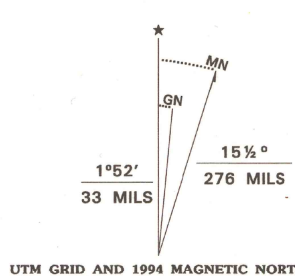


UNITED STATES
DEPARTMENT OF THE INTERIOR
GEOLOGICAL SURVEY

MARTIS PEAK QUADRANGLE
CALIFORNIA-NEVADA
7.5 MINUTE SERIES (TOPOGRAPHIC)



Produced by the United States Geological Survey
Control by USGS and NOS/NOAA
Compiled from imagery dated 1953. Revised from imagery dated 1952
PLSS current as of 1953. Survey control current as of 1955
Map edited 1994. Contours and land elevations have not been
revised and may conflict with other content
North American Datum of 1927 (NAD 27). Projection and blue
1000-meter Universal Transverse Mercator ticks, zone 10
10,000-foot grid ticks: California Coordinate System, zone 2
and Nevada Coordinate System, west zone
North American Datum of 1983 (NAD 83) is shown by dashed corner
ticks. The values of the shift between NAD 27 and NAD 83 for
7.5-minute intersections are obtainable from National Geodetic Survey
NADCON software
There may be private inholdings within the boundaries of the
National or State reservations shown on this map



CONTOUR INTERVAL 40 FEET
NATIONAL GEODETIC VERTICAL DATUM OF 1929
TO CONVERT FEET TO METERS MULTIPLY BY 0.3048
TO CONVERT METERS TO FEET MULTIPLY BY 3.2808

THIS MAP COMPLIES WITH NATIONAL MAP ACCURACY STANDARDS
FOR SALE BY U.S. GEOLOGICAL SURVEY
DENVER, COLORADO 80225, OR RESTON, VIRGINIA 22092
A FOLDER DESCRIBING TOPOGRAPHIC MAPS AND SYMBOLS IS AVAILABLE ON REQUEST



QUADRANGLE LOCATION

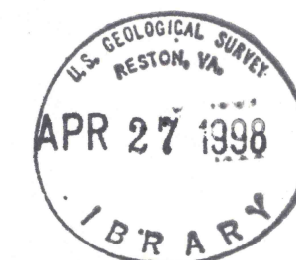
1	2	3	1 Hobart Mills
4	5	6	2 Boca
7	8	9	3 Mount Rose NW
			4 Truckee
			5 Mount Rose
			6 Tahoe City
			7 Kings Beach
			8 Marlette Lake

ROAD CLASSIFICATION
Primary highway Light-duty road, hard or
hard surface improved surface
Secondary highway Unimproved road
Interstate Route U.S. Route State Route

MARTIS PEAK, CA-NV
39120-C1-TF-024

1992

DMA 1962 I SE-SERIES V895



25 JAN 1995