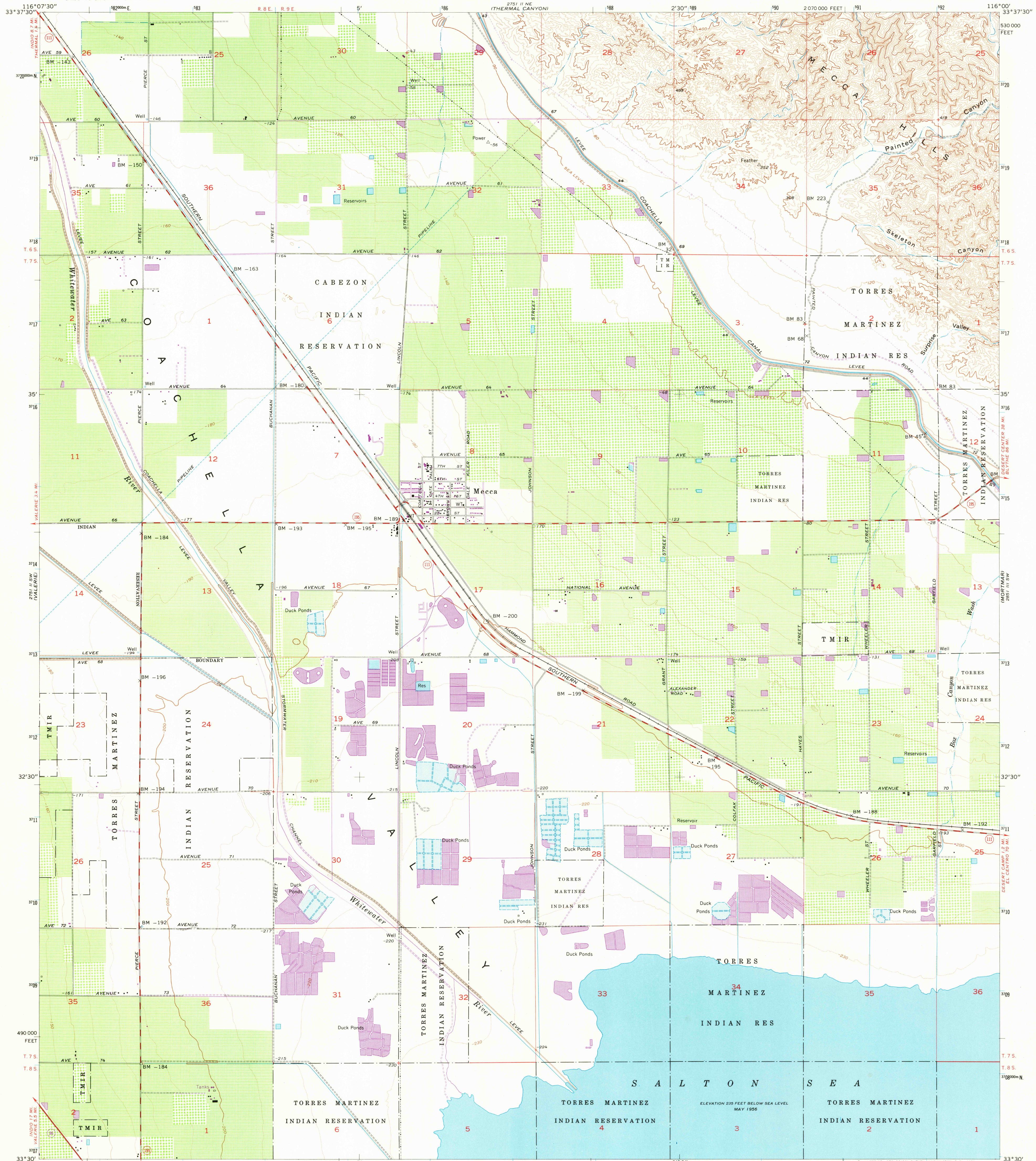


2011 II  
1:62,500  
COTTONWOOD SPRING

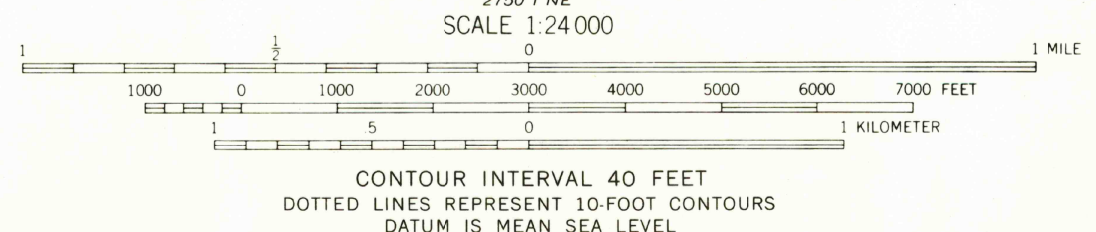
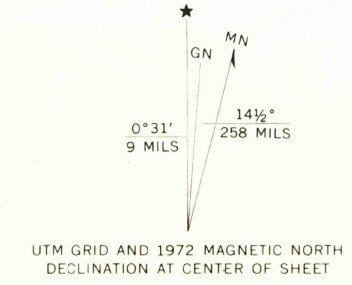


Mapped, edited, and published by the Geological Survey  
Control by USGS, USC&GS, USBR, and USCE

Topography from planetable surveys by USBR 1938 and  
USGS 1955 and by Wild A-8 from aerial photographs taken 1952

Polyconic projection. 1927 North American datum  
10,000-foot grid based on California coordinate system, zone 6  
1000-meter Universal Transverse Mercator grid ticks,  
zone 11, shown in blue

Revisions shown in purple and recompilation of  
woodland areas compiled from aerial photographs  
taken 1972. This information not field checked



ROAD CLASSIFICATION

Heavy-duty	Light-duty
Medium-duty	Unimproved dirt
U.S. Route	State Route



THIS MAP COMPLIES WITH NATIONAL MAP ACCURACY STANDARDS  
FOR SALE BY U.S. GEOLOGICAL SURVEY, DENVER, COLORADO 80225, OR WASHINGTON, D.C. 20242  
A FOLDER DESCRIBING TOPOGRAPHIC MAPS AND SYMBOLS IS AVAILABLE ON REQUEST

MECCA, CALIF.  
SE-4 COACHELLA 15' QUADRANGLE  
N3330—W11600/7.5

1955  
PHOTOREPRODUCED 1972  
AMS 2751 II SE—SERIES V895

3375