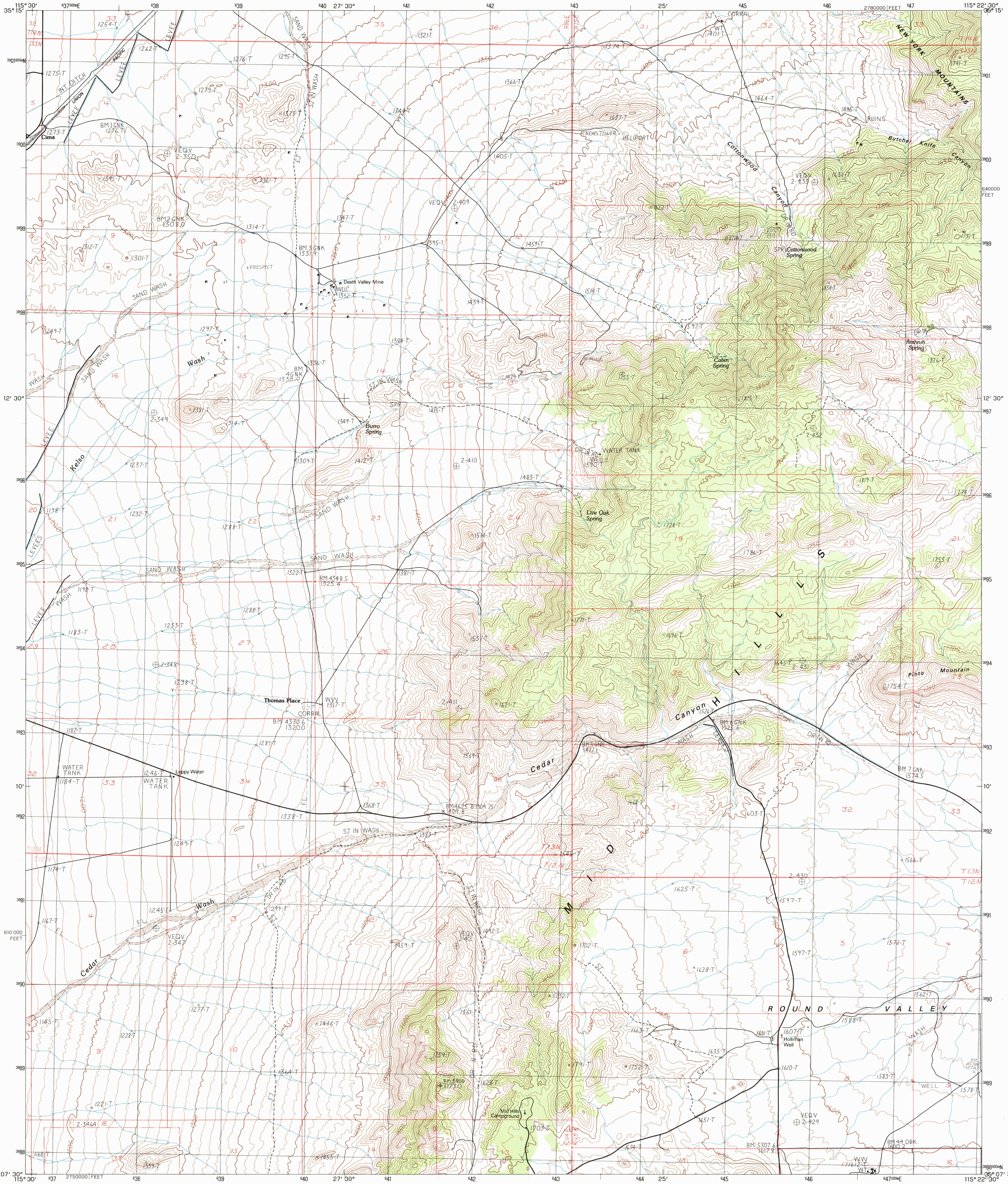


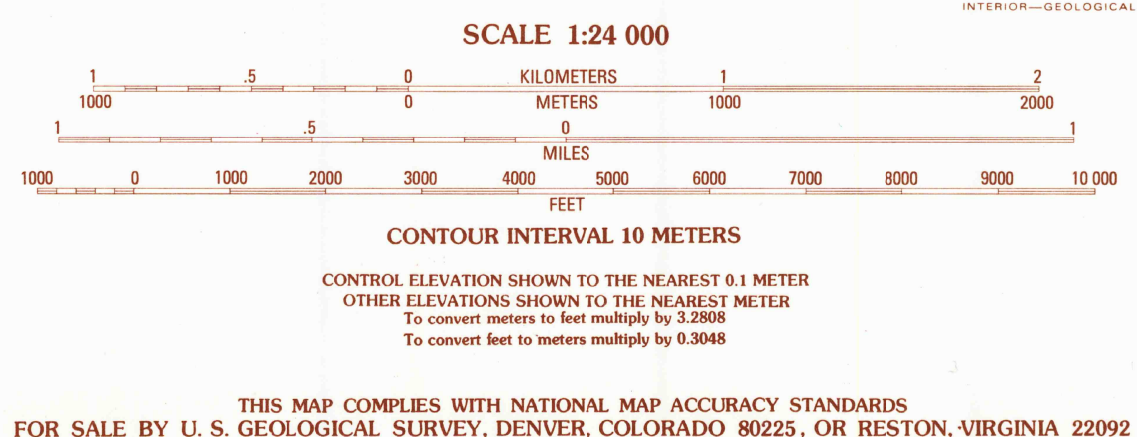
UNITED STATES
DEPARTMENT OF THE INTERIOR
GEOLOGICAL SURVEY

MID HILLS QUADRANGLE
CALIFORNIA-SAN BERNARDINO CO.
7.5 MINUTE SERIES (TOPOGRAPHIC)



PRODUCED BY THE UNITED STATES GEOLOGICAL SURVEY
CONTROL BYUSGS, NOS/NOAA
COMPILED FROM AERIAL PHOTOGRAPHS TAKEN1978
FIELD CHECKED1980 MAP EDITED1983
PROJECTIONUNIVERSAL TRANSVERSE MERCATOR
GRID: 1000-METER UNIVERSAL TRANSVERSE MERCATORZONE 11
10,000-FOOT STATE GRID TICKSCALIFORNIA, ZONE 5
UTM GRID DECLINATION0°54' EAST
1980 MAGNETIC NORTH DECLINATION14° EAST
VERTICAL DATUM, NATIONAL GEODETIC DATUM OF 1929
HORIZONTAL DATUM1927 NORTH AMERICAN DATUM
To place on the predicted North American Datum of 1983,
move the projection lines as shown by dashed corner ticks
(3 meters north / 76 meters east)
There may be private inholdings within the boundaries of any
Federal and State Reservations shown on this map

PROVISIONAL MAP
Produced from original
manuscript drawings. Information
shown as of date of
field check.



CONTOURS AND ELEVATIONS IN METERS

ROAD LEGEND

Improved Road.....
Unimproved Road.....
Trail.....
Interstate Route U.S. Route State Route

MID HILLS, CALIF.
PROVISIONAL EDITION 1983

35115-B4-TM-024

1	2	3
4	5	6
7	8	9

1 Cima Dome
2 Joshua
3 Ivanpah
4 Cima
5 Pinto Valley
6 Hayden
7 Columbia Mtn.
8 Woods Mountain

ADJOINING 7.5 QUADRANGLE NAMES