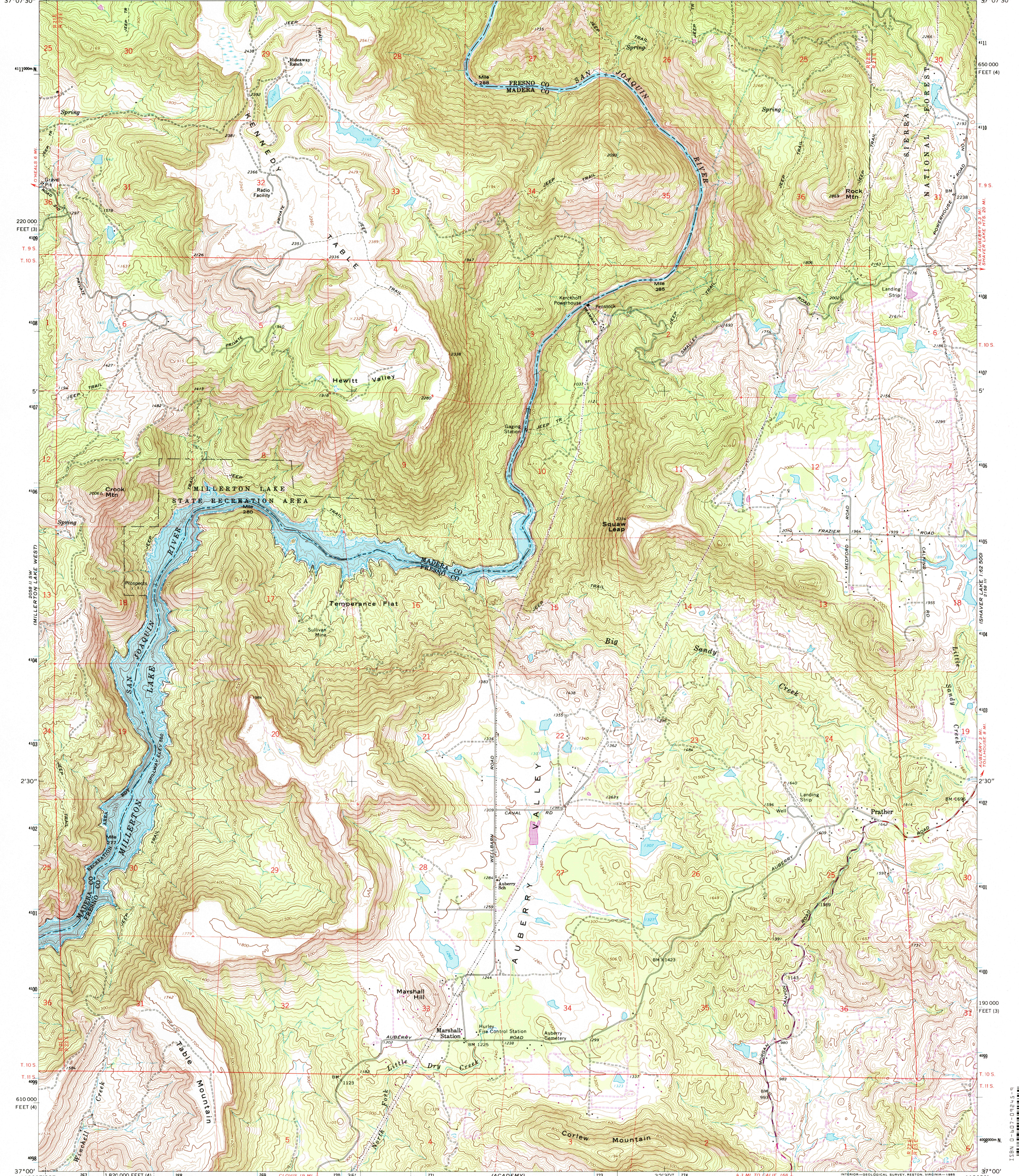
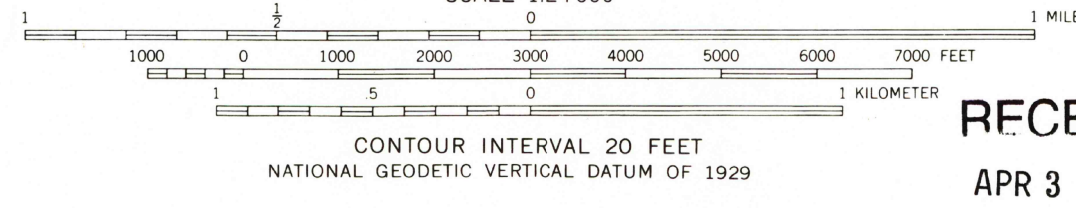
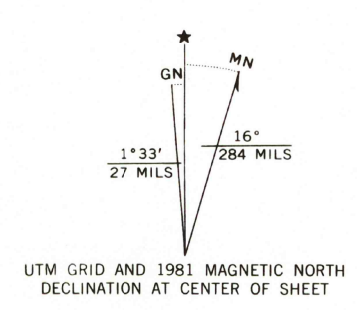


119°37'30" 767000m E 268 2 260 000 FEET (3) 269 2058 II NE (NORTH FORK) 271 272 2058 II NE (NORTH FORK) 273 774 32'30" 275 1850 000 FEET (4) 119°30' 37°07'30"



Mapped, edited, and published by the Geological Survey Control by USGS and NOS/NOAA Topography by photogrammetric methods from aerial photographs taken 1963. Field checked 1965 Underwater contours by Madera Irrigation District Polyconic projection. 1927 North American datum 10,000-foot grids based on California coordinate system, zones 4 and 3 1000-meter Universal Transverse Mercator grid ticks, zone 11, shown in blue To place on the predicted North American Datum 1983, move the projection lines 9 meters north and 87 meters east as shown by dashed corner ticks Areas covered by dashed light-blue pattern are subject to controlled inundation



RECEIVED APR 3 0 2002



ROAD CLASSIFICATION Medium-duty Light-duty Unimproved dirt

MILLERTON LAKE EAST, CALIF. SE/4 MILLERTON LAKE 15' QUADRANGLE 37119-A5-TF-024

THIS MAP COMPLIES WITH NATIONAL MAP ACCURACY STANDARDS FOR SALE BY U.S. GEOLOGICAL SURVEY, P.O. BOX 25286, DENVER, COLORADO 80225 A FOLDER DESCRIBING TOPOGRAPHIC MAPS AND SYMBOLS IS AVAILABLE ON REQUEST

Revisions shown in purple compiled from aerial photographs taken 1978 and other source data. This information not field checked. Map edited 1981

1965 PHOTOREVISED 1981 DMA 2058 II SE--SERIES V895



NUMBERS STATION