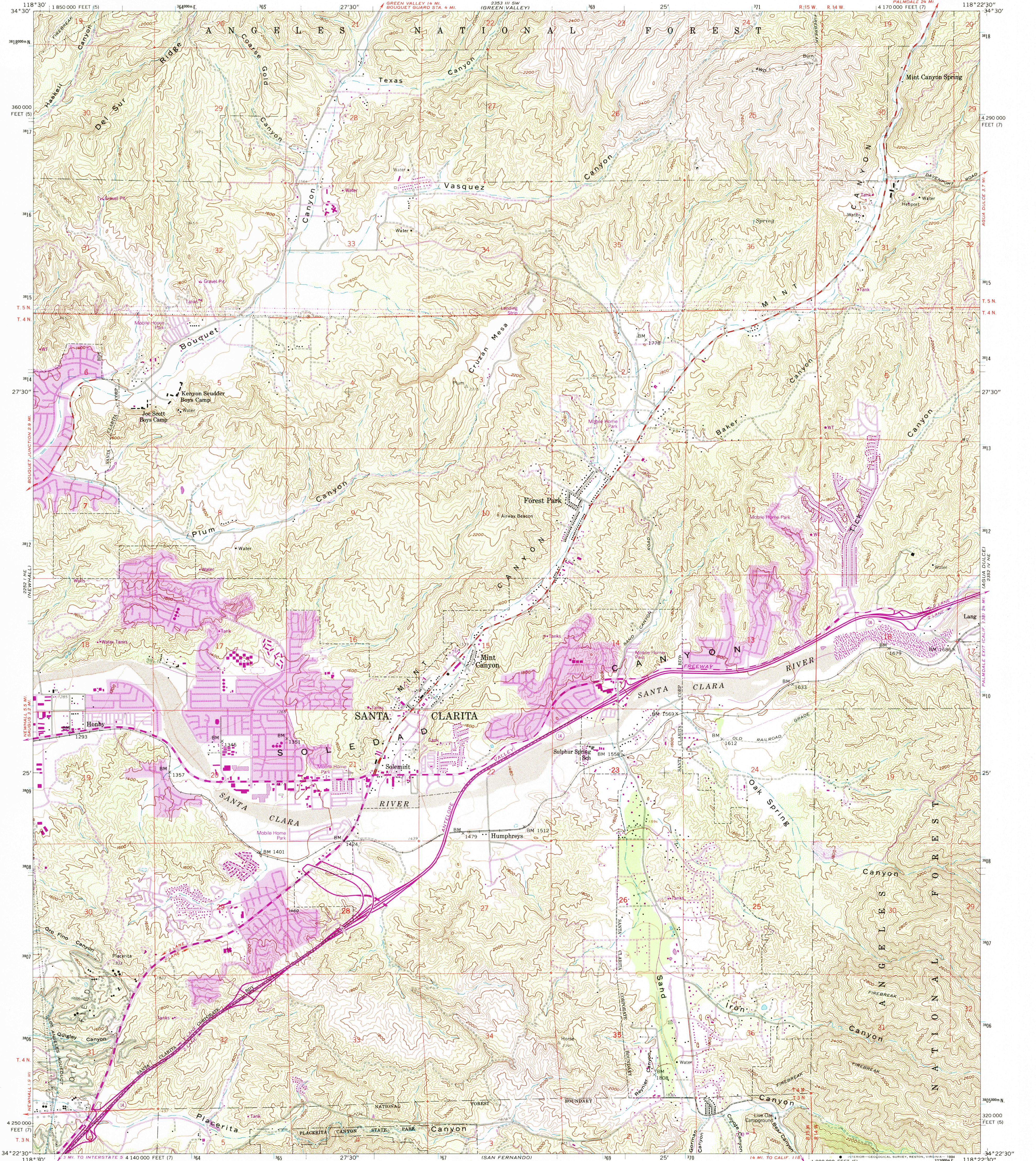
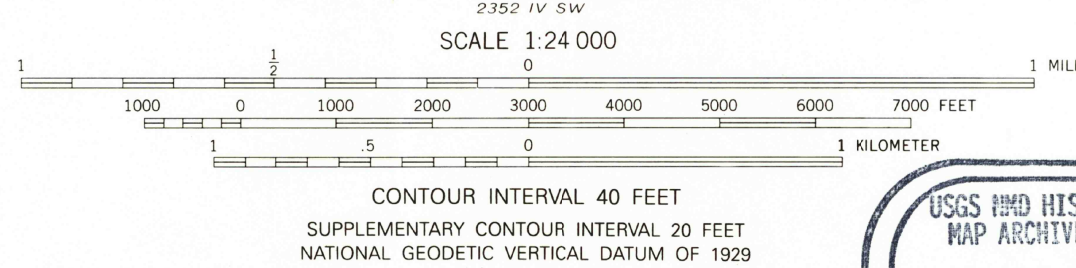
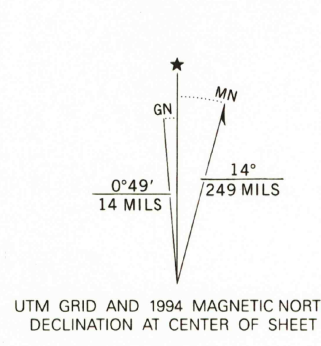


UNITED STATES
DEPARTMENT OF THE INTERIOR
GEOLOGICAL SURVEY

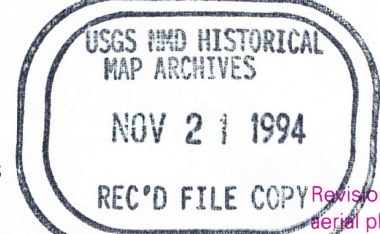
MINT CANYON QUADRANGLE
CALIFORNIA-LOS ANGELES CO.
7.5 MINUTE SERIES (TOPOGRAPHIC)



Produced by the United States Geological Survey in cooperation with California Department of Water Resources
Control by USGS and NOS/NOAA
Compiled from aerial photographs taken 1954 and 1956. Field checked 1960
North American Datum of 1927 (NAD 27). Projection: California Coordinate System, zone 7 (Lambert Conformal Conic)
10000-foot ticks: California Coordinate System zones 7 and 5
Blue 1000-meter Universal Transverse Mercator ticks, zone 11
North American Datum of 1983 (NAD 83) is shown by dashed corner ticks. The values of the shift between NAD 27 and NAD 83 for 7.5-minute intersections are obtainable from National Geodetic Survey NADCON software.
There may be private inholdings within the boundaries of the National or State reservations shown on this map.
Where omitted, land lines have not been established.
Photographed from 1991 source; no major culture or drainage changes observed. Boundaries and names revised 1994.



THIS MAP COMPLIES WITH NATIONAL MAP ACCURACY STANDARDS
FOR SALE BY U.S. GEOLOGICAL SURVEY
DENVER, COLORADO 80225, OR RESTON, VIRGINIA 22092
A FOLDER DESCRIBING TOPOGRAPHIC MAPS AND SYMBOLS IS AVAILABLE ON REQUEST



ROAD CLASSIFICATION
Primary highway, hard surface
Secondary highway, hard surface
Light-duty road, hard or improved surface
Unimproved road
Interstate Route
U. S. Route
State Route

MINT CANYON, CA
34118-D4-TF-024
1960
PHOTOGRAPHED 1988
MINOR REVISION 1994
DMA 2552 IV NW-SERIES V995