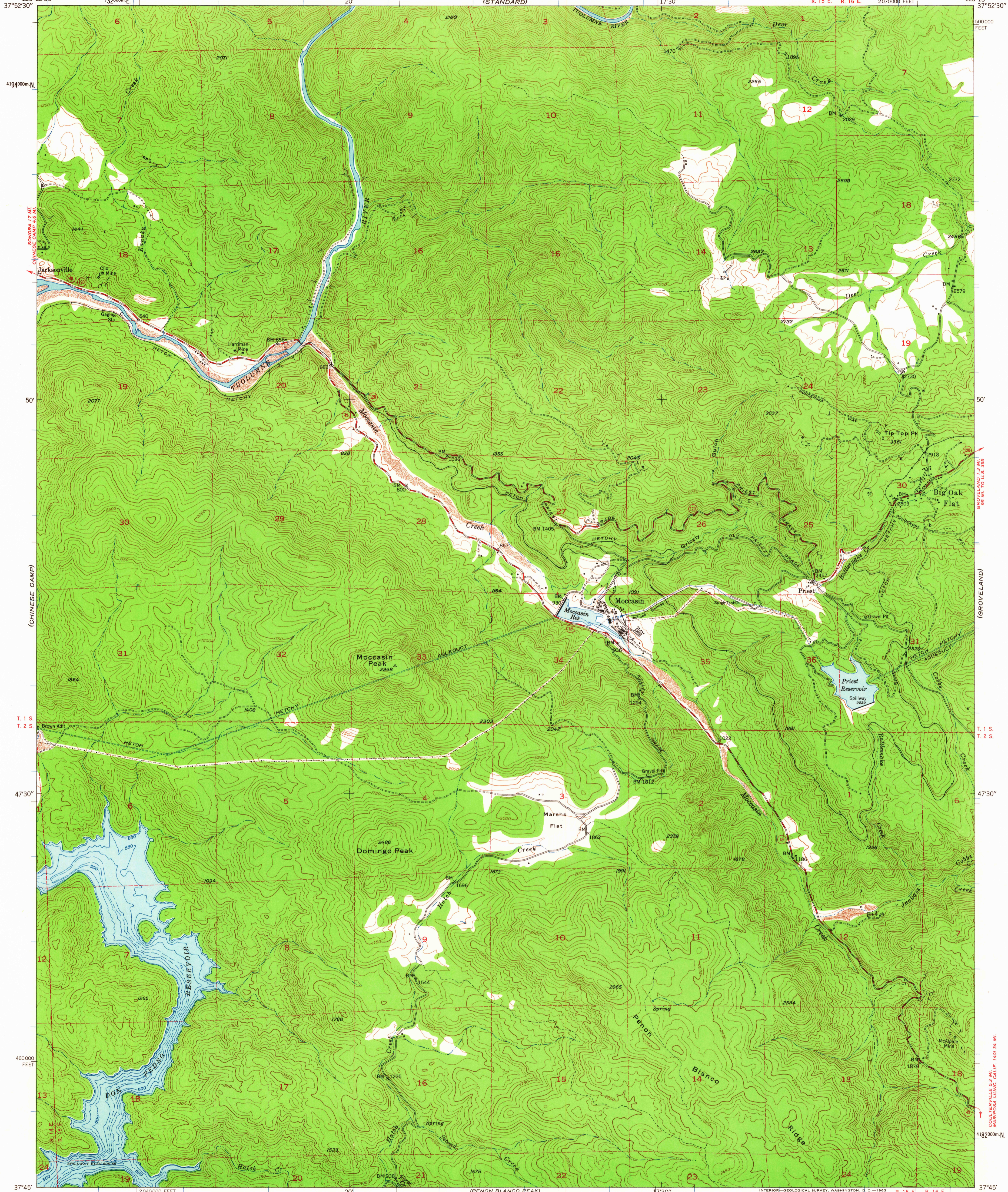
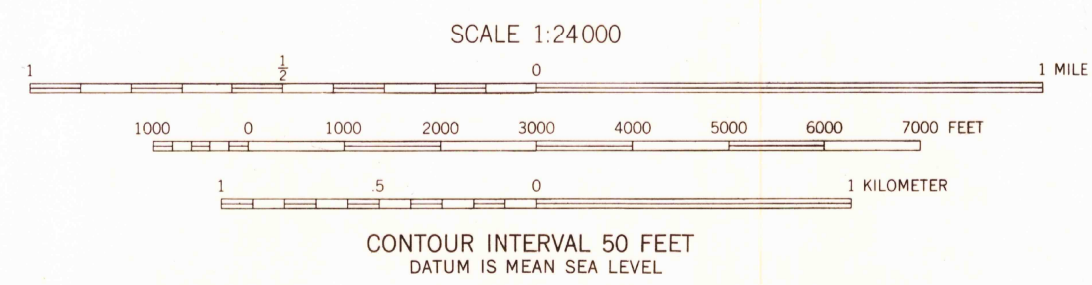
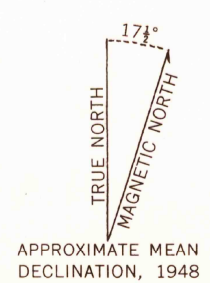


120°22'30" 732000m E 20' (STANDARD) 17'30" 120°15' 37°52'30" R. 15 E. R. 16 E. 2070000 FEET 500000 FEET



Mapped, edited, and published by the Geological Survey
Control by USGS and USC & GS
Topography from aerial photographs by multiplex methods
Aerial photographs taken 1945 Field check, 1948
Polyconic projection. 1927 North American datum
10,000-foot grid based on California coordinate system,
zone 3
1000-meter Universal Transverse Mercator grid ticks,
zone 10, shown in blue
Dashed land lines indicate approximate location



USGS
Historical File
Topographic Division



U.S.G.S.
FILE COPY
TOPOGRAPHIC DIVISION

MOCCASIN, CALIF.
N3745-W12015/7.5
1948

THIS MAP COMPLIES WITH NATIONAL MAP ACCURACY STANDARDS
FOR SALE BY U. S. GEOLOGICAL SURVEY, WASHINGTON 25, D. C.
A FOLDER DESCRIBING TOPOGRAPHIC MAPS AND SYMBOLS IS AVAILABLE ON REQUEST

37°45' 120°22'30" 2040000 FEET 20' (PENON BLANCO PEAK) 17'30" INTERIOR-GEOLOGICAL SURVEY, WASHINGTON, D. C. - 1963 R. 15 E. R. 16 E. 742000m E. 120°15' 37°45' (CULTEVILLE) SEP - 6 1963