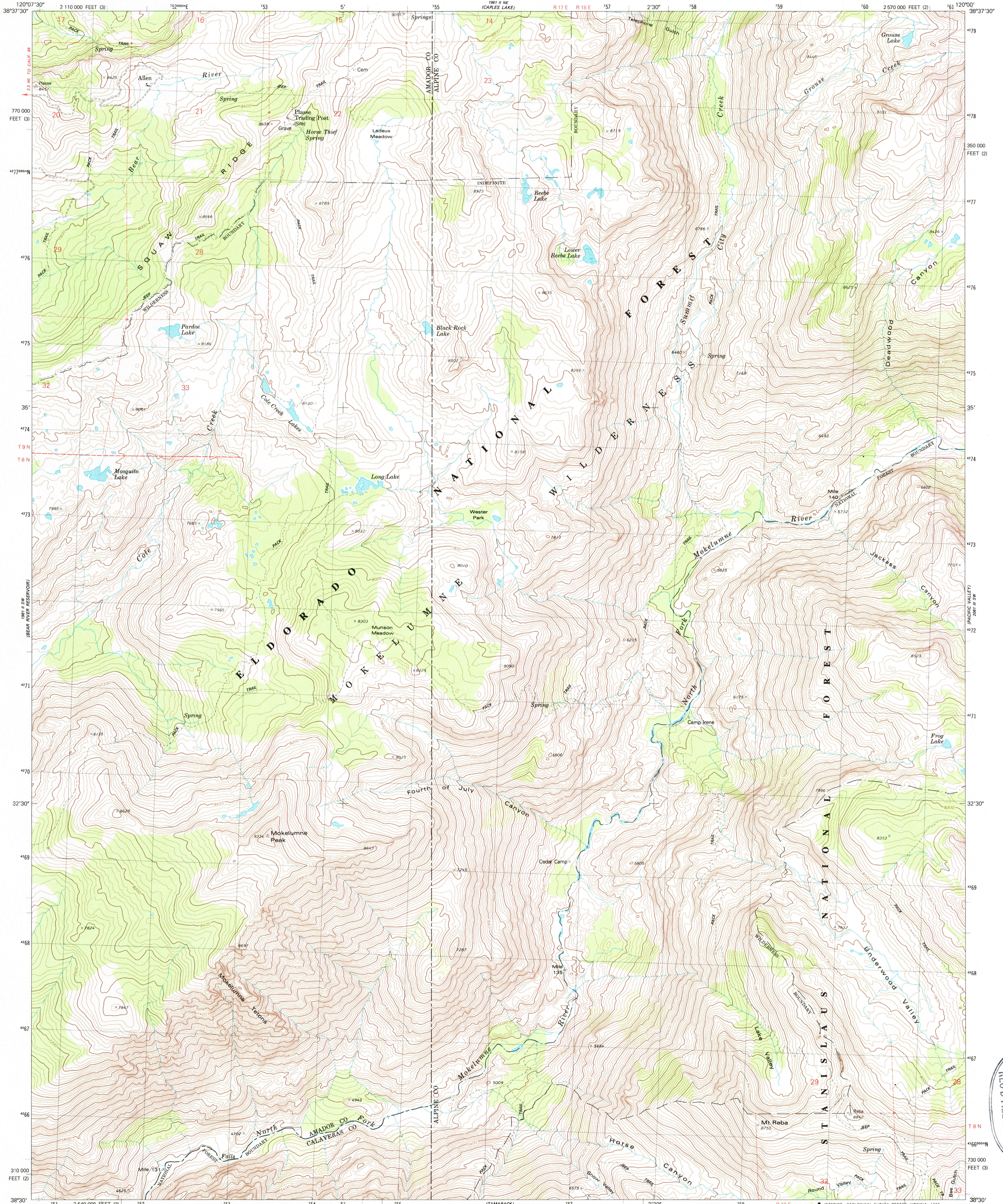


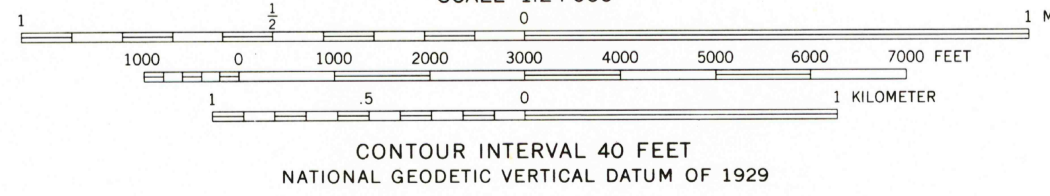
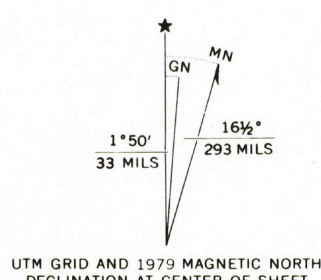
UNITED STATES
DEPARTMENT OF THE INTERIOR
GEOLOGICAL SURVEY

MOKELUMNE PEAK QUADRANGLE
CALIFORNIA
7.5 MINUTE SERIES (TOPOGRAPHIC)
SE/4 SILVER LAKE 15' QUADRANGLE



Mapped, edited, and published by the Geological Survey

Control by USGS, NOS/NOAA, and State of California
Topography by photogrammetric methods from aerial photographs taken 1973. Field checked 1974. Map edited 1979
Projection: California coordinate system, zone 2 (Lambert conformal conic)
10,000-foot grid ticks based on California coordinate system, zones 2 and 3
1000-meter Universal Transverse Mercator grid, zone 10
1927 North American Datum
To place on the predicted North American Datum 1983 move the projection lines 13 meters north and 88 meters east as shown by dashed corner ticks
There may be private inholdings within the boundaries of the National or State reservations shown on this map



CONTOUR INTERVAL 40 FEET
NATIONAL GEODETIC VERTICAL DATUM OF 1929

THIS MAP COMPLIES WITH NATIONAL MAP ACCURACY STANDARDS
FOR SALE BY U. S. GEOLOGICAL SURVEY, DENVER, COLORADO 80225, OR RESTON, VIRGINIA 22092
A FOLDER DESCRIBING TOPOGRAPHIC MAPS AND SYMBOLS IS AVAILABLE ON REQUEST

ROAD CLASSIFICATION
Primary highway, hard surface
Secondary highway, hard surface
Light-duty road, hard or improved surface
Unimproved road
Interstate Route
U. S. Route
State Route



MOKELUMNE PEAK, CALIF.
SE/4 SILVER LAKE 15' QUADRANGLE
38120 E1-TF-024

1979

DMA 1961 II SE-SERIES V895

USGS NHD HISTORICAL DATA
MAR 23 1986
REC'D FILE COPY