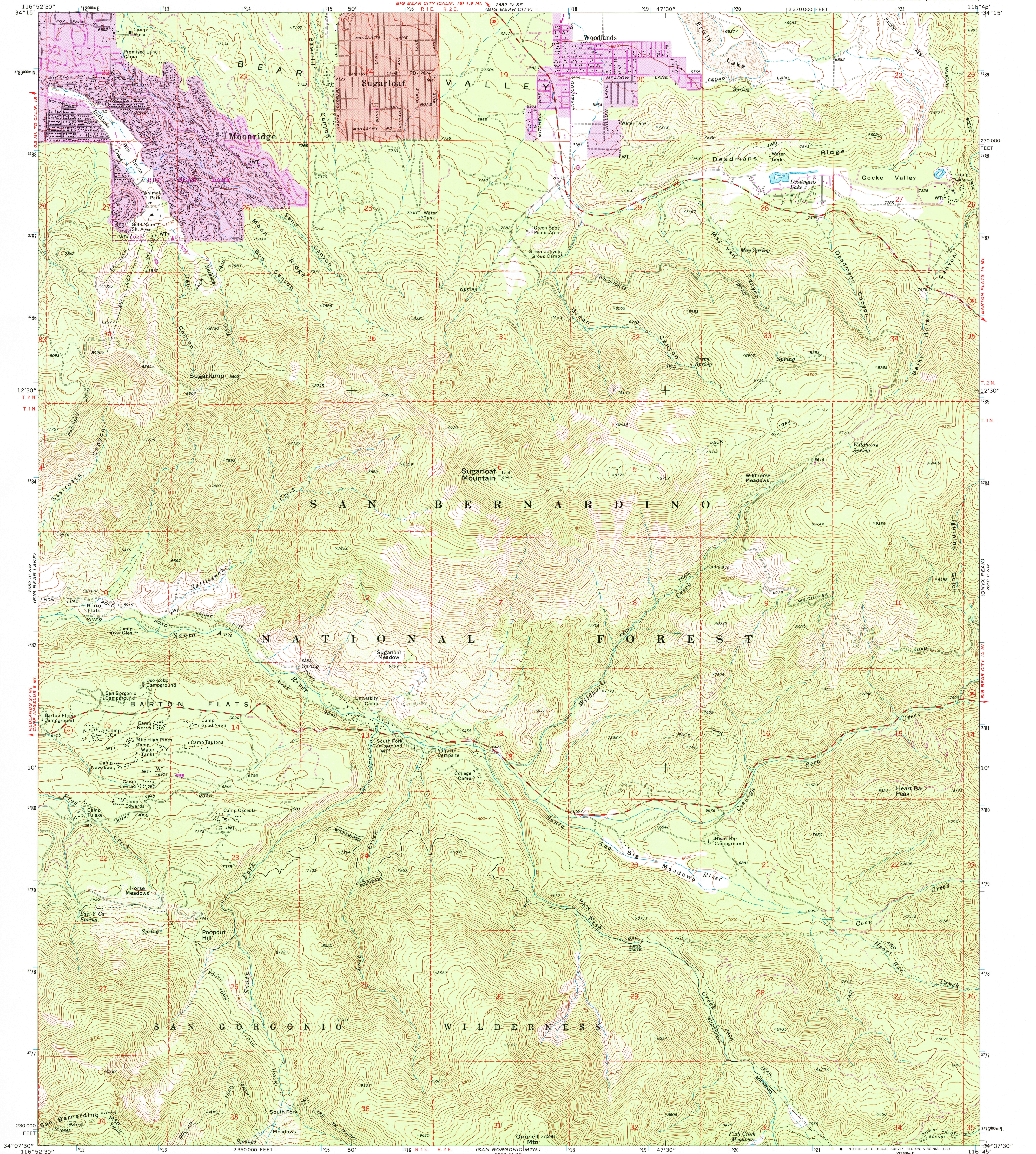


UNITED STATES
DEPARTMENT OF THE INTERIOR
GEOLOGICAL SURVEY

MOONRIDGE QUADRANGLE
CALIFORNIA-SAN BERNARDINO CO.
7.5 MINUTE SERIES (TOPOGRAPHIC)



Produced by the United States Geological Survey in cooperation with California Department of Water Resources

Compiled from aerial photographs taken 1969. Field checked 1970
North American Datum of 1927 (NAD 27). Projection and
10000-foot ticks: California Coordinate System, zone 5
(Lambert Conformal Conic)
Blue 1000-meter Universal Transverse Mercator ticks, zone 11
North American Datum of 1983 (NAD 83) is shown by dashed
corner ticks. The values of the shift between NAD 27 and NAD 83
for 7.5-minute intersections are obtainable from National Geographic
Survey NADCON software

There may be private inholdings within the boundaries of the
National or State reservations shown on this map
Red tint indicates areas in which only landmark buildings are shown

Photorevised from 1989 source; no major culture or
drainage changes observed. Boundaries and names
revised 1994

SCALE 1:24 000
CONTOUR INTERVAL 40 FEET
NATIONAL GEODETIC VERTICAL DATUM OF 1929
THIS MAP COMPLIES WITH NATIONAL MAP ACCURACY STANDARDS.
FOR SALE BY U. S. GEOLOGICAL SURVEY, DENVER, COLORADO 80225, OR RESTON, VIRGINIA 22092
A FOLDER DESCRIBING TOPOGRAPHIC MAPS AND SYMBOLS IS AVAILABLE ON REQUEST

USES THE HISTORICAL
MAP ARCHIVES
OCT 25 1994
REC'D FILE COPY



ROAD CLASSIFICATION
Primary highway, hard surface
Secondary highway, hard surface
Unimproved road
Interstate Route
U. S. Route
State Route

MOONRIDGE, CA
34116-B7-TF-024

1970
PHOTOREVISED 1988
MINOR REVISION 1994
DMA 2652 III NE-SERIES V895