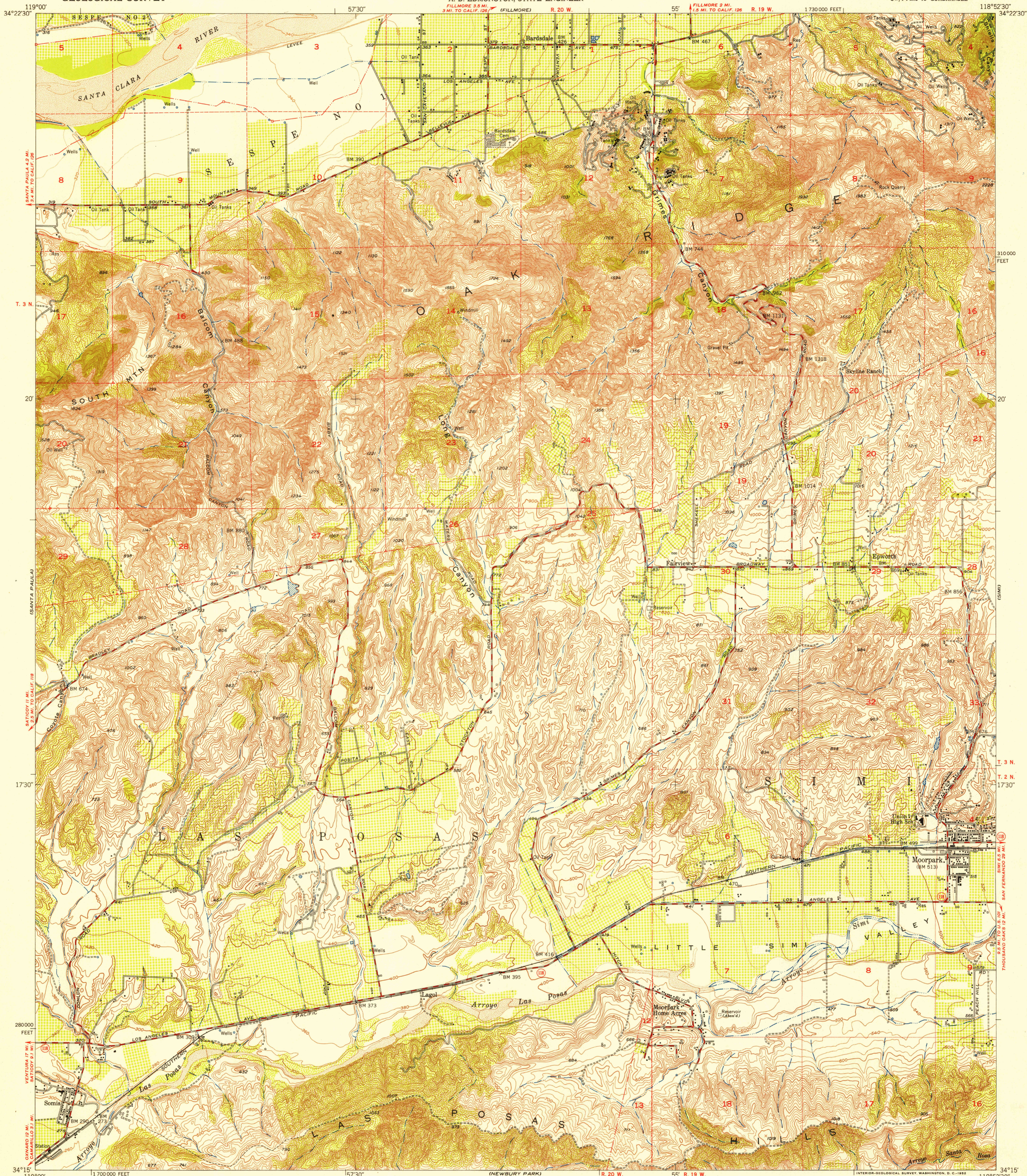
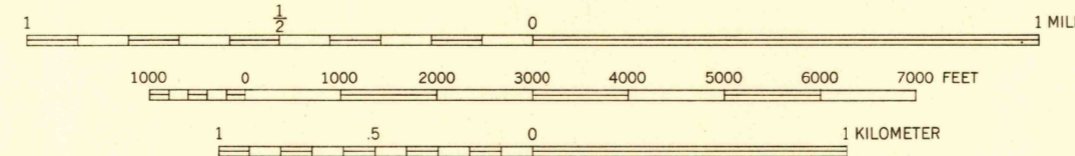


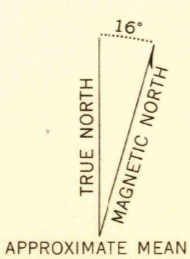
U.S.G.S.
FILE COPY
Inspection and Mapping



Mapped, edited, and published by the Geological Survey
Control by USGS and USC&GS
Topography from aerial photographs by photogrammetric methods
Aerial photographs taken 1947. Field check 1951
Polyconic projection. 1927 North American datum
10,000-foot grid based on California coordinate system, zone 5
Dashed land lines indicate approximate locations
Dotted land lines were established by private survey



CONTOUR INTERVAL 20 FEET
DOTTED LINES REPRESENT HALF-INTERVAL CONTOURS
DATUM IS MEAN SEA LEVEL



ROAD CLASSIFICATION
Heavy-duty ———— **LANE LANE** Light-duty ————
Medium-duty ———— **LANE LANE** Unimproved dirt ————
U. S. Route State Route

U.S.G.S. Historical File
FILE COPY
Inspection and Mapping

MOORPARK, CALIF.
SW/4 PIRU 15' QUADRANGLE
N3415-W11852.5/7.5