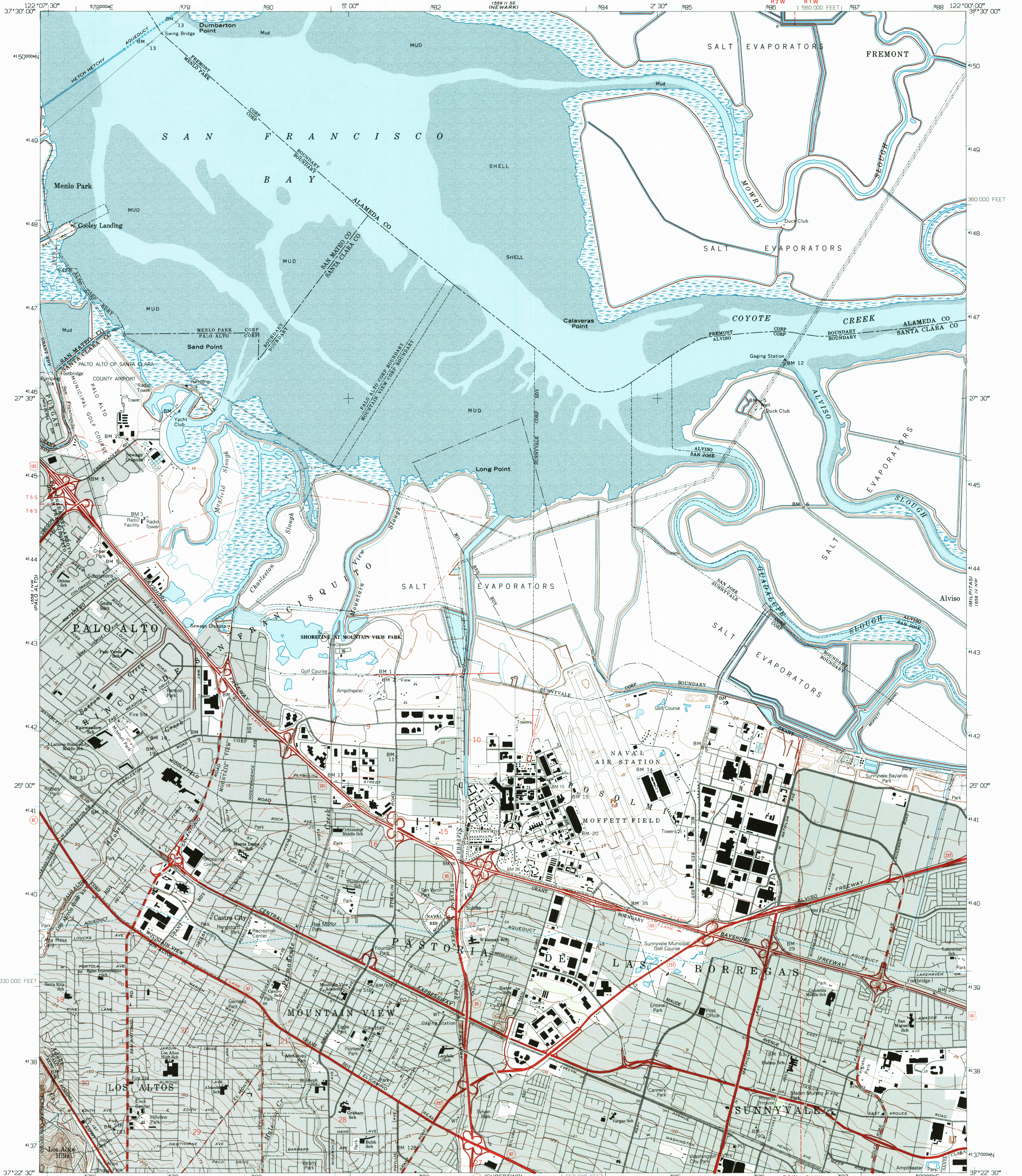
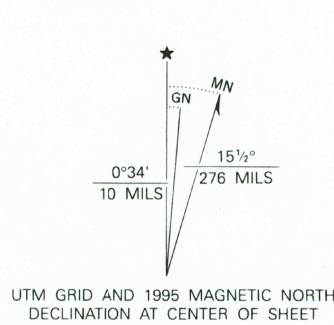


UNITED STATES
DEPARTMENT OF THE INTERIOR
GEOLOGICAL SURVEY

MOUNTAIN VIEW QUADRANGLE
CALIFORNIA
7.5 MINUTE SERIES (TOPOGRAPHIC)



Produced by the United States Geological Survey
Control by USGS and NOS/NOAA
Compiled from imagery dated 1948. Revised from imagery dated 1991. PLSS and survey control current as of 1961. Map edited 1995. Contours and land elevations have not been revised and may conflict with other content.
North American Datum of 1927 (NAD 27). Projection and blue 1000-meter Universal Transverse Mercator ticks, zone 10 10000-foot ticks. California Coordinate System, zone 3.
North American Datum of 1983 (NAD 83) is shown by dashed corner ticks. The values of the shift between NAD 27 and NAD 83 for 7.5-minute intersections are obtainable from National Geodetic Survey NADCON software.
There may be private inholdings within the boundaries of the National or State reservations shown on this map.
Gray tint indicates areas in which only landmark buildings are shown.
This map lies within a subsidence area.



SCALE 1:24,000
CONTOUR INTERVAL 5 FEET
NATIONAL GEODETIC VERTICAL DATUM OF 1929
SHORELINE SHOWN REPRESENTS THE APPROXIMATE LINE OF HIGH WATER
THE MEAN RANGE OF TIDE IS APPROXIMATELY 5 FEET
THIS MAP COMPLIES WITH NATIONAL MAP ACCURACY STANDARDS
FOR SALE BY U. S. GEOLOGICAL SURVEY, DENVER, COLORADO 80225, OR RESTON, VIRGINIA 22092
A FOLDER DESCRIBING TOPOGRAPHIC MAPS AND SYMBOLS IS AVAILABLE ON REQUEST

ROAD CLASSIFICATION

Primary highway, light-duty road, hard or improved surface	Secondary highway, hard surface	Unimproved road	Interstate Route	U. S. Route	State Route
--	---------------------------------	-----------------	------------------	-------------	-------------

QUADRANGLE LOCATION

USGS NHD HISTORICAL MAP ARCHIVES
JUN 19 1995
REC'D FILE COPY

MOUNTAIN VIEW, CA
37122-D1-TF-024
1991
DMA 1558 I NE-SERIES V895