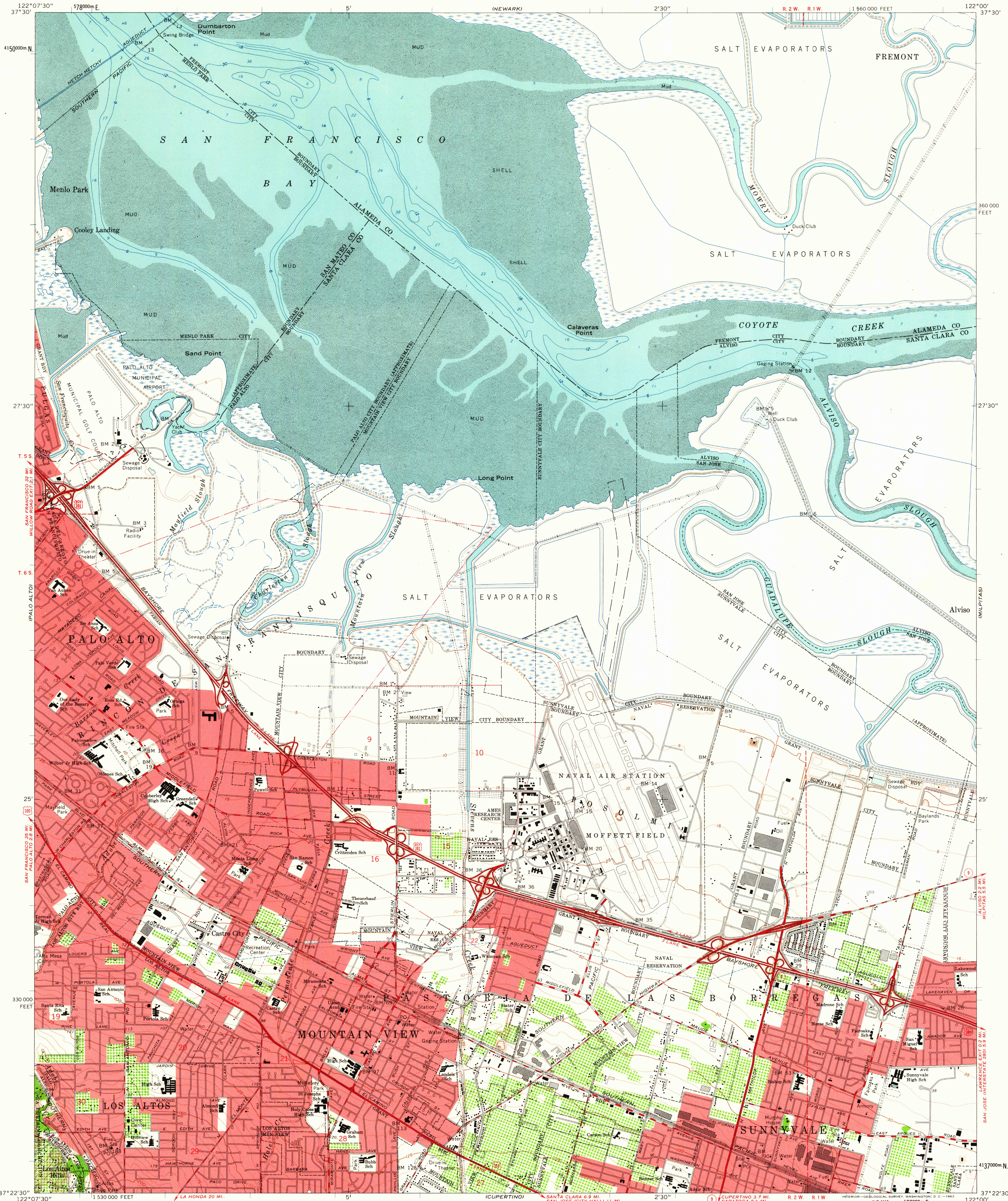


UNITED STATES
DEPARTMENT OF THE INTERIOR
GEOLOGICAL SURVEY

MOUNTAIN VIEW QUADRANGLE
CALIFORNIA
7.5 MINUTE SERIES (TOPOGRAPHIC)
NE/4 PALO ALTO 15' QUADRANGLE



Maped, edited, and published by the Geological Survey
with cooperation by the California Department of Water Resources
Control by USGS and USC&GS

Topography from aerial photographs by photogrammetric methods
and by plane-table surveys 1953. Aerial photographs taken 1948
Revised from aerial photographs by photogrammetric methods
and by plane-table surveys 1961. Aerial photographs taken 1960

Selected hydrographic data compiled from USC&GS Chart 5531 (1959)
This information is not intended for navigational purposes

Polyconic projection. 1927 North American datum
10,000-foot grid based on California coordinate system, zone 3
1000-meter Universal Transverse Mercator grid ticks, zone 10, shown in blue

Red tint indicates areas in which only landmark buildings are shown
Dashed land lines indicate approximate locations
This map lies within a subsidence area

TRUE NORTH
MAGNETIC NORTH
APPROXIMATE MEAN
DECLINATION, 1961

SCALE 1:24,000
1 0 1000 2000 3000 4000 5000 6000 7000 FEET
1 KILOMETER

CONTOUR INTERVAL 5 FEET
DATUM IS MEAN SEA LEVEL
DEPTH CURVES AND SOUNDINGS IN FEET—DATUM IS MEAN LOW WATER
SHORELINE SHOWN REPRESENTS THE APPROXIMATE LINE OF MEAN HIGH WATER
THE MEAN RANGE OF TIDE IS APPROXIMATELY 5 FEET

THIS MAP COMPLIES WITH NATIONAL MAP ACCURACY STANDARDS
FOR SALE BY U. S. GEOLOGICAL SURVEY, DENVER 25, COLORADO OR WASHINGTON 25, D. C.
A FOLDER DESCRIBING TOPOGRAPHIC MAPS AND SYMBOLS IS AVAILABLE ON REQUEST

ROAD CLASSIFICATION
Heavy-duty ——— Light-duty ———
Medium-duty ——— Unimproved dirt ———
U. S. Route ——— State Route ———



USGS
Historical File
Topographic Division
MOUNTAIN VIEW, CALIF.
NE/4 PALO ALTO 15' QUADRANGLE
N3722.5—W12200/7.5
1961

4115

AUG 28 1962