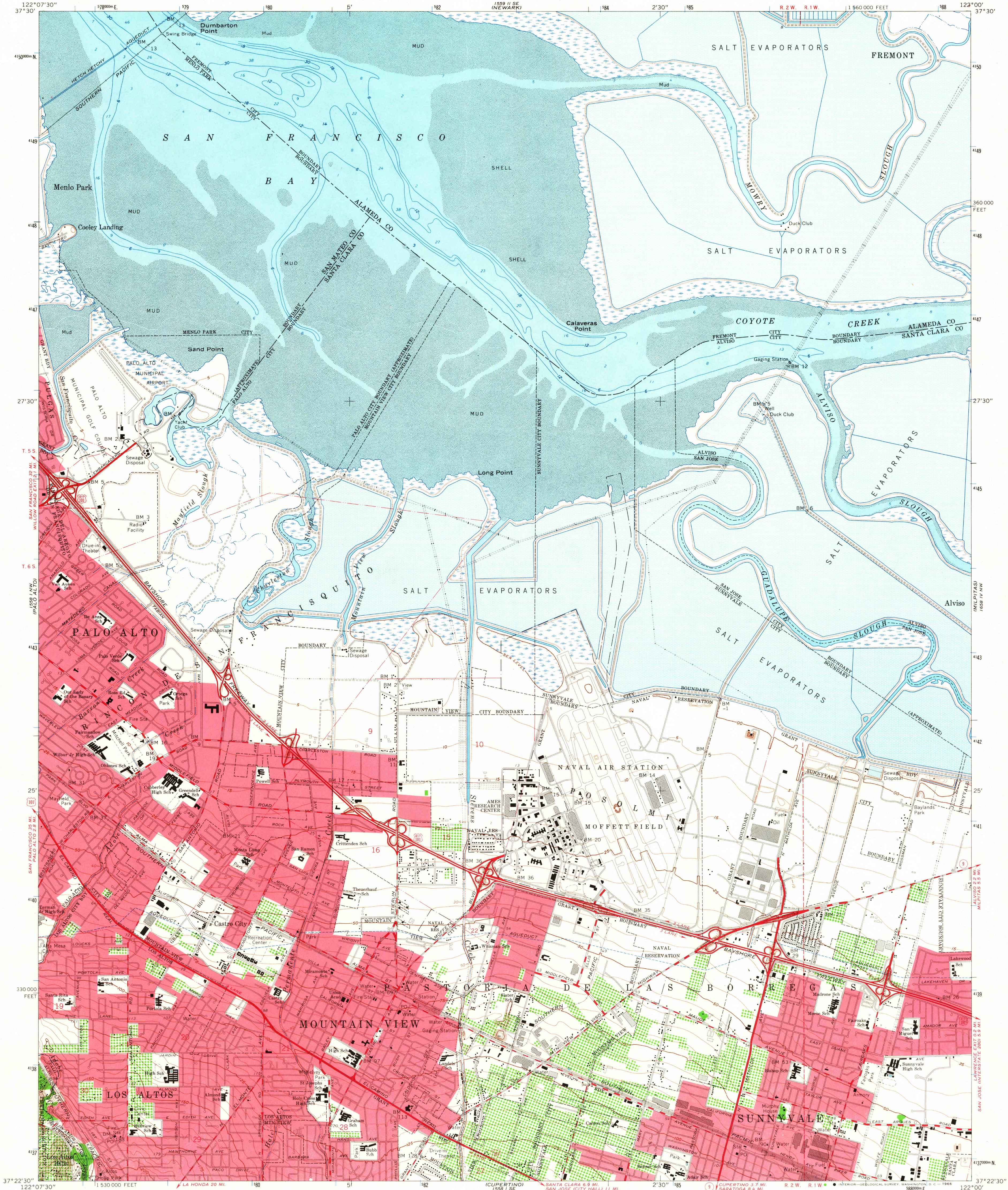


UNITED STATES
DEPARTMENT OF THE INTERIOR
GEOLOGICAL SURVEY

MOUNTAIN VIEW QUADRANGLE
CALIFORNIA
7.5 MINUTE SERIES (TOPOGRAPHIC)
NE/4 PALO ALTO 15' QUADRANGLE



Mapped, edited, and published by the Geological Survey with cooperation by the California Department of Water Resources Control by USGS and USC&GS

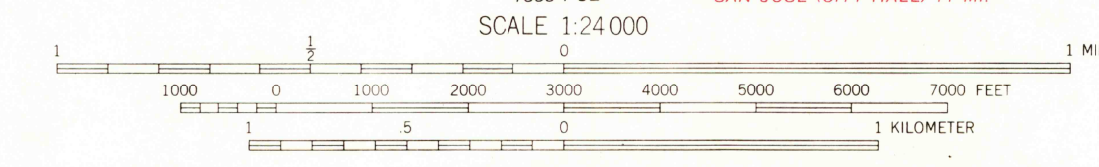
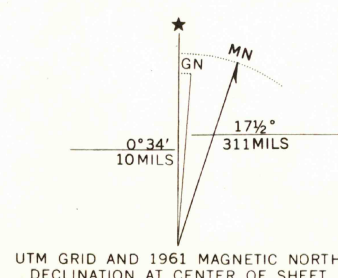
Topography from aerial photographs by photogrammetric methods and by plane-table surveys 1953. Aerial photographs taken 1948. Revised from aerial photographs by photogrammetric methods and by plane-table surveys 1961. Aerial photographs taken 1960

Selected hydrographic data compiled from USC&GS Chart 5531 (1959). This information is not intended for navigational purposes

Polyconic projection. 1927 North American datum 10,000-foot grid based on California coordinate system, zone 3 1000-meter Universal Transverse Mercator grid ticks, zone 10, shown in blue

Red tint indicates areas in which only landmark buildings are shown Dashed land lines indicate approximate locations This map lies within a subsidence area

Areas covered by dashed light-blue pattern are subject to controlled inundation



THIS MAP COMPLIES WITH NATIONAL MAP ACCURACY STANDARDS
FOR SALE BY U. S. GEOLOGICAL SURVEY, DENVER, COLORADO 80225 OR WASHINGTON, D. C. 20242
A FOLDER DESCRIBING TOPOGRAPHIC MAPS AND SYMBOLS IS AVAILABLE ON REQUEST

USGS
Historical File
Topographic Division



ROAD CLASSIFICATION	
Heavy-duty	Light-duty
Medium-duty	Unimproved dirt
U. S. Route	State Route

U.S.G.S. MOUNTAIN VIEW, CALIF.
NE/4 PALO ALTO 15' QUADRANGLE
N3722.5—W12200/7.5
TOPOGRAPHIC DIVISION
1961
AMS 1558 1 NE—SERIES V895

9795
SEP 1 1960