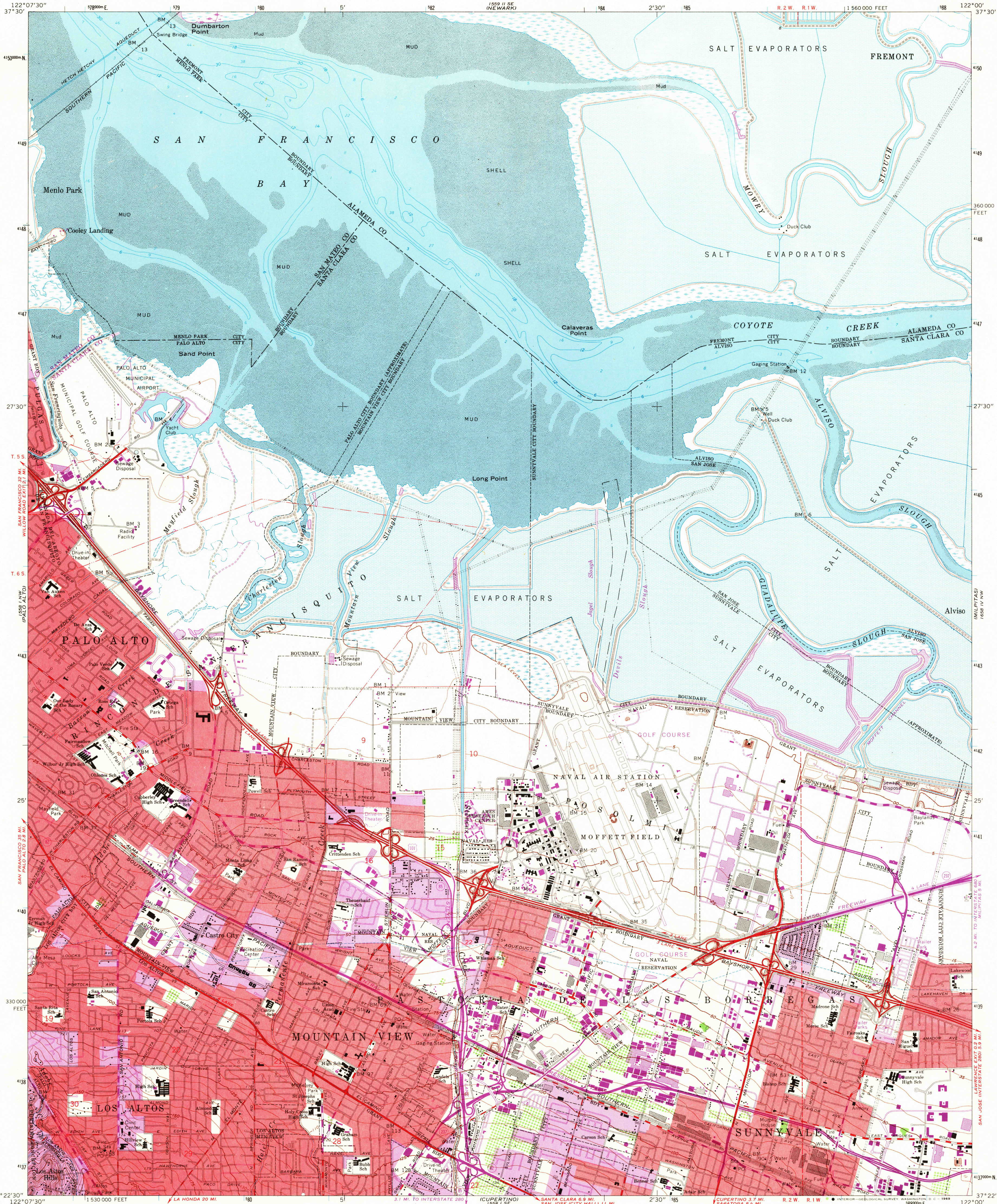


UNITED STATES  
DEPARTMENT OF THE INTERIOR  
GEOLOGICAL SURVEY

MOUNTAIN VIEW QUADRANGLE  
CALIFORNIA  
7.5 MINUTE SERIES (TOPOGRAPHIC)  
NE/4 PALO ALTO 15' QUADRANGLE



Mapped, edited, and published by the Geological Survey  
with cooperation by the California Department of Water Resources  
Control by USGS and USC&GS

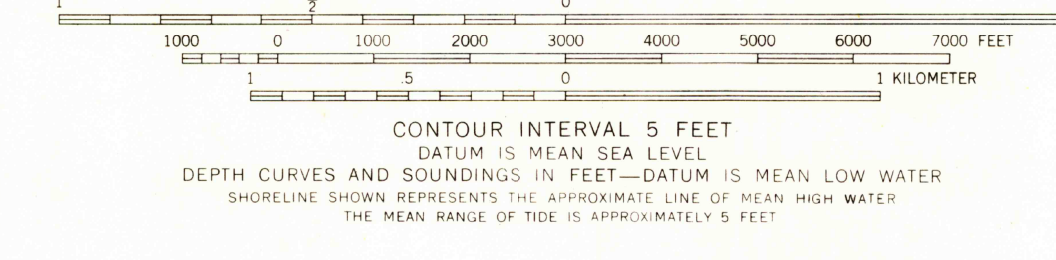
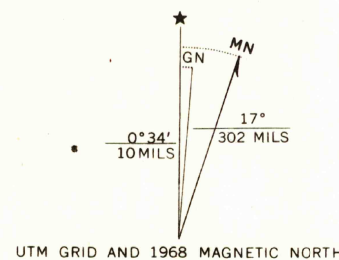
Topography from aerial photographs by photogrammetric methods  
and by planetable surveys 1953. Aerial photographs taken 1948  
Revised from aerial photographs by photogrammetric methods  
and by planetable surveys 1961. Aerial photographs taken 1960

Selected hydrographic data compiled from USC&GS Chart 5531 (1959)  
This information is not intended for navigational purposes

Polyconic projection. 1927 North American datum  
10,000-foot grid based on California coordinate system, zone 3  
1000-meter Universal Transverse Mercator grid ticks, zone 10, shown in blue

Red tint indicates areas in which only landmark buildings are shown  
Dashed land lines indicate approximate locations  
This map lies within a subsidence area

Areas covered by dashed light-blue pattern are subject  
to controlled inundation



THIS MAP COMPLIES WITH NATIONAL MAP ACCURACY STANDARDS  
FOR SALE BY U.S. GEOLOGICAL SURVEY, DENVER, COLORADO 80225 OR WASHINGTON, D. C. 20242  
A FOLDER DESCRIBING TOPOGRAPHIC MAPS AND SYMBOLS IS AVAILABLE ON REQUEST

USCS  
Historical File  
Topographic Division



QUADRANGLE LOCATION

U.S.G.S.  
FILE COPY  
TOPOGRAPHIC DIVISION

ROAD CLASSIFICATION  
Heavy-duty ————  
Medium-duty ————  
Unimproved dirt - - - - -  
U.S. Route ————  
State Route ————

MOUNTAIN VIEW, CALIF.  
NE/4 PALO ALTO 15' QUADRANGLE  
N3722.5—W12200/7.5

1961  
PHOTOREVISED 1968  
AMS 1558 I NE—SERIES V895

Revisions shown in purple compiled from aerial photographs  
taken 1968. This information not field checked  
Purple tint indicates extension of urban areas

JUL 18 1969