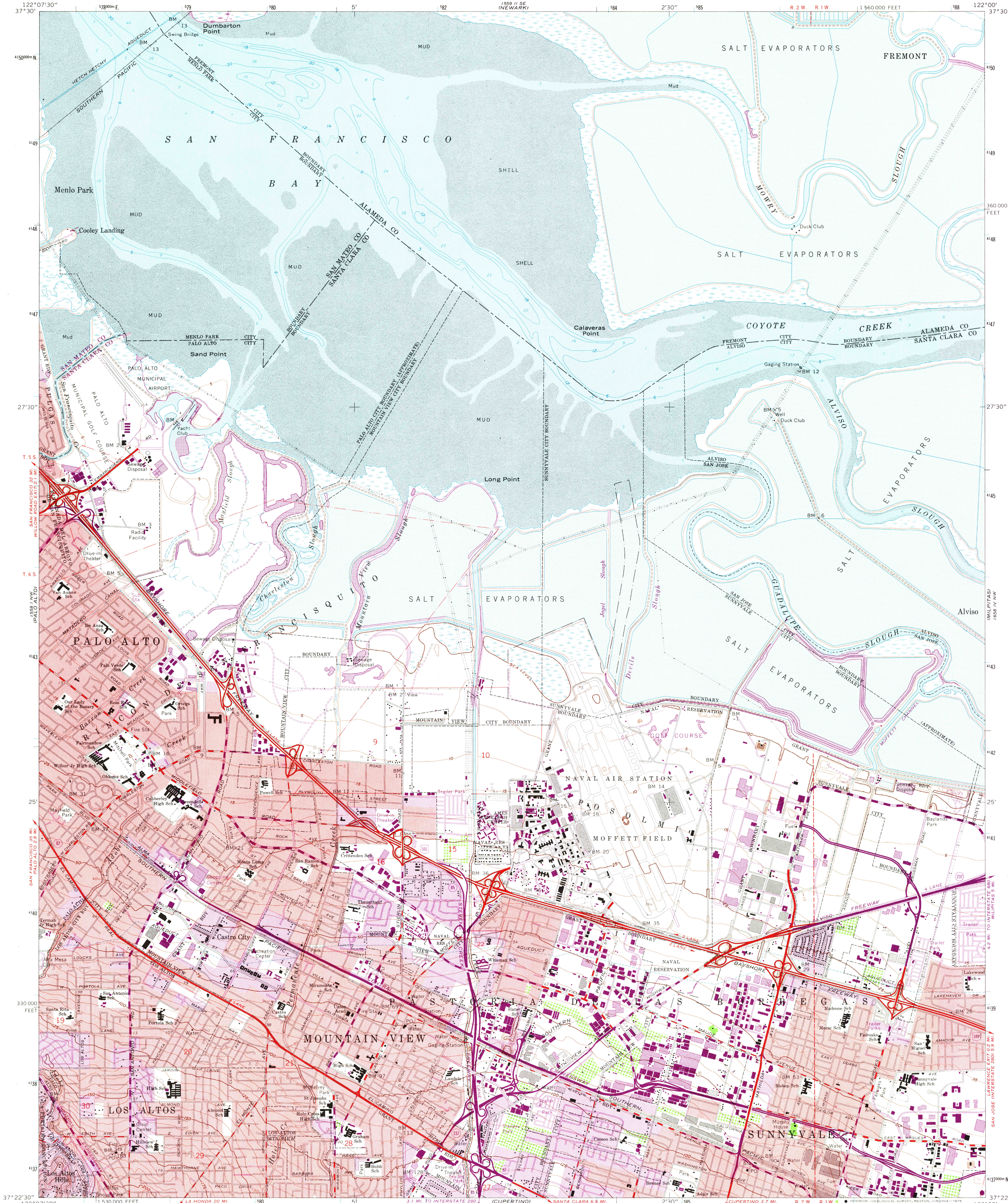


UNITED STATES
DEPARTMENT OF THE INTERIOR
GEOLOGICAL SURVEY

MOUNTAIN VIEW QUADRANGLE
CALIFORNIA
7.5 MINUTE SERIES (TOPOGRAPHIC)
NE/4 PALO ALTO 15' QUADRANGLE



Mapped, edited, and published by the Geological Survey
with cooperation by the California Department of Water Resources
Control by USGS and USC&GS

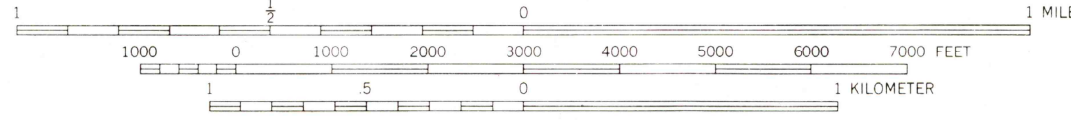
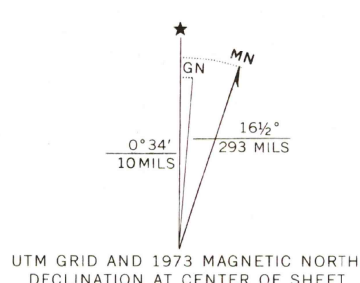
Topography from aerial photographs by photogrammetric methods
and by planetable surveys 1953. Aerial photographs taken 1948
Revised from aerial photographs by photogrammetric methods
and by planetable surveys 1961. Aerial photographs taken 1960

Selected hydrographic data compiled from USC&GS Chart 5531 (1959)
This information is not intended for navigational purposes

Polyconic projection. 1927 North American datum
10,000-foot grid based on California coordinate system, zone 3
1000-meter Universal Transverse Mercator grid ticks, zone 10, shown in blue

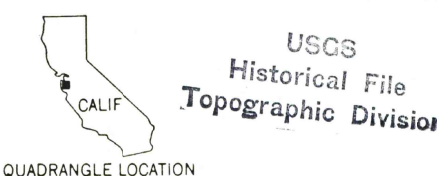
Red tint indicates areas in which only landmark buildings are shown
Dashed land lines indicate approximate locations
This map lies within a subsidence area

Areas covered by dashed light-blue pattern are subject
to controlled inundation



CONTOUR INTERVAL 5 FEET
NATIONAL GEODETIC VERTICAL DATUM OF 1929
DEPTH CURVES AND SOUNDINGS IN FEET—DATUM IS MEAN LOW WATER
SHORELINE SHOWN REPRESENTS THE APPROXIMATE LINE OF MEAN HIGH WATER
THE MEAN RANGE OF TIDE IS APPROXIMATELY 5 FEET

THIS MAP COMPLIES WITH NATIONAL MAP ACCURACY STANDARDS
FOR SALE BY U. S. GEOLOGICAL SURVEY, DENVER, COLORADO 80225, OR RESTON, VIRGINIA 22092
A FOLDER DESCRIBING TOPOGRAPHIC MAPS AND SYMBOLS IS AVAILABLE ON REQUEST



Revisions shown in purple compiled from aerial photographs
taken 1968 and 1973. This information not field checked
Purple tint indicates extension of urban areas

ROAD CLASSIFICATION
Heavy-duty ——— Light-duty ———
Medium-duty ——— Unimproved dirt ———

U. S. Route ——— State Route ———

MOUNTAIN VIEW, CALIF.
NE/4 PALO ALTO 15' QUADRANGLE
N3722.5—W12200/7.5

1961
PHOTOREVISED 1968 AND 1973
AMS 1558 I NE—SERIES V895

FEB 12 1975

11760