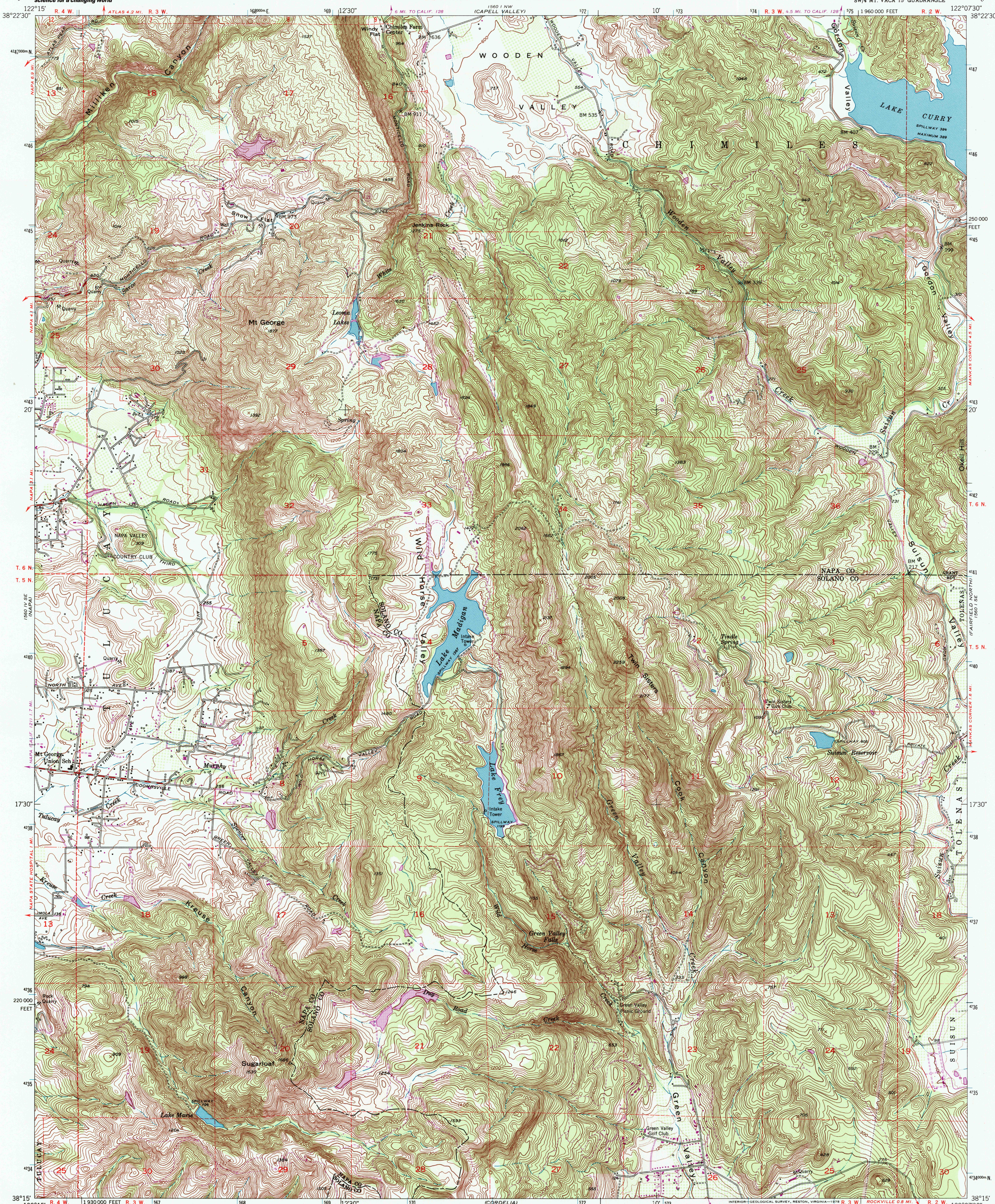




U.S. DEPARTMENT OF THE INTERIOR  
U.S. GEOLOGICAL SURVEY

STATE OF CALIFORNIA  
DEPARTMENT OF WATER RESOURCES

MT. GEORGE QUADRANGLE  
CALIFORNIA  
7.5 MINUTE SERIES (TOPOGRAPHIC)  
SW/4 MT. VACA 15' QUADRANGLE



Mapped, edited, and published by the Geological Survey

Control by USGS and USC&GS

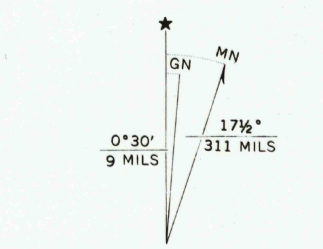
Topography from aerial photographs by multiplex methods  
Aerial photographs taken 1948. Field check 1951

Polyconic projection. 1927 North American datum  
10,000-foot grid based on California coordinate system, zone 2  
1000-meter Universal Transverse Mercator grid ticks,  
zone 10, shown in blue

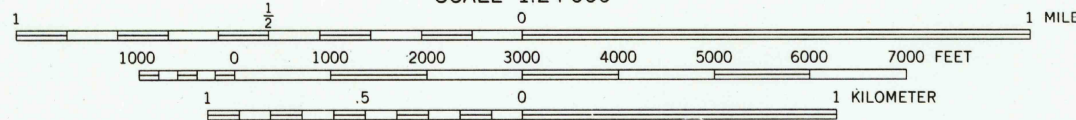
Revisions shown in purple compiled from aerial photographs  
taken 1968. This information not field checked

Map photinspected 1973

No major culture or drainage changes observed



UTM GRID AND 1968 MAGNETIC NORTH  
DECLINATION AT CENTER OF SHEET



CONTOUR INTERVAL 20 FEET  
DOTTED LINES REPRESENT 5-FOOT CONTOURS  
NATIONAL GEODETIC VERTICAL DATUM OF 1929



QUADRANGLE LOCATION

ROAD CLASSIFICATION	
Heavy-duty	Light-duty
Medium-duty	Unimproved dirt
	State Route

MT. GEORGE, CALIF.  
SW/4 MT. VACA 15' QUADRANGLE  
N 3815-W 12207 5/7.5  
PHOTOINSPECTED 1973  
1951

AMS 1560 I SW-SERIES V895

THIS MAP COMPLIES WITH NATIONAL MAP ACCURACY STANDARDS  
FOR SALE BY U.S. GEOLOGICAL SURVEY, P.O. BOX 25286, DENVER, COLORADO 80225  
A FOLDER DESCRIBING TOPOGRAPHIC MAPS AND SYMBOLS IS AVAILABLE ON REQUEST

