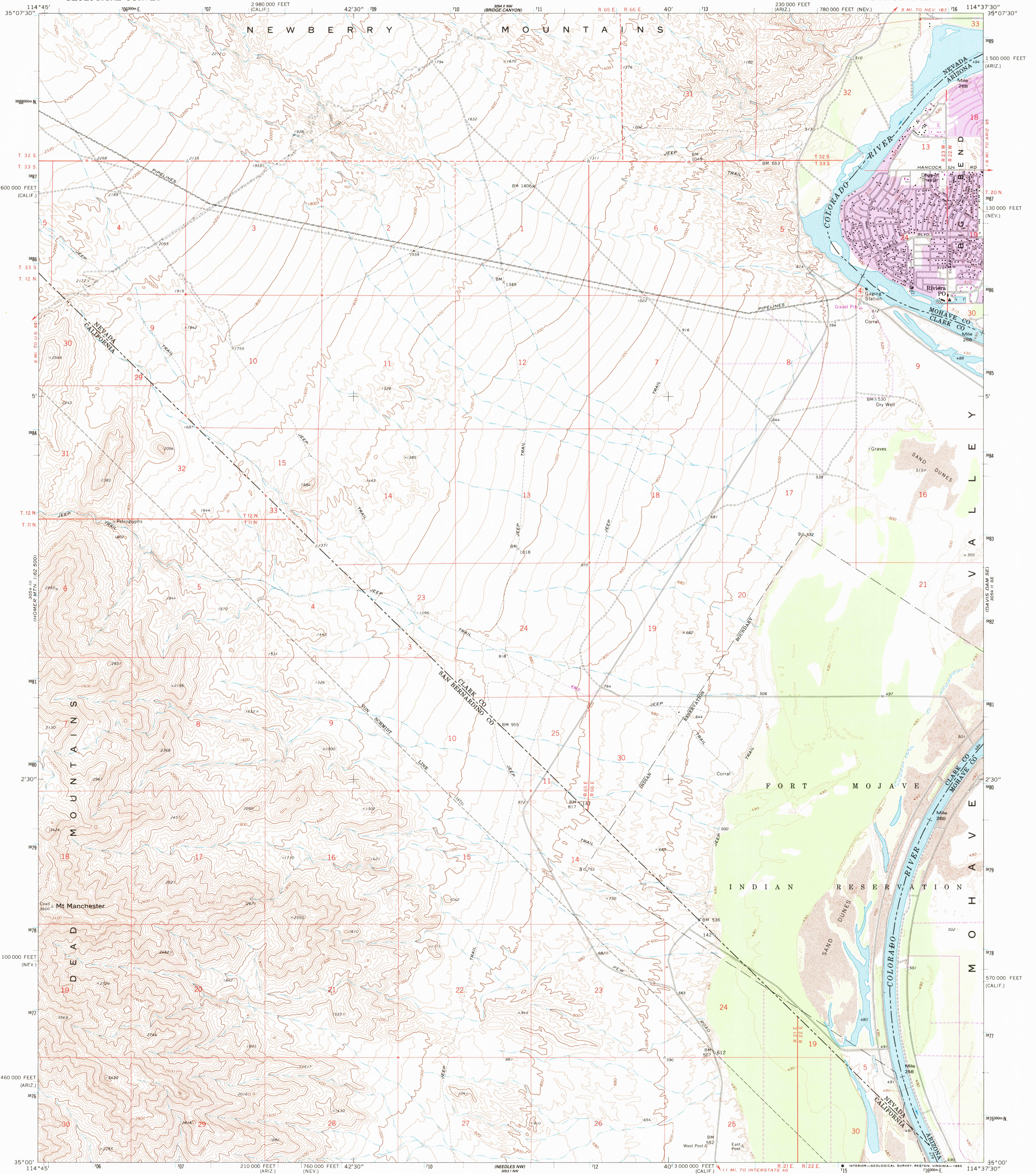


UNITED STATES  
DEPARTMENT OF THE INTERIOR  
GEOLOGICAL SURVEY

MT. MANCHESTER QUADRANGLE  
CALIFORNIA-NEVADA-ARIZONA  
7.5 MINUTE SERIES (TOPOGRAPHIC)  
SW 1/4 DAVIS DAM 15' QUADRANGLE



Mapped, edited, and published by the Geological Survey

Control by USGS and NOS/NOAA

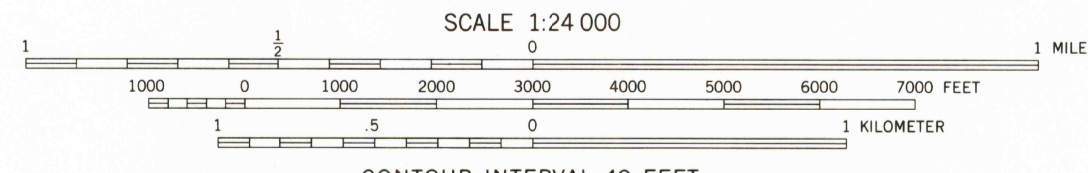
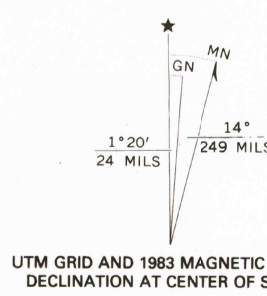
Topography by photogrammetric methods from aerial photographs taken 1969. Field checked 1970

Polycyclic projection. 1927 North American datum 10,000-foot grids based on Nevada coordinate system, east zone, California coordinate system, zone 5, and Arizona coordinate system, west zone

1000-meter Universal Transverse Mercator grid ticks, zone 11, shown in blue  
To place on the predicted North American Datum 1983 move the projection lines 2 meters north and 74 meters east as shown by dashed corner ticks

Where omitted, land lines have not been established or are not shown because of insufficient data

There may be private inholdings within the boundaries of the National or State reservations shown on this map



CONTOUR INTERVAL 40 FEET  
DOTTED LINES REPRESENT 10-FOOT CONTOURS  
NATIONAL GEODETIC VERTICAL DATUM OF 1929



ROAD CLASSIFICATION

Primary highway, hard surface	Light-duty road, hard or improved surface
Secondary highway, hard surface	Unimproved road
Interstate Route	U. S. Route
	State Route

MT. MANCHESTER, CALIF.-NEV.-ARIZ.  
SW 1/4 DAVIS DAM 15' QUADRANGLE  
N3500-W11437.5/7.5

THIS MAP COMPLIES WITH NATIONAL MAP ACCURACY STANDARDS  
FOR SALE BY U. S. GEOLOGICAL SURVEY, DENVER, COLORADO 80225, OR RESTON, VIRGINIA 22092  
A FOLDER DESCRIBING TOPOGRAPHIC MAPS AND SYMBOLS IS AVAILABLE ON REQUEST

Revisions shown in purple compiled from aerial photographs taken 1990 and other source data. This information not field checked. Map edited 1983

Purple tint indicates extension of urban areas

1970  
PHOTOREVISED 1983  
DMA 3054 II SW-SERIES V896

SEE NEVADA FOR OLDER MAP