

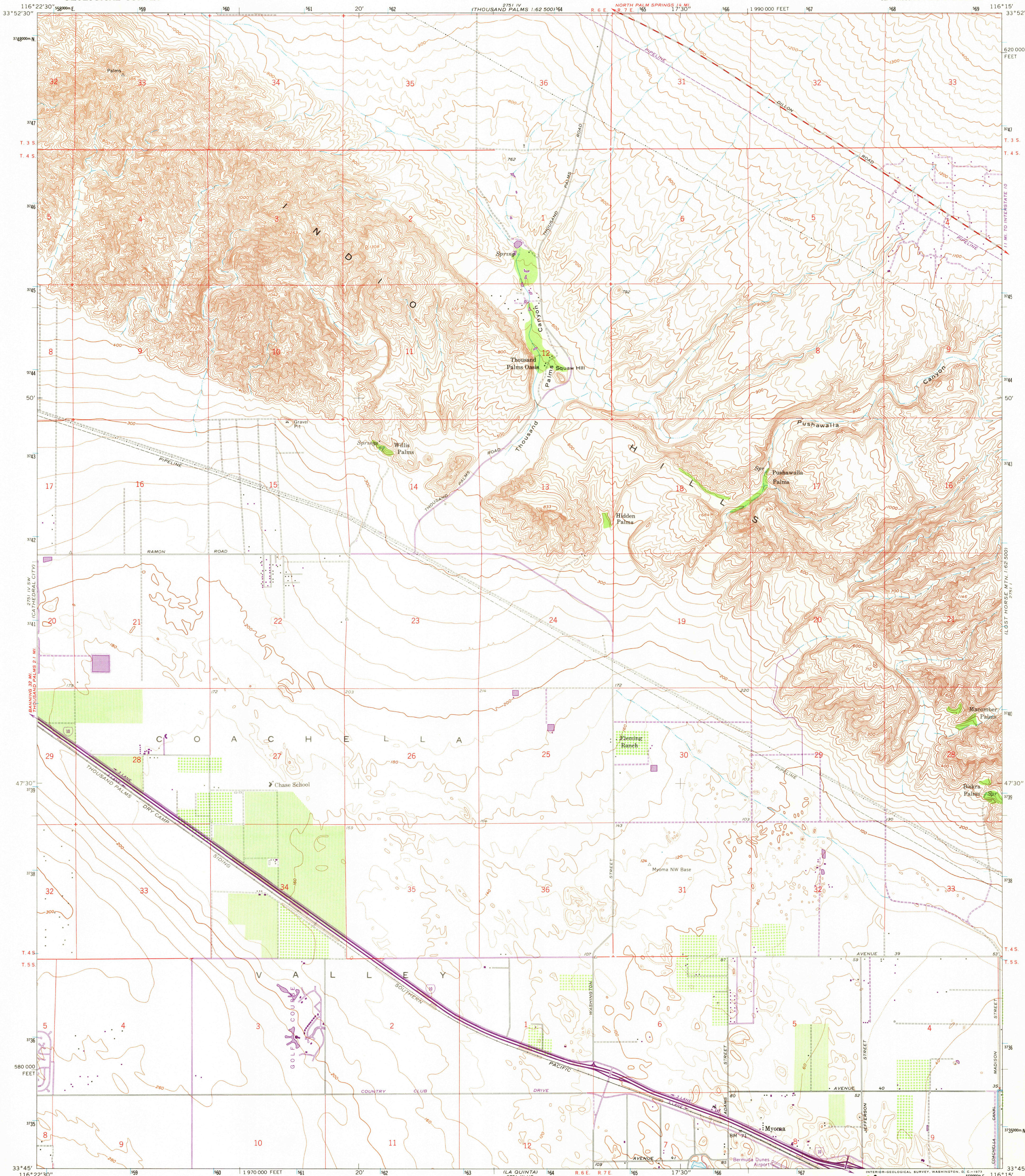
7251 IV NW
SEVEN PALMS
VALLEY

UNITED STATES
DEPARTMENT OF THE INTERIOR
GEOLOGICAL SURVEY

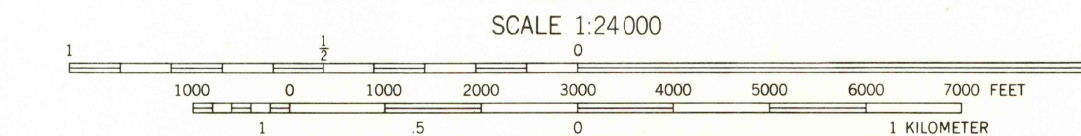
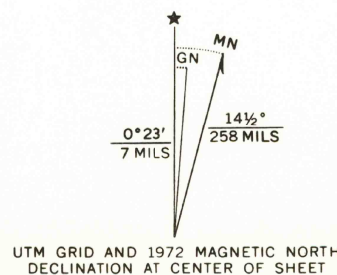
STATE OF CALIFORNIA
DEPARTMENT OF WATER RESOURCES

MYOMA QUADRANGLE
CALIFORNIA—RIVERSIDE CO.
7.5 MINUTE SERIES (TOPOGRAPHIC)
SE/4 THOUSAND PALMS 15' QUADRANGLE

7251 I
LOST HORSE MTN.
1:62 500



Mapped, edited, and published by the Geological Survey
Control by USGS, USC&GS, USCE, U.S. Bureau of Reclamation and Metropolitan Water District
Topography from aerial photographs by ER-55 plotter
Aerial photographs taken 1956. Field check 1958
Polyconic projection. 1927 North American datum
10,000-foot grid based on California coordinate system, zone 6
1000-meter Universal Transverse Mercator grid ticks, zone 11, shown in blue
Unchecked elevations are shown in brown
Revisions shown in purple compiled from aerial photographs taken 1972. This information not field checked



THIS MAP COMPLIES WITH NATIONAL MAP ACCURACY STANDARDS
FOR SALE BY U. S. GEOLOGICAL SURVEY, DENVER, COLORADO 80225, OR WASHINGTON, D. C. 20242
A FOLDER DESCRIBING TOPOGRAPHIC MAPS AND SYMBOLS IS AVAILABLE ON REQUEST



ROAD CLASSIFICATION	
Heavy-duty	Light-duty
Medium-duty	Unimproved dirt
Interstate Route	

USGS
Microfilm File
Topographic Data

JUL 30 1973
MYOMA, CALIF.
SE/4 THOUSAND PALMS 15' QUADRANGLE
N3345—W11615/7.5
1958
PHOTOREVISED 1972
AMS 2751 IV SE—SERIES V895

4575