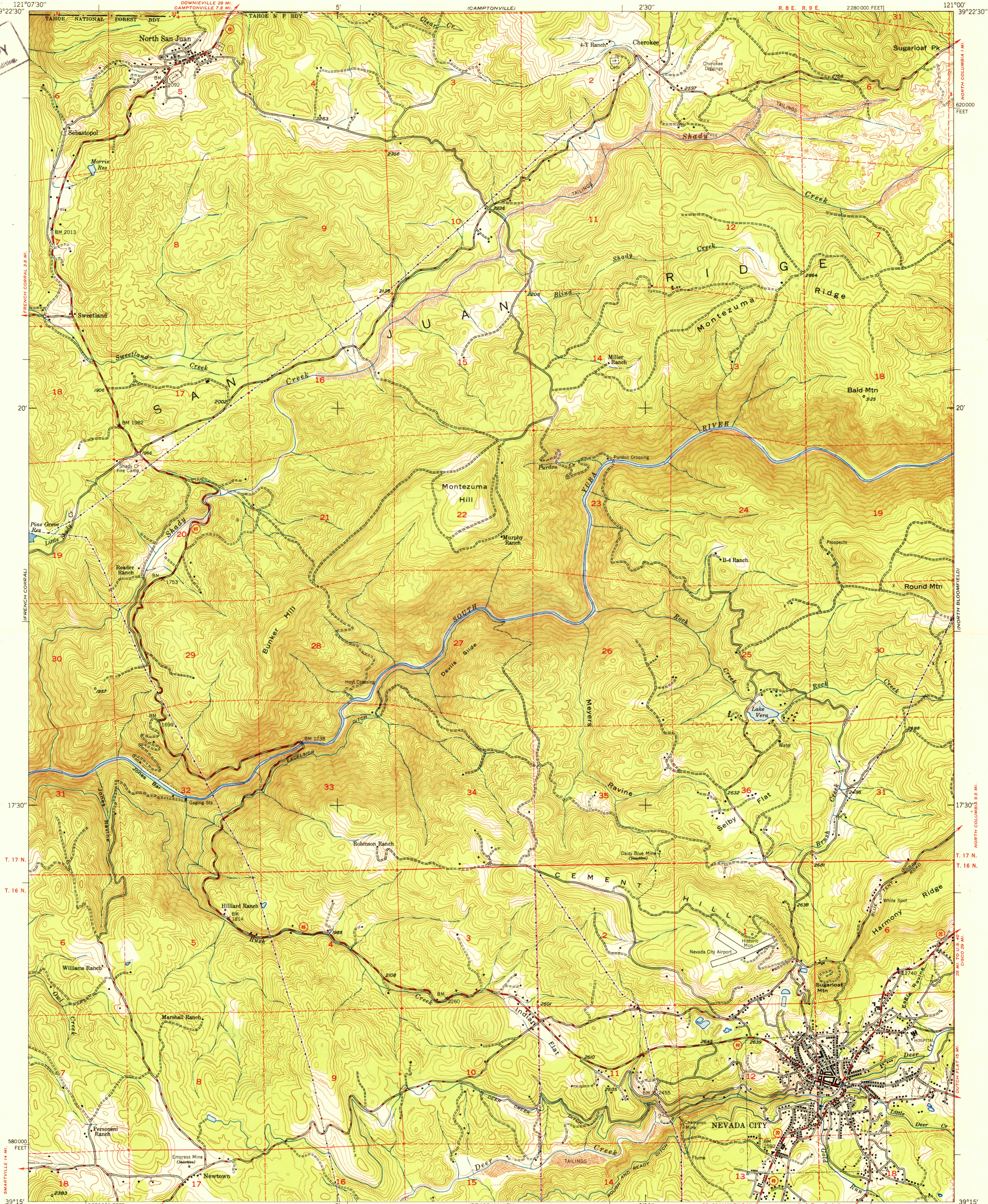


U. S. G. S.  
FILE COPY  
Inspection and Editing



Maped by Fairchild Aerial Surveys, Inc.  
Field inspected, edited, and published by the Geological Survey  
Control by Fairchild Aerial Surveys, Inc.,  
USGS, and USC&GS  
Topography from aerial photographs by stereoplanigraph methods  
Aerial photographs taken 1946-1947. Field check 1948  
Polyconic projection. 1927 North American datum  
10,000-foot grid based on California coordinate system,  
zone 2  
Dashed land lines indicate approximate location  
Fairchild triangulation shown by unlabeled located object symbol

TRUE NORTH  
MAGNETIC NORTH  
APPROXIMATE MEAN  
DECLINATION, 1948

SCALE 1:24000  
1 2 3 4 5 6 7 8 9 10 11 12 13 14 15 16 17 18 19 20 21 22 23 24 25 26 27 28 29 30 31 32 33 34 35 36 37 38 39 40 41 42 43 44 45 46 47 48 49 50 51 52 53 54 55 56 57 58 59 60 61 62 63 64 65 66 67 68 69 70 71 72 73 74 75 76 77 78 79 80 81 82 83 84 85 86 87 88 89 90 91 92 93 94 95 96 97 98 99 100  
1000 0 1000 2000 3000 4000 5000 6000 7000 FEET  
1 5 10 15 20 25 30 35 40 45 50 55 60 65 70 75 80 85 90 95 100  
1 KILOMETER  
CONTOUR INTERVAL 25 FEET  
DATUM IS MEAN SEA LEVEL

USGS  
Historical File  
Topographic Division

U. S. G. S.  
FILE COPY  
Inspection and Editing

ROAD CLASSIFICATION  
HARD-SURFACE ALL WEATHER ROADS DRY WEATHER ROADS  
Heavy-duty LANE 16 LANE Improved dirt  
Medium-duty LANE 12 LANE Unimproved dirt  
Loose-surface, graded, or narrow hard-surface  
U. S. Route State Route

NEVADA CITY, CALIF.  
N3915-W12100/7.5  
EDITION OF 1950

FOR SALE BY U. S. GEOLOGICAL SURVEY, DENVER, COLORADO OR WASHINGTON 25, D. C.