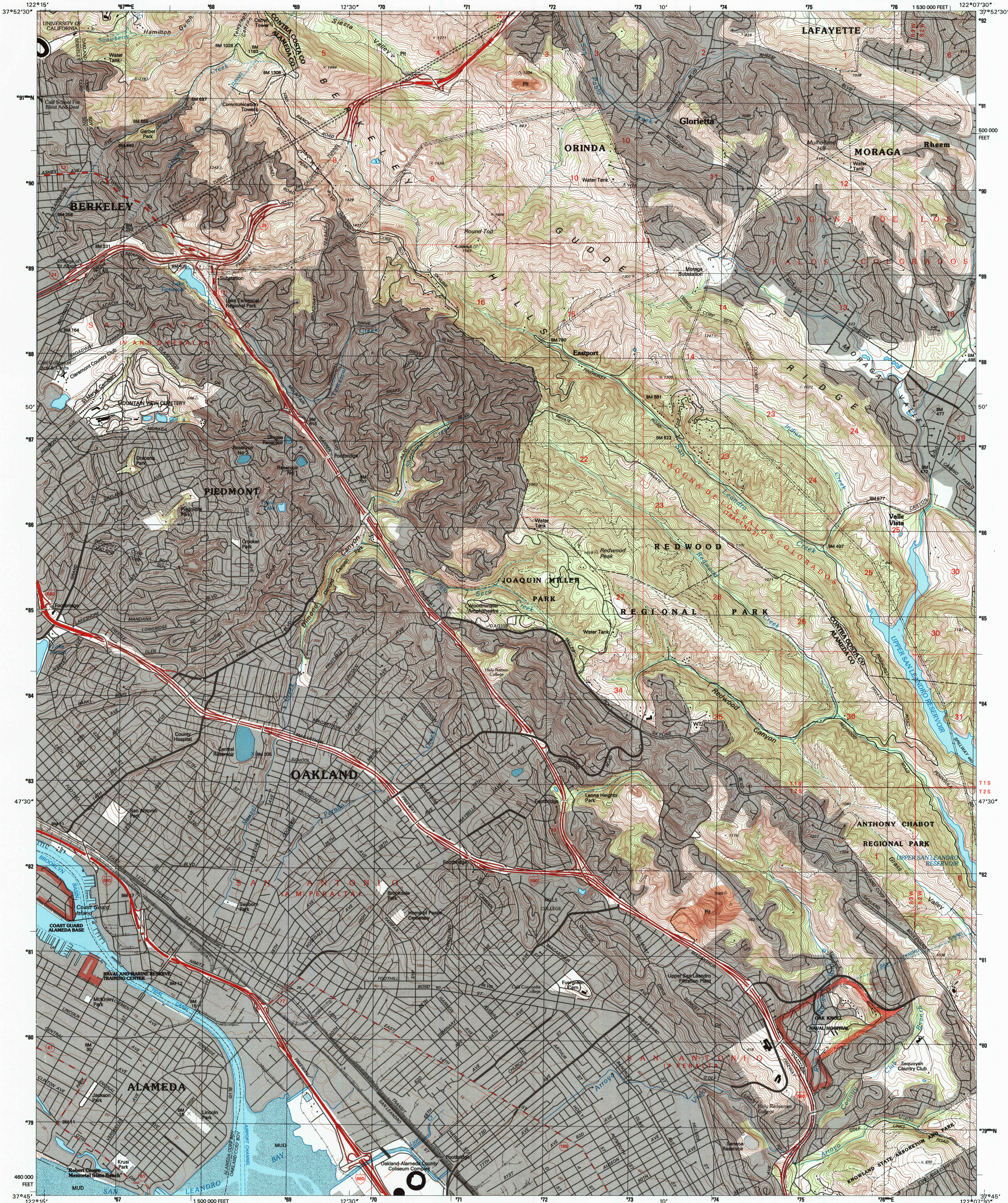
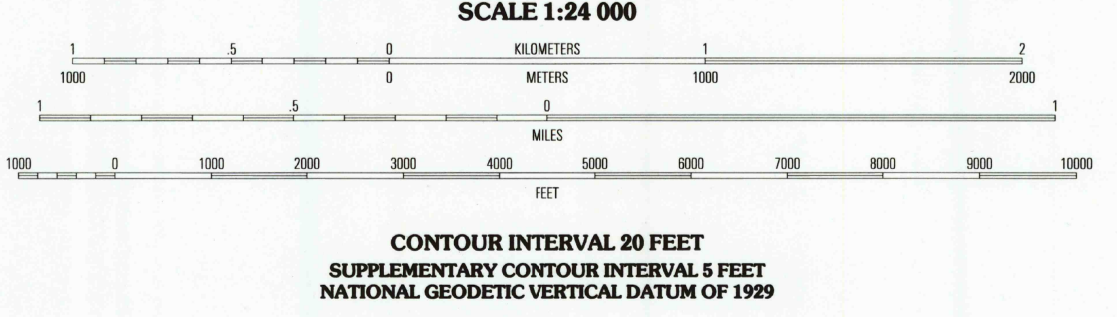
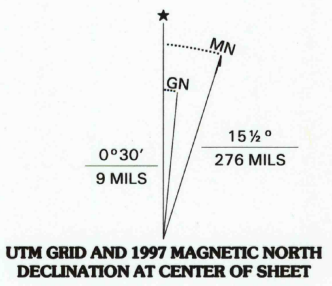


UNITED STATES
DEPARTMENT OF THE INTERIOR
GEOLOGICAL SURVEY

OAKLAND EAST QUADRANGLE
CALIFORNIA
7.5-MINUTE SERIES (TOPOGRAPHIC)



Produced by the United States Geological Survey
Compiled from imagery dated 1947. Revised from imagery dated 1993. PLSS and survey control current as of 1993. Contours and elevations current as of 1997. Map edited 1996
North American Datum of 1927 (NAD 27). Projection and 1000-meter grid: Universal Transverse Mercator, zone 10 10 000-foot ticks: California Coordinate System (zone 3)
North American Datum of 1983 (NAD 83) is shown by dashed corner ticks. The values of the shift between NAD 27 and NAD 83 for 7.5-minute intersections are obtainable from National Geodetic Survey NADCON software
There may be private inholdings within the boundaries of the National or State reservations shown on this map



QUADRANGLE LOCATION

1	2	3	1 Richmond
4	5	2 Blythe Valley	3 Walnut Creek
6	7	4 Oakland West	5 Los Trampes Ridge
8	8	6 Hunters Point	7 San Leandro
		8 Hayward	

ADJOINING 7.5' QUADRANGLE NAMES

ROAD CLASSIFICATION	
Primary highway hard surface	Light-duty road, hard or improved surface
Secondary highway hard surface	Unimproved road
Interstate Route	U.S. Route
State Route	

OAKLAND EAST, CA

1997

DMA 1559 I SW-SERIES V895

THIS MAP COMPLIES WITH NATIONAL MAP ACCURACY STANDARDS
FOR SALE BY U.S. GEOLOGICAL SURVEY, P.O. BOX 25286, DENVER, COLORADO 80225
A FOLDER DESCRIBING TOPOGRAPHIC MAPS AND SYMBOLS IS AVAILABLE ON REQUEST

