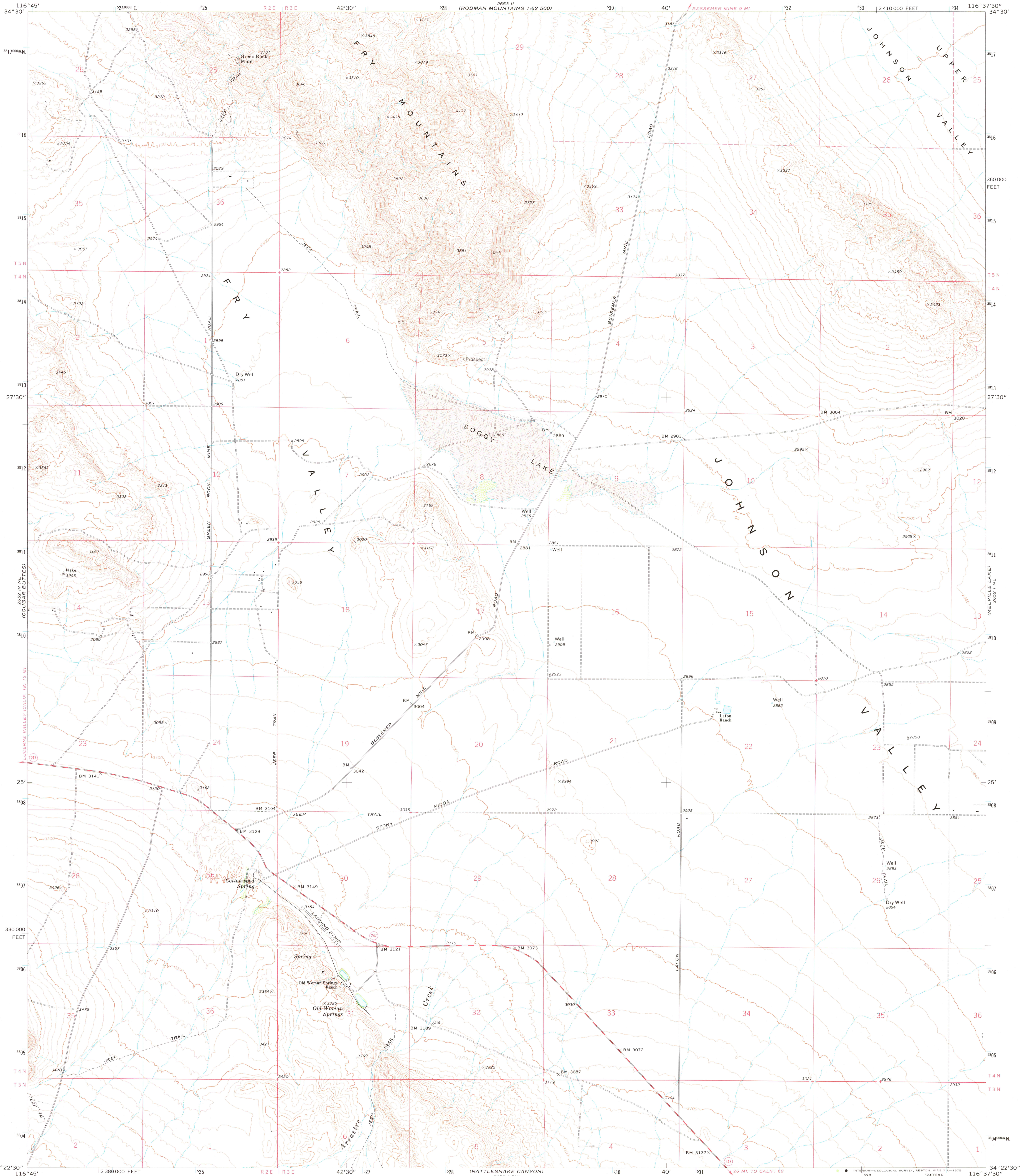


2652 II  
1:62 500  
ROD MOUNTAINS

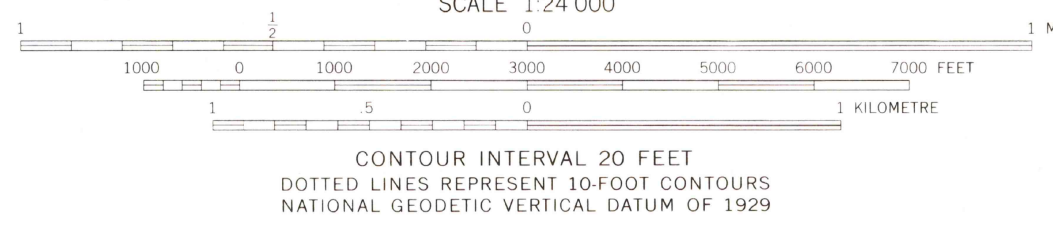
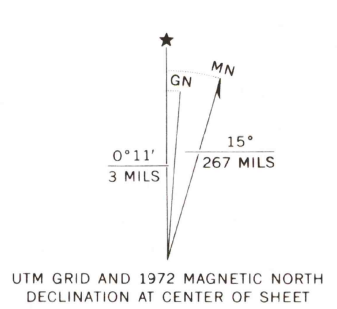
UNITED STATES  
DEPARTMENT OF THE INTERIOR  
GEOLOGICAL SURVEY

OLD WOMAN SPRINGS QUADRANGLE  
CALIFORNIA—SAN BERNARDINO CO.  
7.5 MINUTE SERIES (TOPOGRAPHIC)  
NW 1/4 OLD WOMAN SPRINGS 15' QUADRANGLE

2652 II  
1:62 500  
ROD MOUNTAINS



Mapped, edited, and published by the Geological Survey  
in cooperation with California Department of Water Resources  
Control by USGS and NOS/NOAA  
Topography by photogrammetric methods from aerial  
photographs taken 1970. Field checked 1972  
Projection and 10,000-foot grid ticks: California coordinate  
system, zone 5 (Lambert conformal conic)  
1000 metre Universal Transverse Mercator grid ticks,  
zone 11, shown in blue. 1927 North American datum  
Where omitted, land lines have not been established



USGS  
HISTORICAL FILE  
TOPOGRAPHIC DIVISION

OLD WOMAN SPRINGS, CALIF.  
NW 1/4 OLD WOMAN SPRINGS 15' QUADRANGLE  
N3422.5—W11637.5/7.5

THIS MAP COMPLIES WITH NATIONAL MAP ACCURACY STANDARDS  
FOR SALE BY U. S. GEOLOGICAL SURVEY, DENVER, COLORADO 80225 OR RESTON, VIRGINIA 22092  
A FOLDER DESCRIBING TOPOGRAPHIC MAPS AND SYMBOLS IS AVAILABLE ON REQUEST