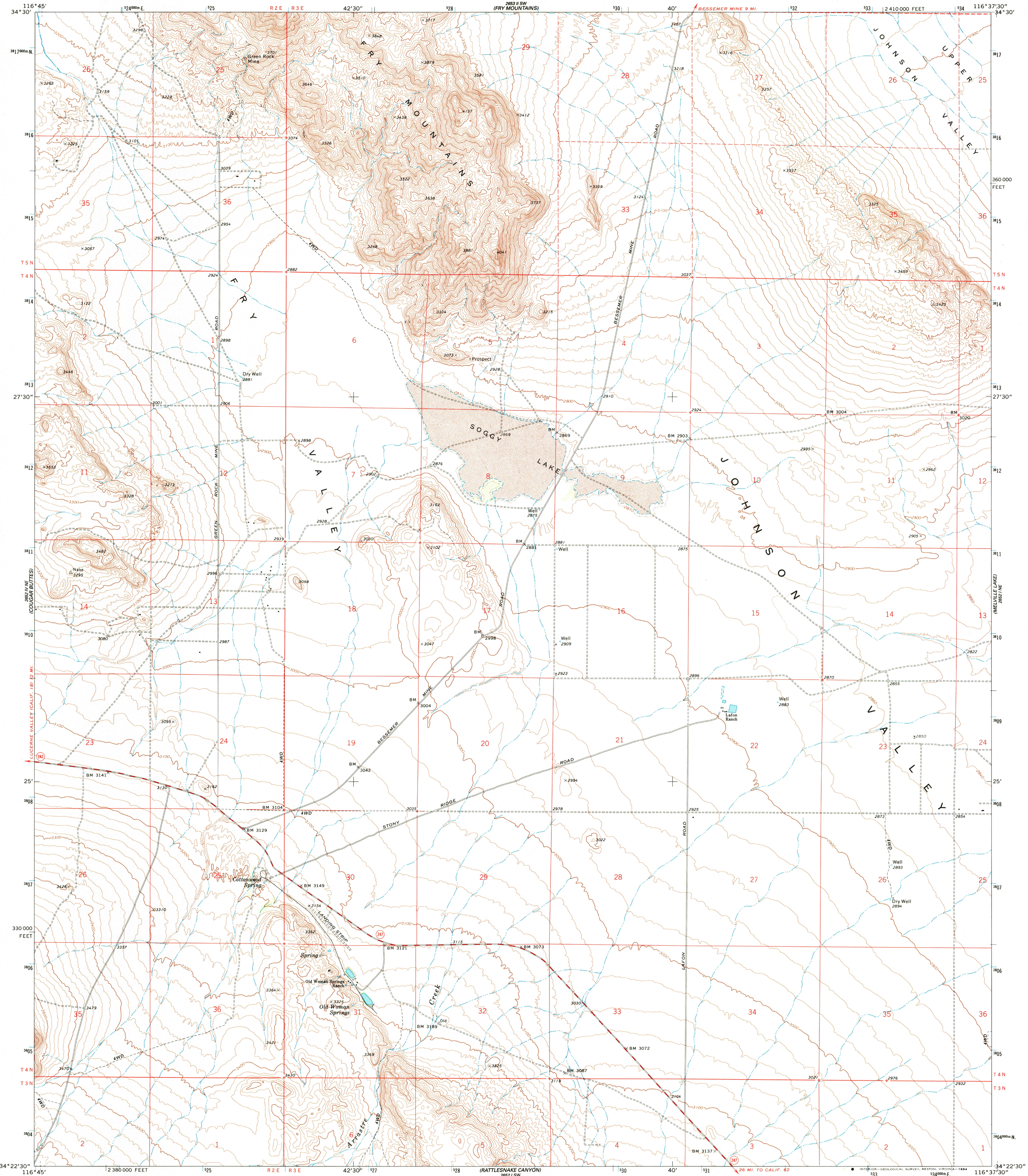


(GRAND TEST MINE)

UNITED STATES  
DEPARTMENT OF THE INTERIOR  
GEOLOGICAL SURVEY

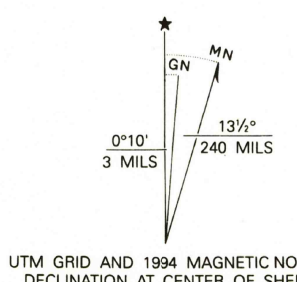
OLD WOMAN SPRINGS QUADRANGLE  
CALIFORNIA-SAN BERNARDINO CO.  
7.5 MINUTE SERIES (TOPOGRAPHIC)

(BONNIE CANYON)

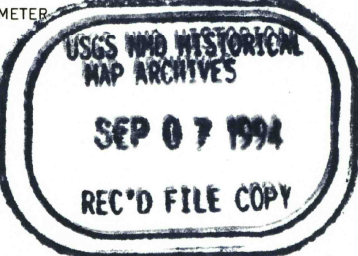


(BIG BEAR CITY)

Produced by the United States Geological Survey  
Control by USGS and NOS/NOAA  
Compiled from aerial photographs taken 1970. Field checked 1972  
North American Datum of 1927 (NAD 27). Projection and  
10000-foot ticks: California Coordinate System, zone 5  
(Lambert Conformal Conic)  
Blue 1000-meter Universal Transverse Mercator ticks, zone 11  
North American Datum of 1983 (NAD 83) is shown by dashed  
corner ticks. The values of the shift between NAD 27 and NAD 83  
for 7.5-minute intersections are obtainable from National Geodetic  
Survey NADCON software  
Where omitted, land lines have not been established  
Photospected from 1989 source; no major culture  
or drainage changes observed. Names verified 1994



SCALE 1:24 000  
1 000 0 1000 2000 3000 4000 5000 6000 7000 FEET  
1 5 10 KILOMETERS  
CONTOUR INTERVAL 20 FEET  
DOTTED LINES REPRESENT 10-FOOT CONTOURS  
NATIONAL GEODETIC VERTICAL DATUM OF 1929  
THIS MAP COMPLIES WITH NATIONAL MAP ACCURACY STANDARDS  
FOR SALE BY U.S. GEOLOGICAL SURVEY  
DENVER, COLORADO 80225, OR RESTON, VIRGINIA 22092  
A FOLDER DESCRIBING TOPOGRAPHIC MAPS AND SYMBOLS IS AVAILABLE ON REQUEST



ROAD CLASSIFICATION  
Primary highway, hard surface ——— Light-duty road, hard or improved surface ———  
Secondary highway, hard surface ——— Unimproved road ———  
○ Interstate Route ○ U. S. Route ○ State Route  
OLD WOMAN SPRINGS, CA  
34116-D6-TF-024  
1972  
MINOR REVISION 1994  
DMA 2652 1 NW-SERIES V895

(BONNIE CANYON)