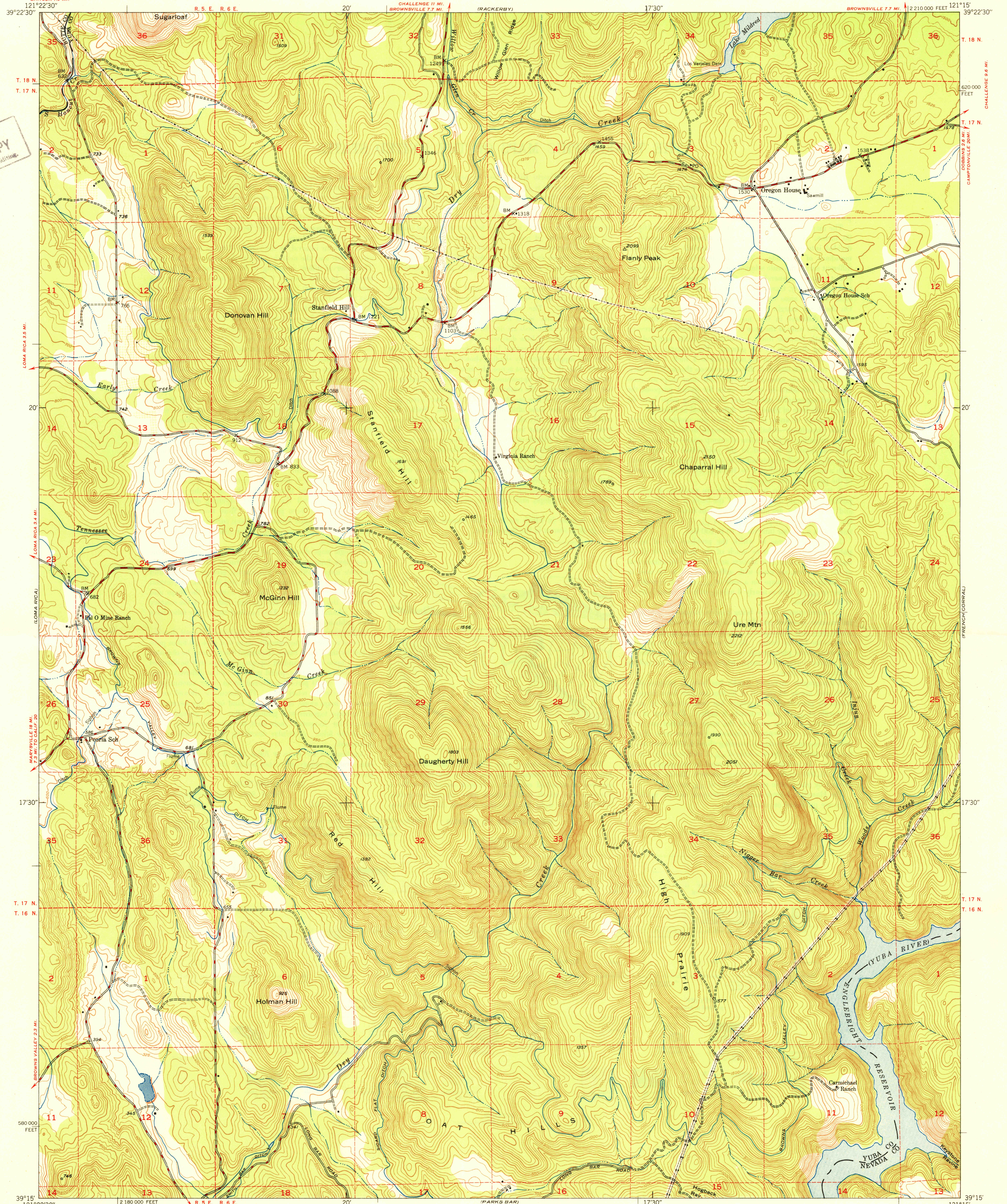
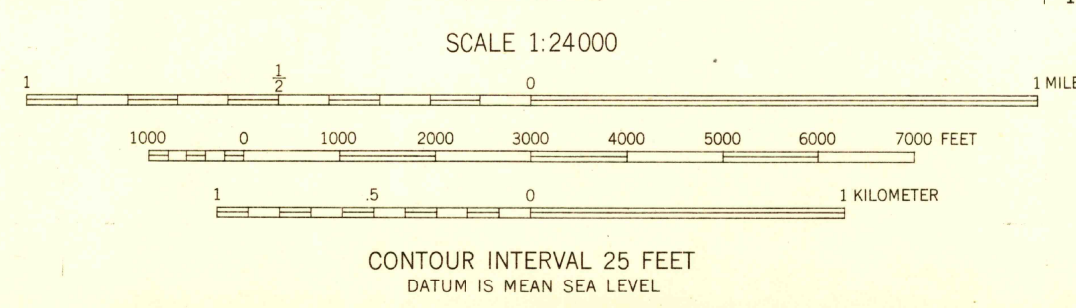
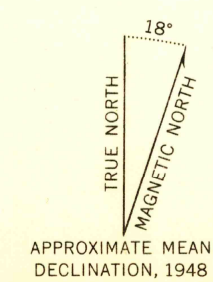


U. S. G. S.  
FILE COPY  
Inspection and Editing



Mapped by Fairchild Aerial Surveys, Inc.  
Field inspected, edited, and published by the Geological Survey  
Control by Fairchild Aerial Surveys, Inc.,  
USGS, and USC&GS  
Topography from aerial photographs by stereoplanograph methods  
Aerial photographs taken 1946-1947. Field check 1948  
Polyconic projection. 1927 North American datum  
10,000-foot grid based on California coordinate system,  
zone 2  
Dashed land lines indicate approximate location  
Fairchild triangulation shown by unlabeled located object symbol



USGS  
Historical File  
Topographic Division

ROAD CLASSIFICATION	
HARD-SURFACE ALL WEATHER ROADS	DRY WEATHER ROADS
Heavy-duty <u>4 LANE 18' LANE</u>	Improved dirt
Medium-duty <u>4 LANE 18' LANE</u>	Unimproved dirt
Loose-surface, graded, or narrow hard-surface	
<input checked="" type="checkbox"/> U. S. Route	<input type="checkbox"/> State Route

U. S. G. S.  
FILE COPY  
Inspection and Editing

OREGON HOUSE, CALIF.  
SE/4 BANGOR 15' QUADRANGLE  
N3915-W12115/7.5  
EDITION OF 1950