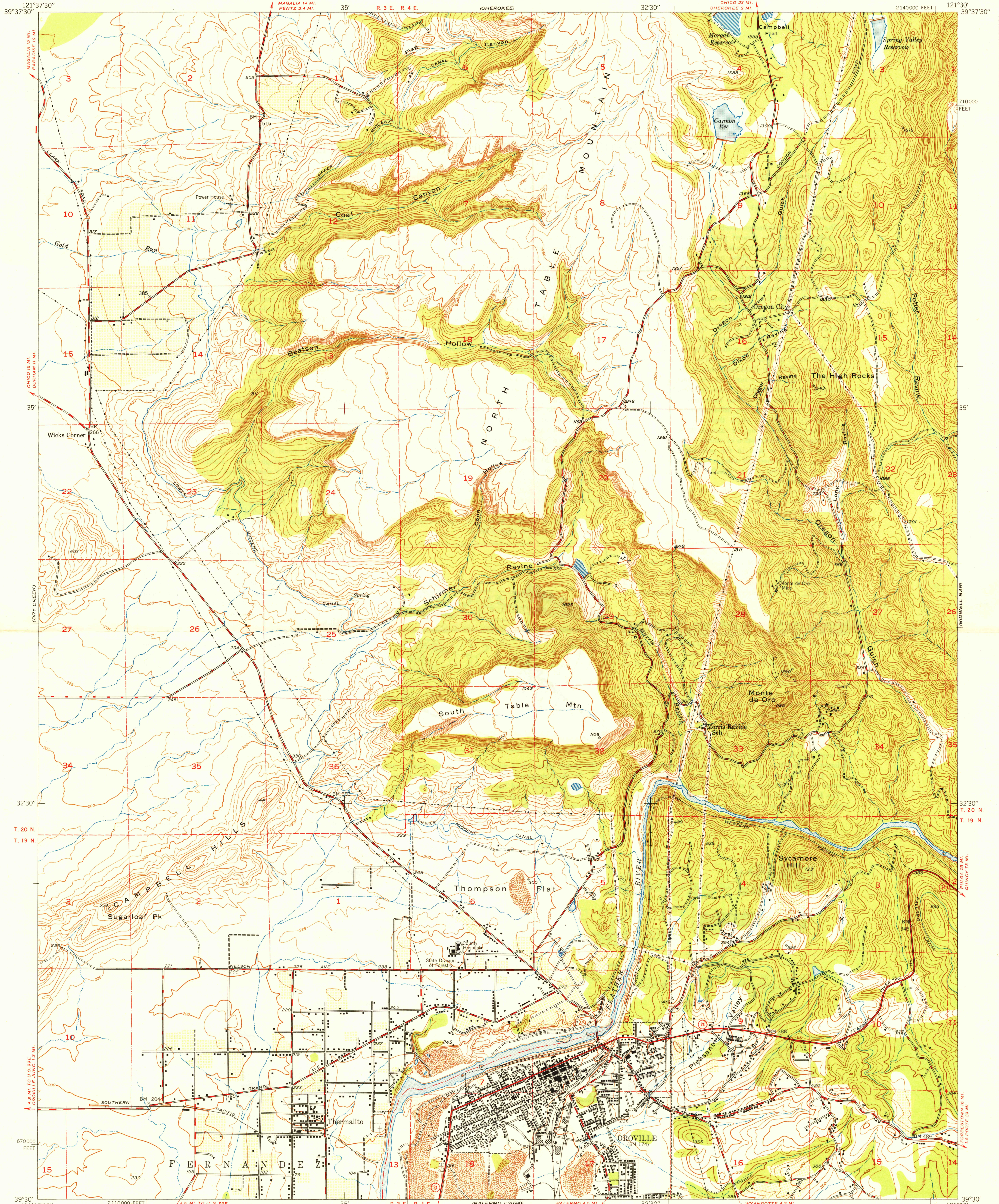


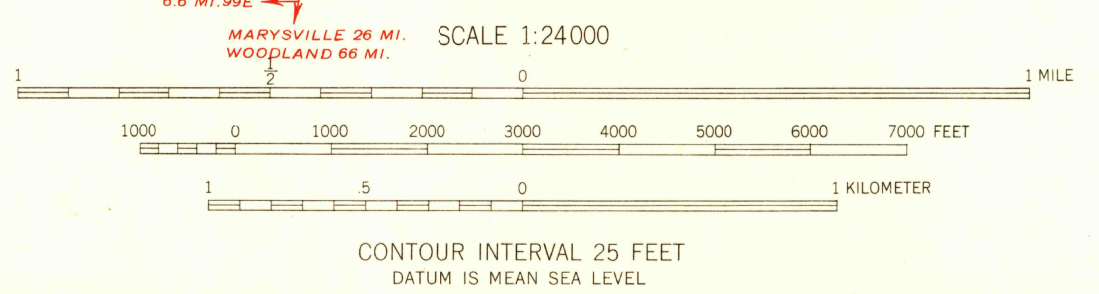
U.S.G.S.  
FILE COPY  
Inspection and Editing

U.S.G.S.  
FILE COPY  
Inspection and Editing



Mapped by Fairchild Aerial Surveys, Inc.  
Field inspected, edited, and published by the Geological Survey  
Control by Fairchild Aerial Surveys, Inc.,  
USGS, and USC&GS  
Topography from aerial photographs by stereoplanigraph methods  
Aerial photographs taken 1946-1947. Field check 1947  
Polyconic projection. 1927 North American datum  
10,000-foot grid based on California coordinate system,  
zone 2  
Dashed land lines indicate approximate location  
Fairchild triangulation shown by unlabeled located object symbol

TRUE NORTH  
MAGNETIC NORTH  
APPROXIMATE MEAN  
DECLINATION, 1947



USCS  
Historical File  
Topographic Division

ROAD CLASSIFICATION  
HARD-SURFACE ALL WEATHER ROADS DRY WEATHER ROADS  
Heavy-duty 4 LANE LANE Improved dirt  
Medium-duty 4 LANE LANE Unimproved dirt  
Loose-surface, graded, or narrow hard-surface  
U. S. Route State Route

WOODLAND  
Woods Brushwood  
Orchard

OROVILLE, CALIF.  
N3930-W12130/7.5  
EDITION OF 1949

U.S.G.S.  
FILE COPY  
Inspection and Editing